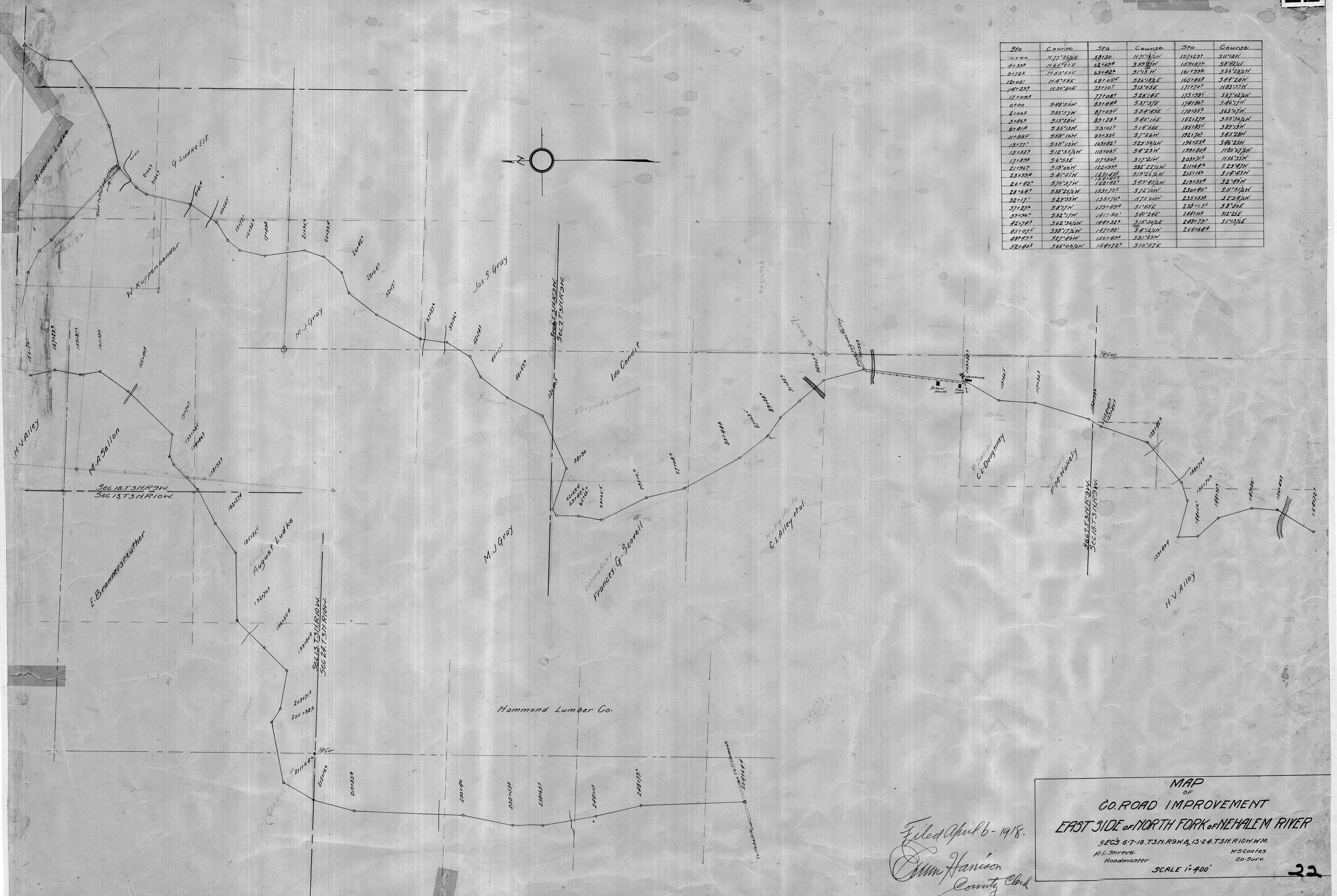
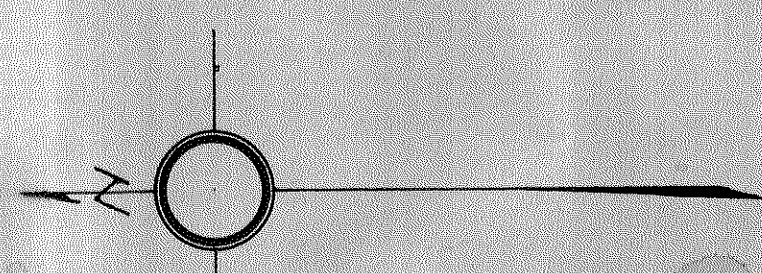


Sta	Course	Sta	Course	Sta	Course
0+00	N 77° 25' E	58+30	N 71° 17' W	157+22	S 11° 18' N
2+33	N 65° 45' E	62+82	S 53° 57' W	159+87	S 8° 24' E
8+22	N 53° 53' E	63+22	S 1° 15' W	161+99	S 36° 30' W
12+03	N 4° 58' E	68+05	S 28° 18' E	165+86	S 24° 28' W
14+29	N 30° 30' E	71+10	S 13° 05' E	171+70	N 83° 53' W
17+03	S 46° 56' W	77+08	S 28° 18' E	175+98	S 67° 02' W
0+00	S 46° 56' W	83+48	S 31° 57' E	179+06	S 46° 17' W
2+62	S 33° 57' W	87+02	S 54° 42' E	179+35	S 63° 07' W
3+82	S 13° 28' W	89+28	S 40° 10' E	182+87	S 53° 36' W
8+14	S 35° 18' W	92+02	S 14° 38' E	185+85	S 82° 13' W
11+55	S 58° 16' W	99+52	S 7° 26' W	192+70	S 45° 23' W
13+77	S 38° 13' W	103+82	S 22° 56' W	196+58	S 46° 23' W
15+37	S 12° 55' W	113+65	S 9° 25' W	199+84	N 80° 07' W
17+83	S 6° 53' E	117+50	S 17° 21' W	205+71	N 56° 35' W
21+92	S 19° 00' W	122+92	S 2° 27' W	211+66	S 29° 27' W
23+22	S 41° 41' W	124+92	S 19° 20' W	215+16	S 18° 43' W
26+22	S 70° 57' W	128+42	S 42° 49' W	219+35	S 2° 49' W
28+67	S 38° 25' W	133+75	S 72° 10' W	230+40	S 11° 51' W
32+17	S 29° 53' W	135+70	N 75° 00' W	235+53	S 2° 39' W
37+27	S 8° 17' W	139+29	S 1° 45' E	238+65	S 8° 50' E
39+56	S 32° 17' W	141+50	S 41° 26' E	244+00	S 12° 25' E
42+72	S 62° 36' W	144+32	S 15° 30' E	248+79	S 1° 13' E
45+07	S 38° 17' W	147+88	S 4° 12' W	254+62	
48+29	S 27° 46' W	150+42	S 31° 23' W		
52+40	S 68° 06' W	154+22	S 10° 57' E		



Filed April 6 - 1918.
 Wm. Harrison
 County Clerk

MAP
 OF
 CO. ROAD IMPROVEMENT
 EAST SIDE OF NORTH FORK OF NEHALEM RIVER
 SEC'S 6-7-18-T31R9N & 13-24-T31R10W-W.M.
 R.L. Shreve. H.S. Coates
 Roadmaster Co-Surv.
 SCALE 1"=400'