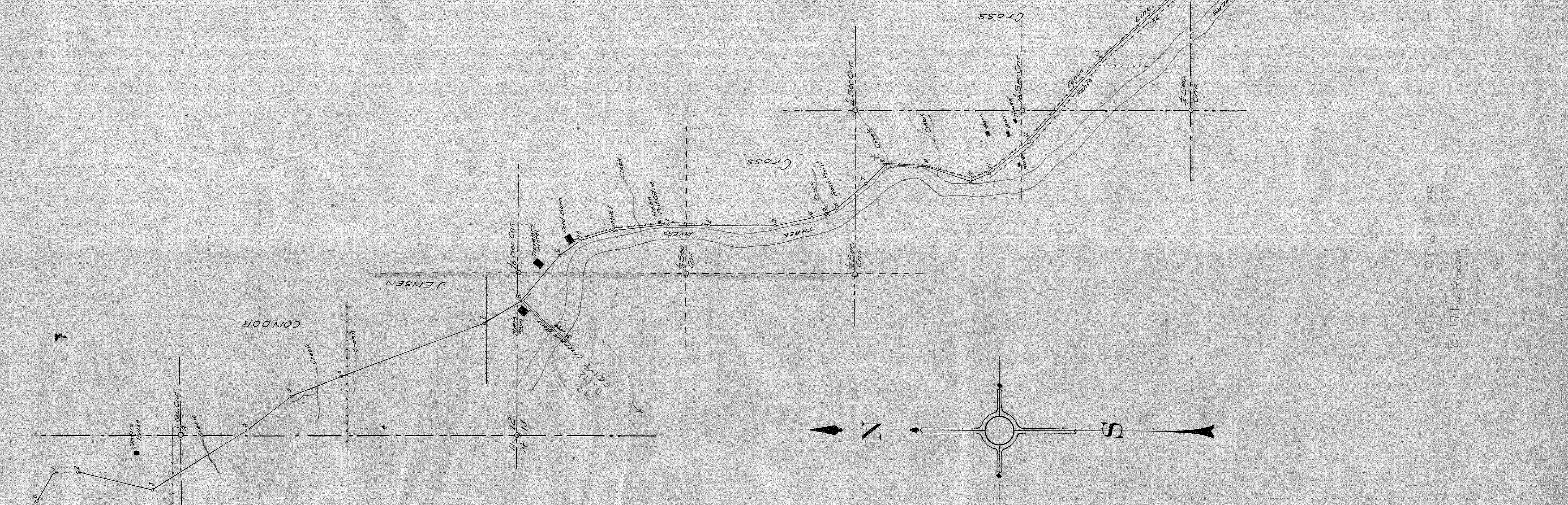


MAP
OF
E.E. CROSS COUNTY ROAD
ALONG THREE RIVERS
SECS. 12-13, 14, 31, 10W
TILLAMOOK COUNTY

SCALE 1"=400'
L.G. Jackson Co Surv. Dec. 1911

SHEET 192 OF 1

Station	Angle	Course	Station	Angle	Course
2145.1	1	S 89° 24' W	2015.0	6	S 10° 54' E
4148.4	2	S 87° 36' W	2314.0	7	S 64° 11' E
10149.2	3	S 77° 21' E	25150.0	8	S 2° 11' W
191410.4	4	S 77° 21' E	28143.2	9	S 18° 31' W
271420.0	5	S 21° 32' E	32145.1	10	S 22° 18' E
271430.4	6	S 20° 10' E	35145.8	11	S 34° 23' E
371431.4	7	S 30° 19' E	38143.0	12	S 48° 59' E
431422.2	8	S 49° 14' E	36143.9	13	S 41° 20' E
471495.9	9	S 16° 21' E	405140.0	14	D. &
591400.0	10	S 77° 12' E	471433.7	1	S 37° 34' E
521480.0	11	S 6° 07' E	481434.4	2	S 30° 30' E
561490.1	1	S 1° 33' W	531433.3	3	S 37° 49' E
601484.1	2	S 0° 12' E	521440.7	4	S 47° 27' E
631447.3	3	S 2° 32' E	591432.5	5	S 40° 29' E
681438.9	4	S 16° 46' E	6481420.0	6	S 37° 19' E



Notes in CTG p. 35 -
B-171 is tracing