

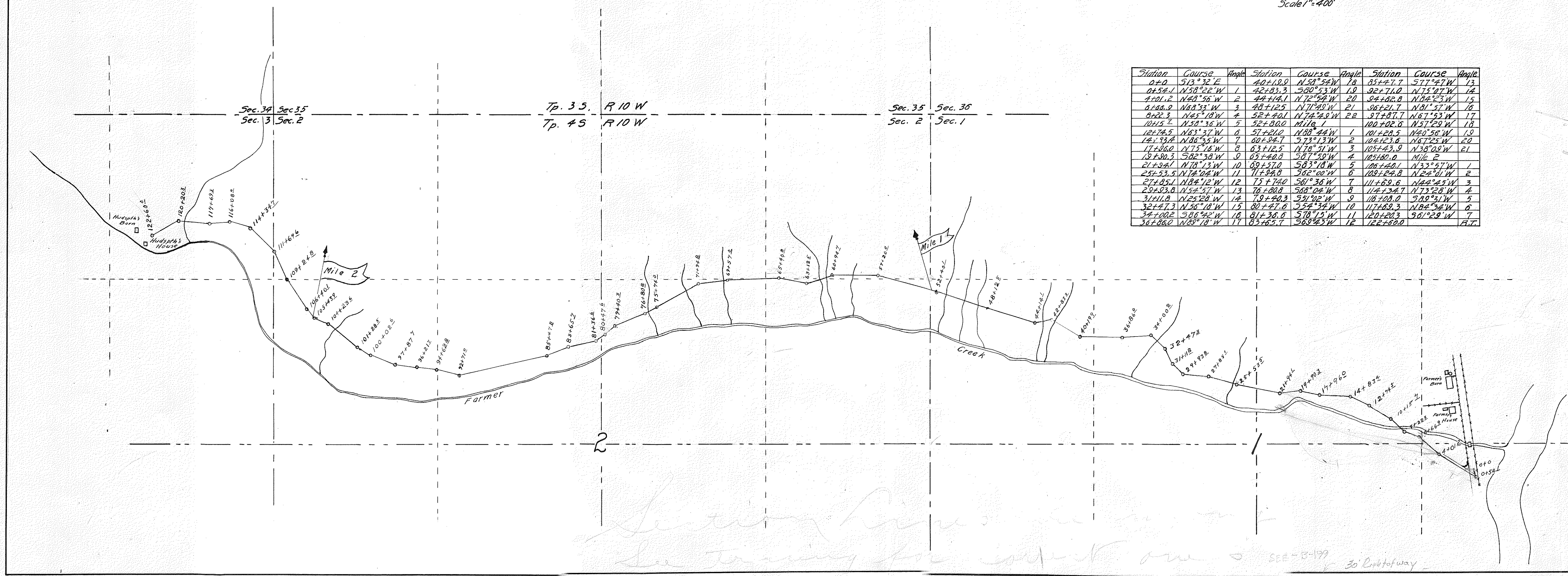
MAP OF CHILCOTT COUNTY ROAD

Secs. 1-2, Tp. 4 S, R. 10 W.

R.L. Shreve Co. Surv. May, 1916

Scale 1" = 400'

Station	Course	Angle	Station	Course	Angle	Station	Course	Angle
0+0	S13°32'E		40+10.0	N58°54'W	18	81+47.7	S77°47'W	13
0+54.1	N58°22'W	1	42+83.3	S60°53'W	19	92+71.0	N75°07'W	14
1+01.2	N42°56'W	2	44+14.1	N72°52'W	20	94+62.8	N84°23'W	15
1+08.9	N48°33'W	3	48+12.5	N71°48'W	21	96+21.7	N81°57'W	16
1+22.3	N45°18'W	4	52+40.1	N74°49'W	22	97+07.7	N67°29'W	17
1+41.5	N58°36'W	5	52+80.0	Mile 1		100+02.8	N57°29'W	18
1+74.5	N63°37'W	6	57+21.0	N88°42'W	1	101+28.5	N40°56'W	19
1+93.4	N86°35'W	7	60+94.7	S73°13'W	2	104+23.6	N67°25'W	20
1+98.0	N75°16'W	8	63+12.5	N78°51'W	3	105+43.9	N38°09'W	21
1+90.3	S82°36'W	9	65+40.8	S87°59'W	4	105+80.0	Mile 2	
21+94.1	N78°13'W	10	69+37.0	S83°18'W	5	106+40.1	N33°57'W	1
25+53.5	N74°04'W	11	71+94.8	S62°00'W	6	108+24.8	N24°01'W	2
27+85.1	N84°12'W	12	75+74.0	S61°36'W	7	111+60.6	N44°25'W	3
29+93.8	N54°57'W	13	76+80.8	S68°04'W	8	114+34.7	N73°28'W	4
31+11.8	N25°28'W	14	78+40.3	S51°02'W	9	116+09.0	S80°21'W	5
32+47.3	N56°18'W	15	80+47.6	S54°32'W	10	117+69.3	N84°32'W	6
34+00.2	S86°42'W	16	81+36.6	S78°15'W	11	120+20.3	S61°29'W	7
36+86.0	N89°18'W	17	83+65.7	S60°43'W	12	122+60.0	A.T.	



Section line
See survey for report on

SEE-B-199
30' Right of Way
SEE PLAN SECTION
BOOK 110 PAGE 266