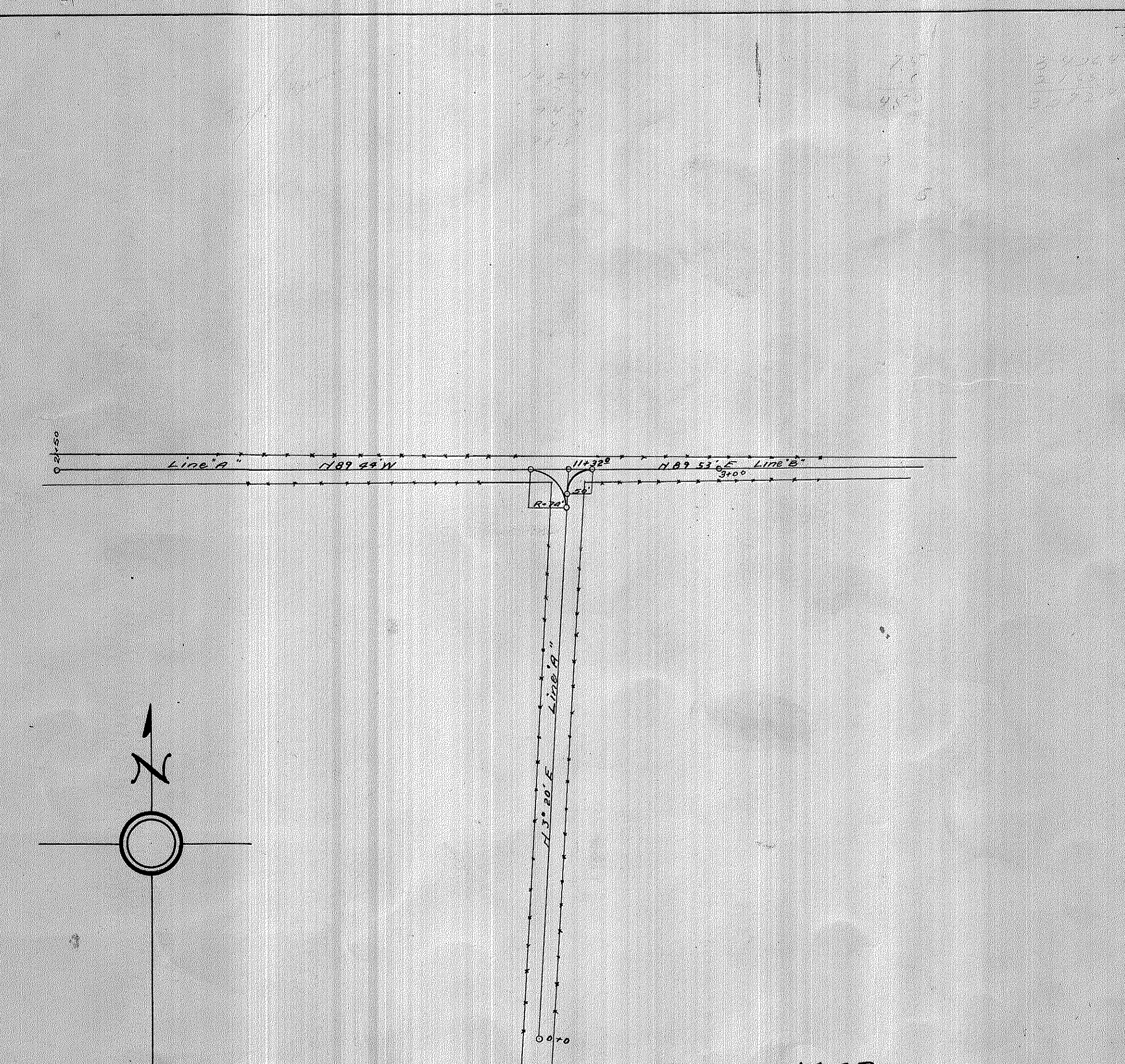
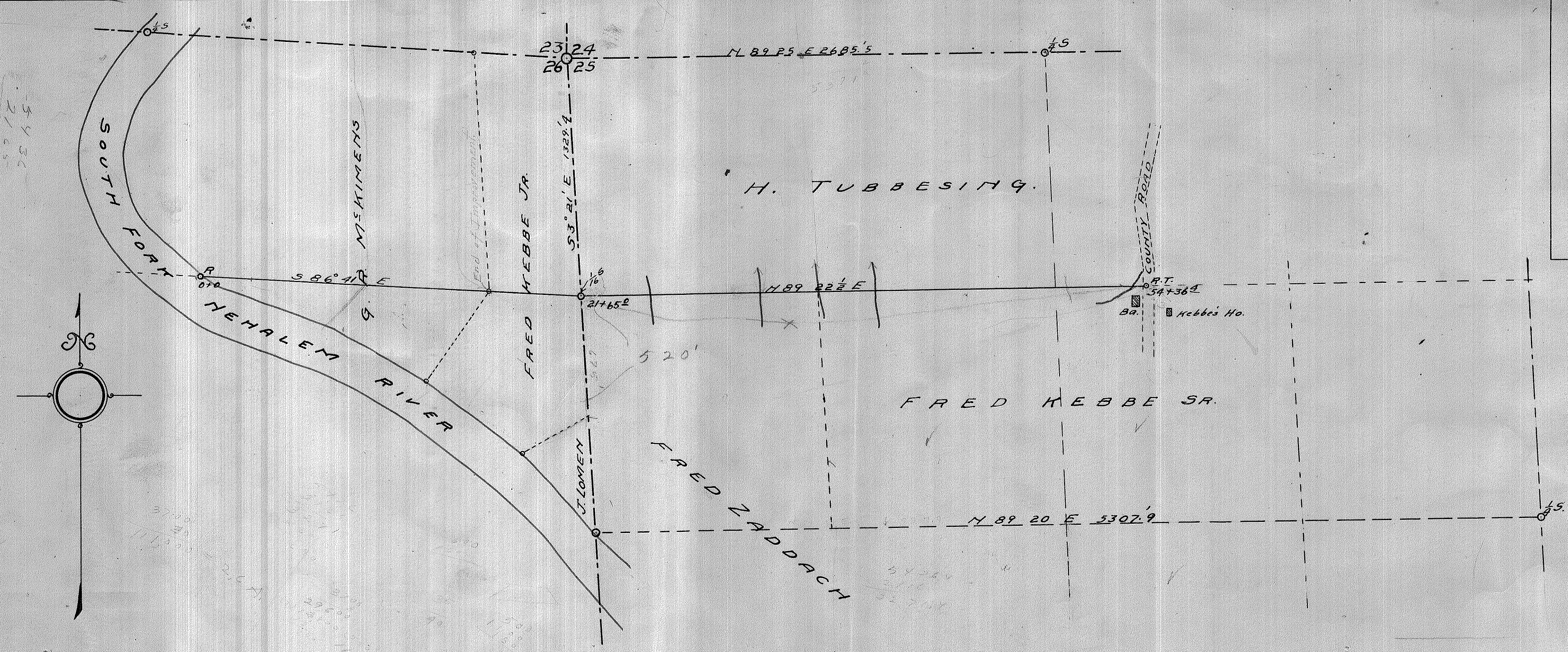
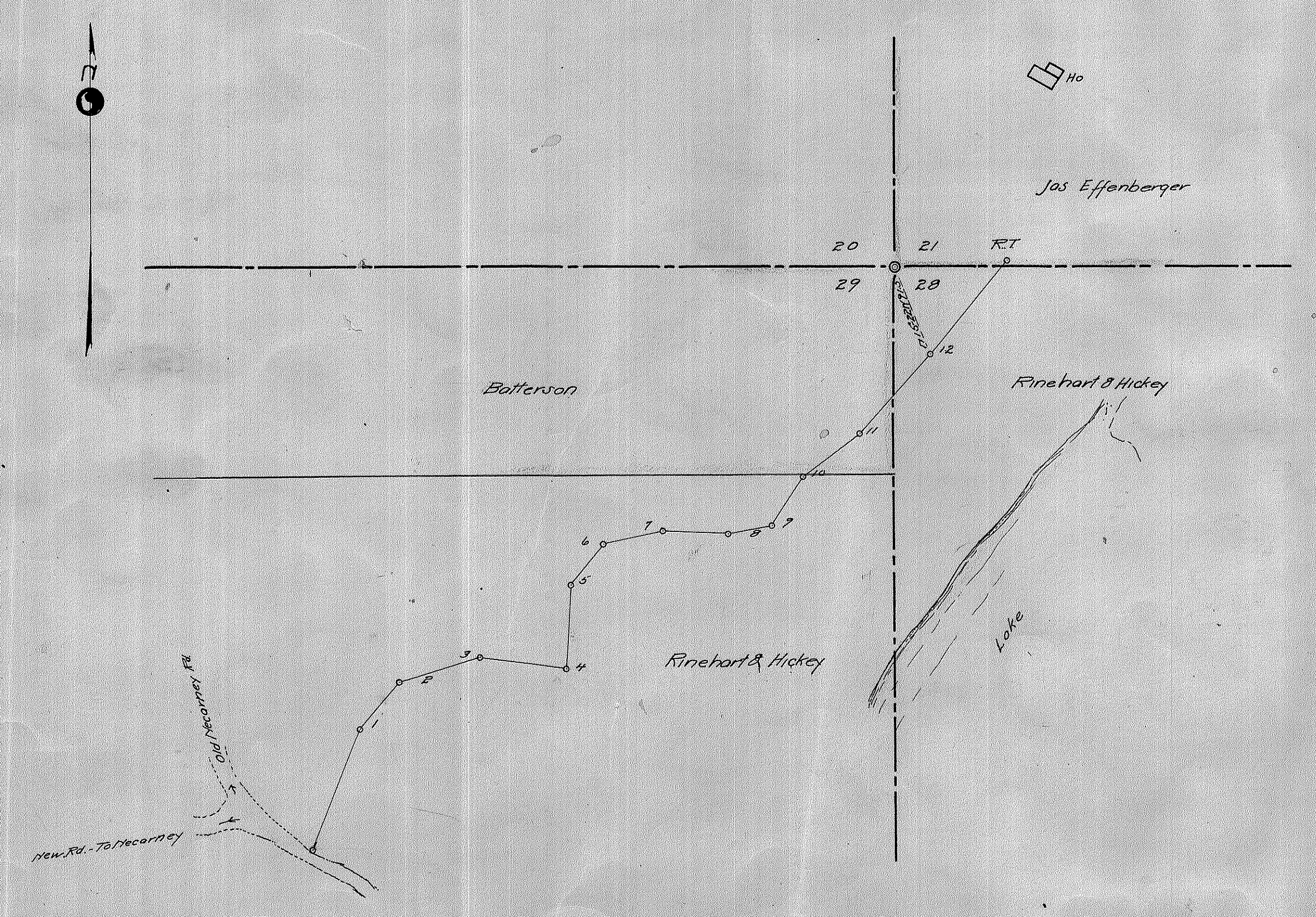


MAP OF  
 G. R. MEKIMENS CO. ROAD  
 SECS 26 25, T. 31 N, R. 10 W, W. M.  
 TILLAMOOK CO. OREGON  
 Scale 1"=400' March 1913  
 U.G. Jackson Co Sur.



MAP OF  
 GO ROAD at QUICK HILL  
 SEC 16, T. 25 S, R. 9 W.  
 U.G. Jackson Co Sur. April 1913  
 Scale 1"=200'

FIELD NOTES - CT 15 R. 113  
 See B-204



101	113	113
102	114	114
103	115	115
104	116	116
105	117	117
106	118	118
107	119	119
108	120	120
109	121	121
110	122	122
111	123	123
112	124	124

MAP OF  
 JAS EFFENBERGER CO ROAD  
 SEC 20 27, T. 31 N, R. 10 W  
 H.S. Coates Co Eng. July 1922  
 Scale 1"=100'  
 REFER TO BK 32, P. 54  
 FOR FIELD NOTES