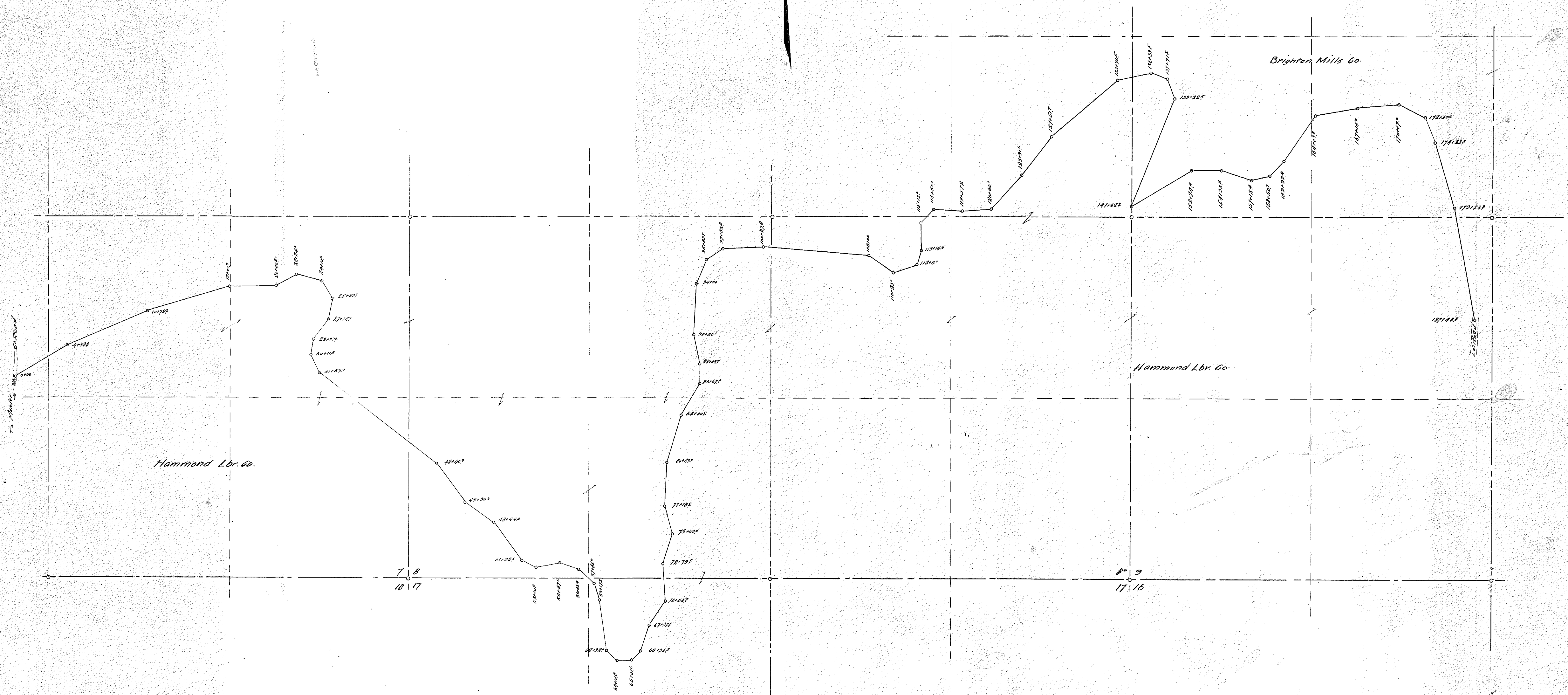
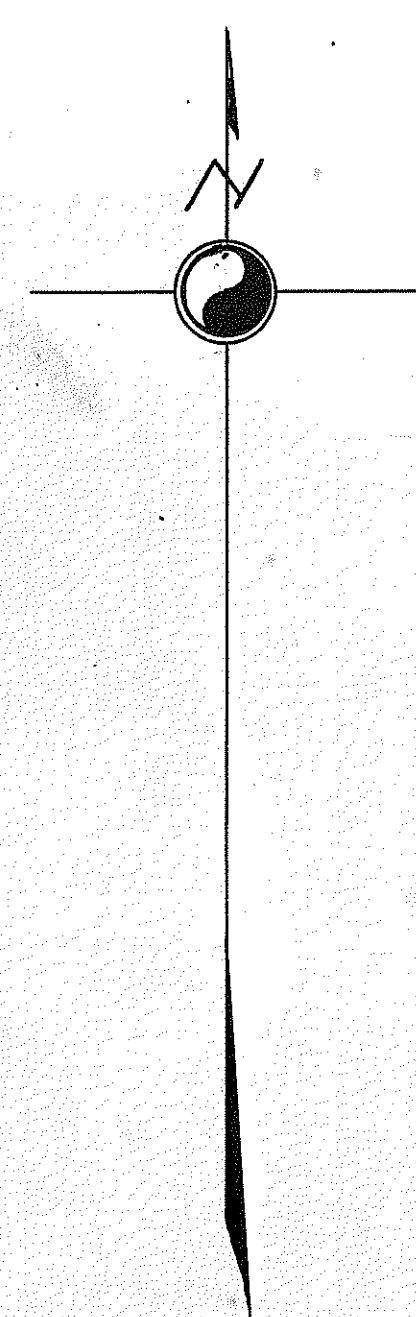


Sta	Course	Sta	Course	Sta	Course
0+00	N68°38'E	6+00.8	N86°16'E	11+50.2	S87°24'E
1+58.8	N68°56'E	6+50.6	N86°34'E	11+50.2	N87°16'E
10+78.2	N78°54'E	6+51.5	N86°52'E	11+50.2	N87°08'E
12+00.2	N88°54'E	6+52.5	N87°10'E	11+50.2	N87°00'E
20+04.3	N88°54'E	7+04.7	N87°28'E	11+50.2	N86°52'E
28+28.2	S78°54'E	7+05.5	N87°46'E	11+50.2	N86°44'E
34+10.0	S88°54'E	7+06.5	N88°04'E	11+50.2	N86°36'E
45+49.7	S108°54'E	7+07.5	N88°22'E	11+50.2	N86°28'E
57+12.7	S88°54'E	7+08.5	N88°40'E	11+50.2	N86°20'E
20+27.6	S28°54'E	7+09.5	N88°58'E	11+50.2	N86°12'E
30+11.8	S88°54'E	7+10.5	N89°16'E	11+50.2	N86°04'E
31+57.9	S88°54'E	7+11.5	N89°34'E	11+50.2	N85°56'E
44+50.0	S88°54'E	7+12.5	N89°52'E	11+50.2	N85°48'E
45+00.0	S88°54'E	7+13.5	N90°10'E	11+50.2	N85°40'E
48+44.3	S88°54'E	7+14.5	N90°28'E	11+50.2	N85°32'E
51+20.3	S88°54'E	7+15.5	N90°46'E	11+50.2	N85°24'E
58+16.8	N18°54'E	7+16.5	N91°04'E	11+50.2	N85°16'E
54+10.5	S78°54'E	7+17.5	N91°22'E	11+50.2	N85°08'E
54+58.4	S88°54'E	7+18.5	N91°40'E	11+50.2	N85°00'E
57+40.9	S28°54'E	7+19.5	N91°58'E	11+50.2	N84°52'E
57+17.2	S88°54'E	7+20.5	N92°16'E	11+50.2	N84°44'E
68+78.1	S88°54'E	7+21.5	N92°34'E	11+50.2	N84°36'E



MAP
SHOWING
LOCATION OF GO. ROAD TO GODS VALLEY
ALONG
SITE OF ABANDONED LOGGING ROAD
SECS 7, 8, 9, & 17, T31N, R10W
H.S. Coates, Co. Surv. Nov. 1912
SCALE 1"=400'