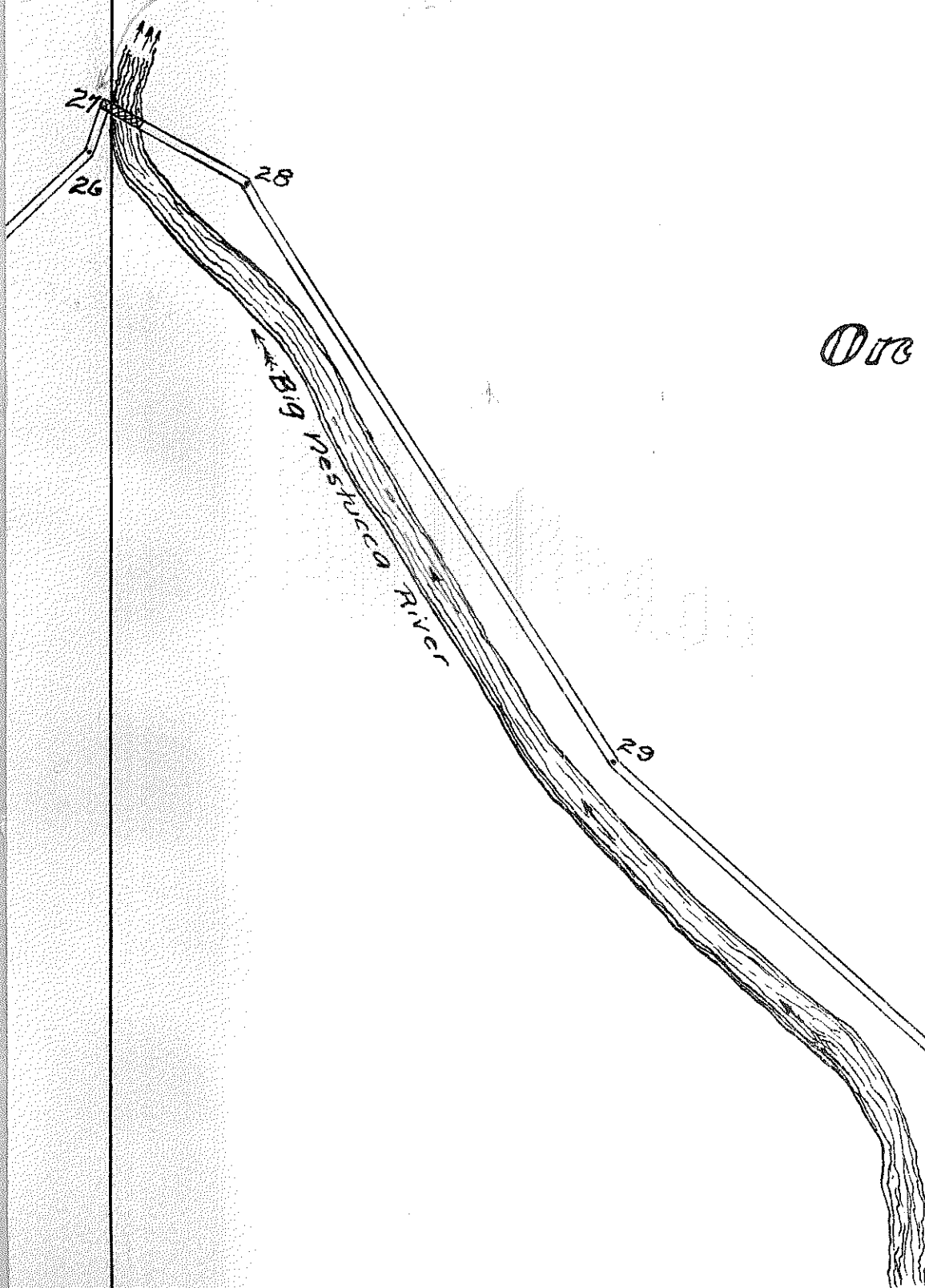


LX 7
P.O. #6674
F. B. WITC. J. W.
W. H. W. W.
P. S. W. W.



Ore William Smith

Martha Ray

M. A. Cady

Township line
3. S. 9. W. 25-2.59.
3. S. 8. W. 30-2.5.6.

SEE HOLLIST Co. Co
AHEAD 9AC
75

Rt. in present
County Road.
42

SEE 47
P.O. # 543
(read)
N 80° E 374
35

BLAINE TOWNSHIP

WILLIAM SMITH

P.O.B. #6674
40' WIDE QUITCLAIM
MARCH, 1909
AED 1968
DR 9-628

Or William Smith

Martha Ray

M.A. Cady

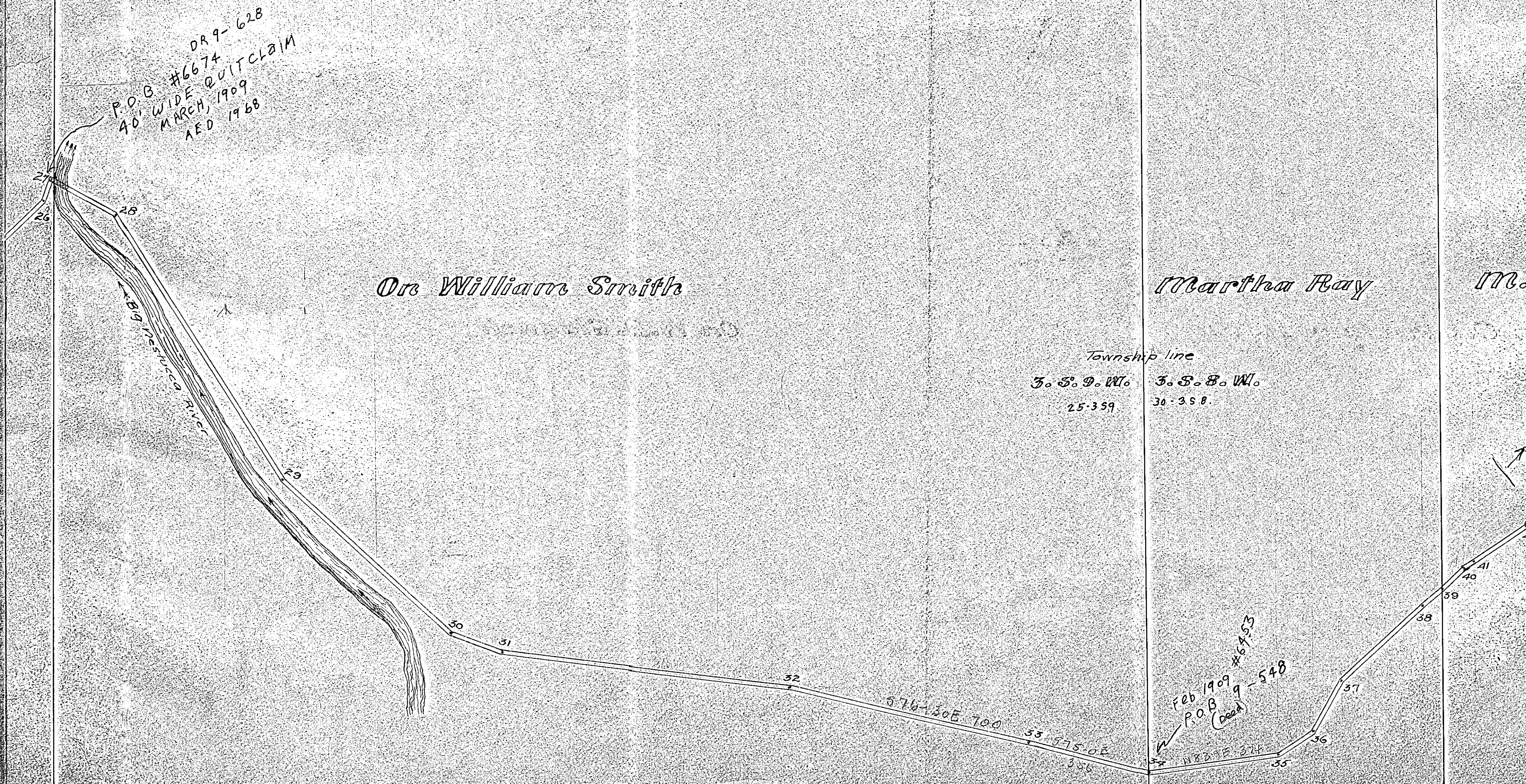
Township line

3. S. 9. W. 25-359
3. S. 8. W. 30-358

SEE HOLLOWETT CO RD
AHEAD 9/45

RT. in present
County Road

Feb 1909
P.O.B. (dead)
#6453
#548
N 82° E 274'



BLAIR RD