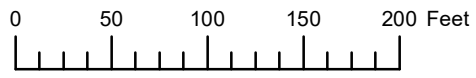


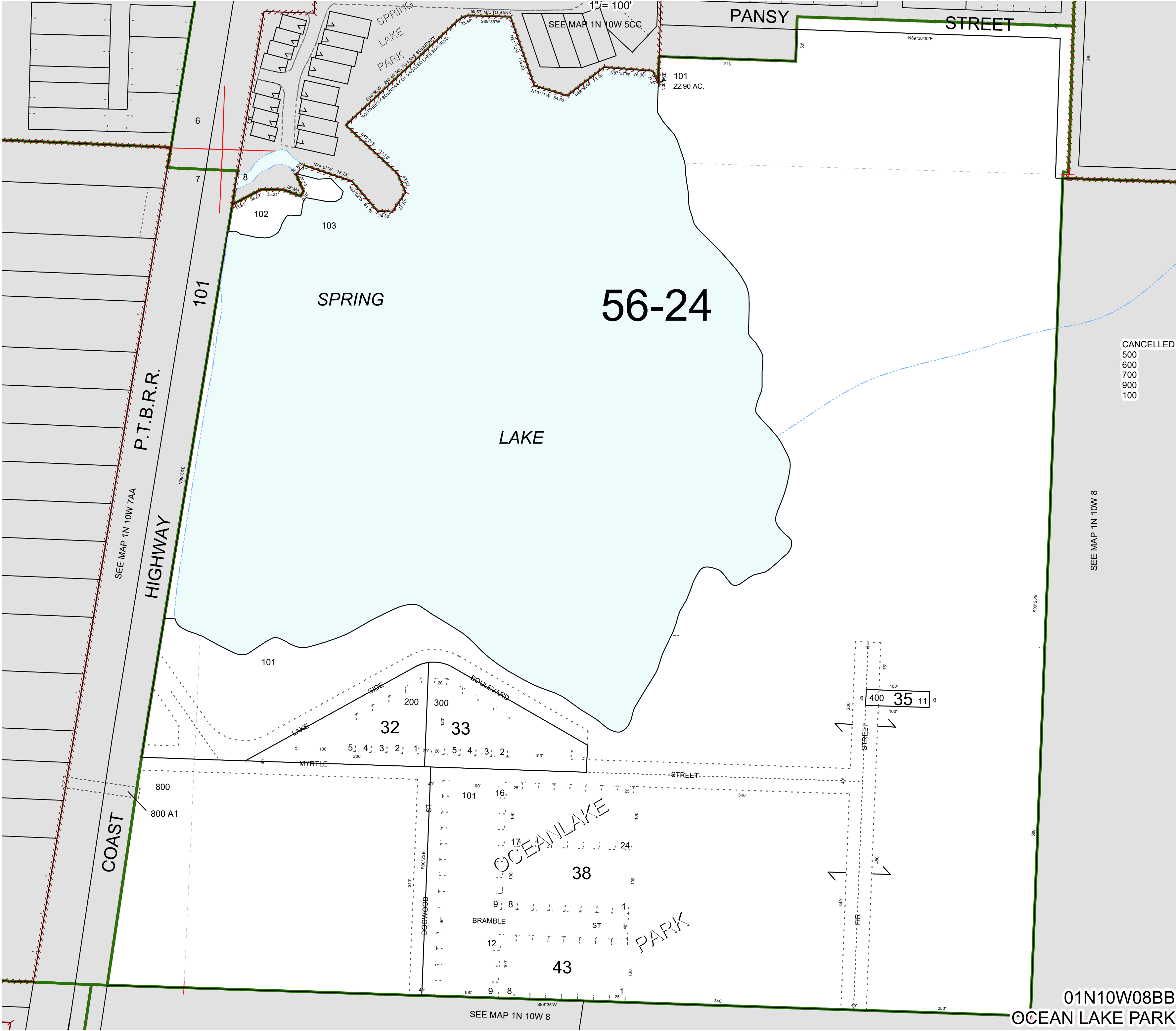
THIS MAP WAS PREPARED FOR
ASSESSMENT PURPOSE ONLY



N.W.1/4 N.W.1/4 SEC.8 T.1N. R.10W. W.M.

TILLAMOOK COUNTY

01N10W08BB
OCEAN LAKE PARK



01N10W08BB

OCEAN LAKE PARK

Revised 8/22/19, WS