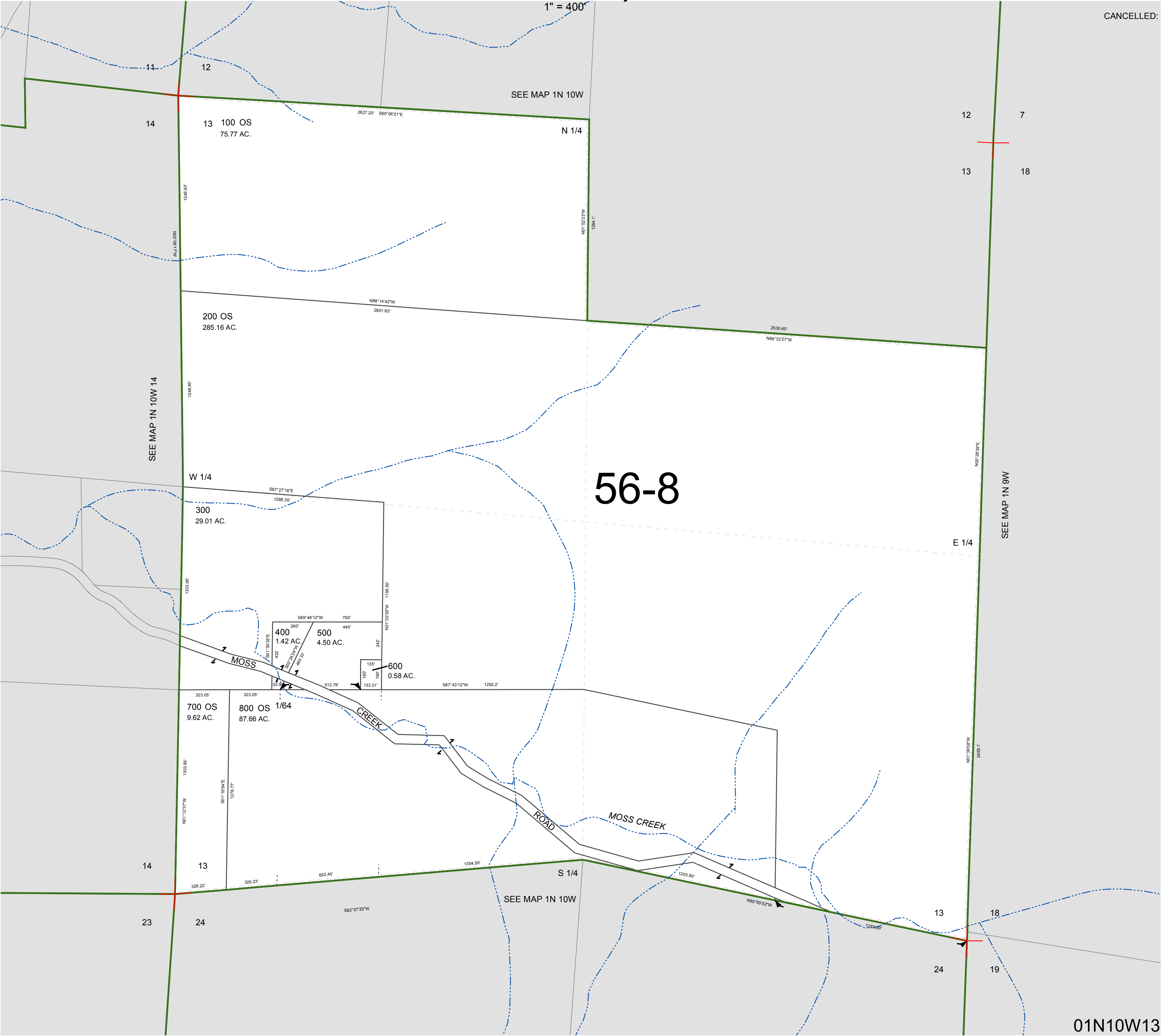


FOR ASSESSMENT AND TAXATION ONLY. NOT SUITABLE FOR  
LEGAL, ENGINEERING, OR SURVEY PURPOSES

SECTION 13 T.1N. R.10W. W.M.  
Tillamook County

01N10W13

CANCELLED:



01N10W13  
REVISED 5/1/15, WS