

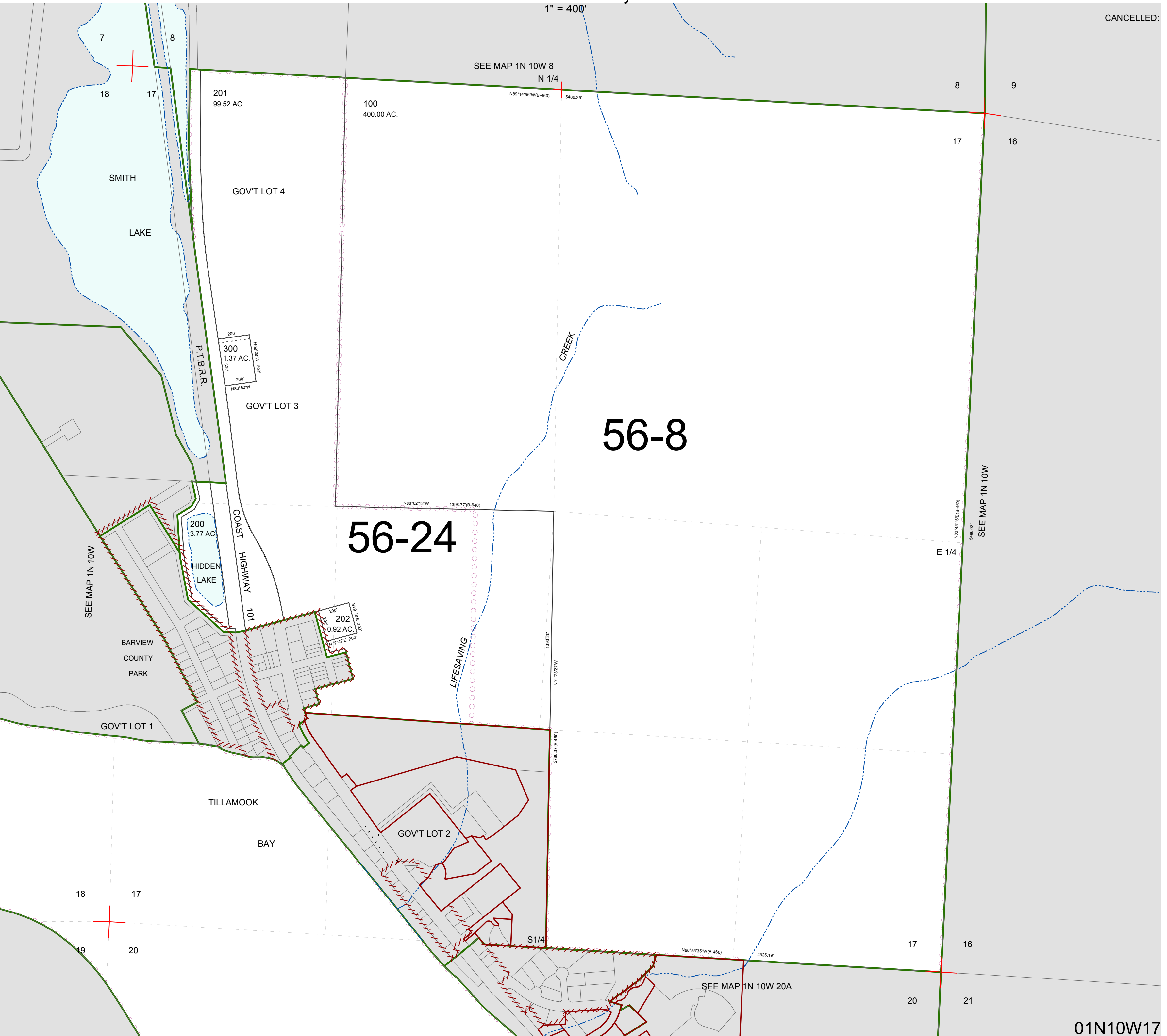
FOR ASSESSMENT AND TAXATION ONLY, NOT SUITABLE FOR
LEGAL, ENGINEERING, OR SURVEY PURPOSES

SECTION 17 T.1N. R.10W. W.M.
Tillamook County

$$1'' = 400'$$

01N10W17

CANCELLED:



01N10W17

REVISÉD 9/17/15, WS