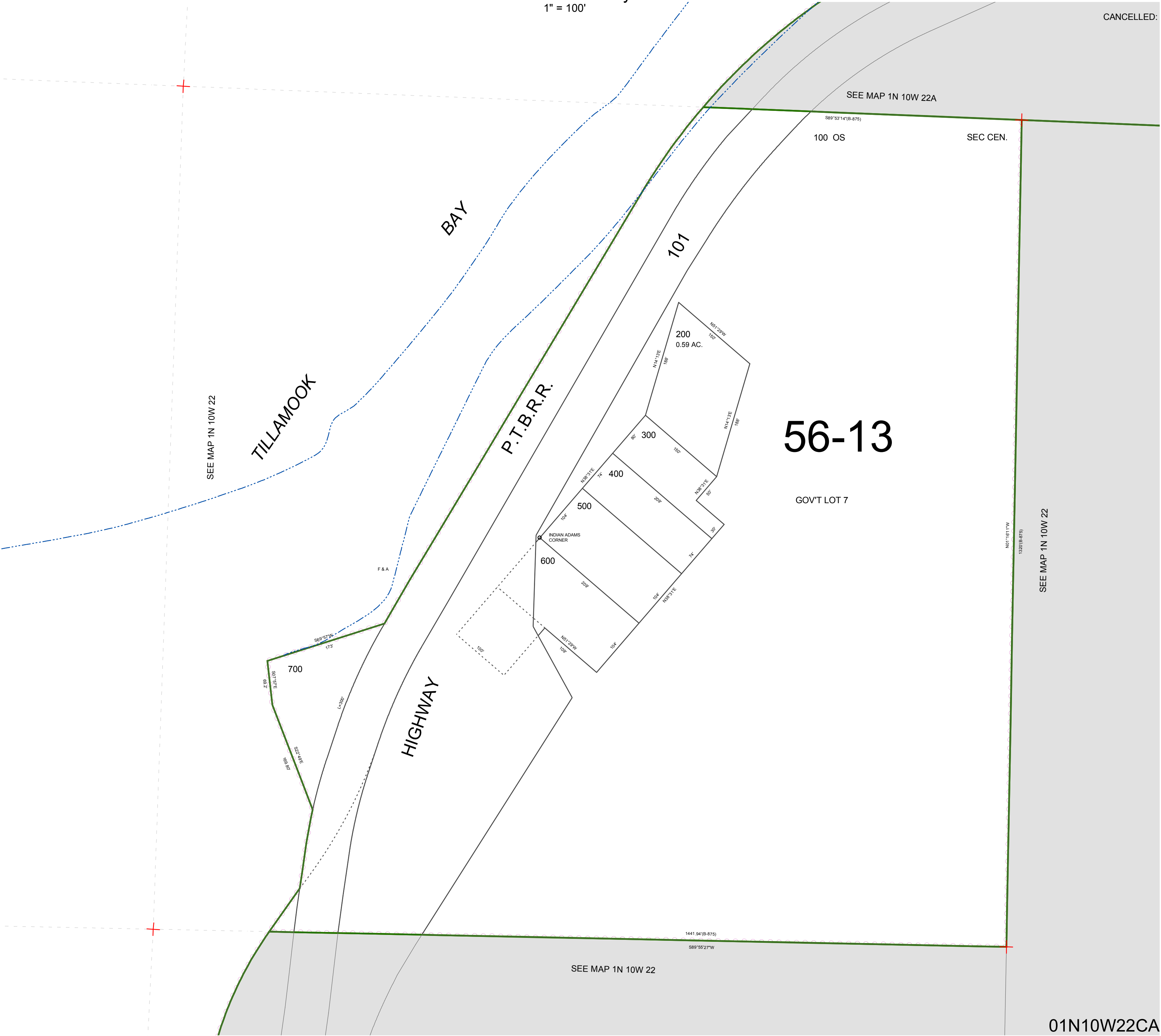


FOR ASSESSMENT AND TAXATION ONLY. NOT SUITABLE FOR
LEGAL, ENGINEERING, OR SURVEY PURPOSES

N.E. 1/4 S.W. 1/4 SEC. 22 T.1N. R.10W. W.M.
Tillamook County
1" = 100'

01N10W22CA

CANCELLED:



01N10W22CA
REVISED 6/23/11, WS