

THIS MAP WAS PREPARED FOR
ASSESSMENT PURPOSE ONLY

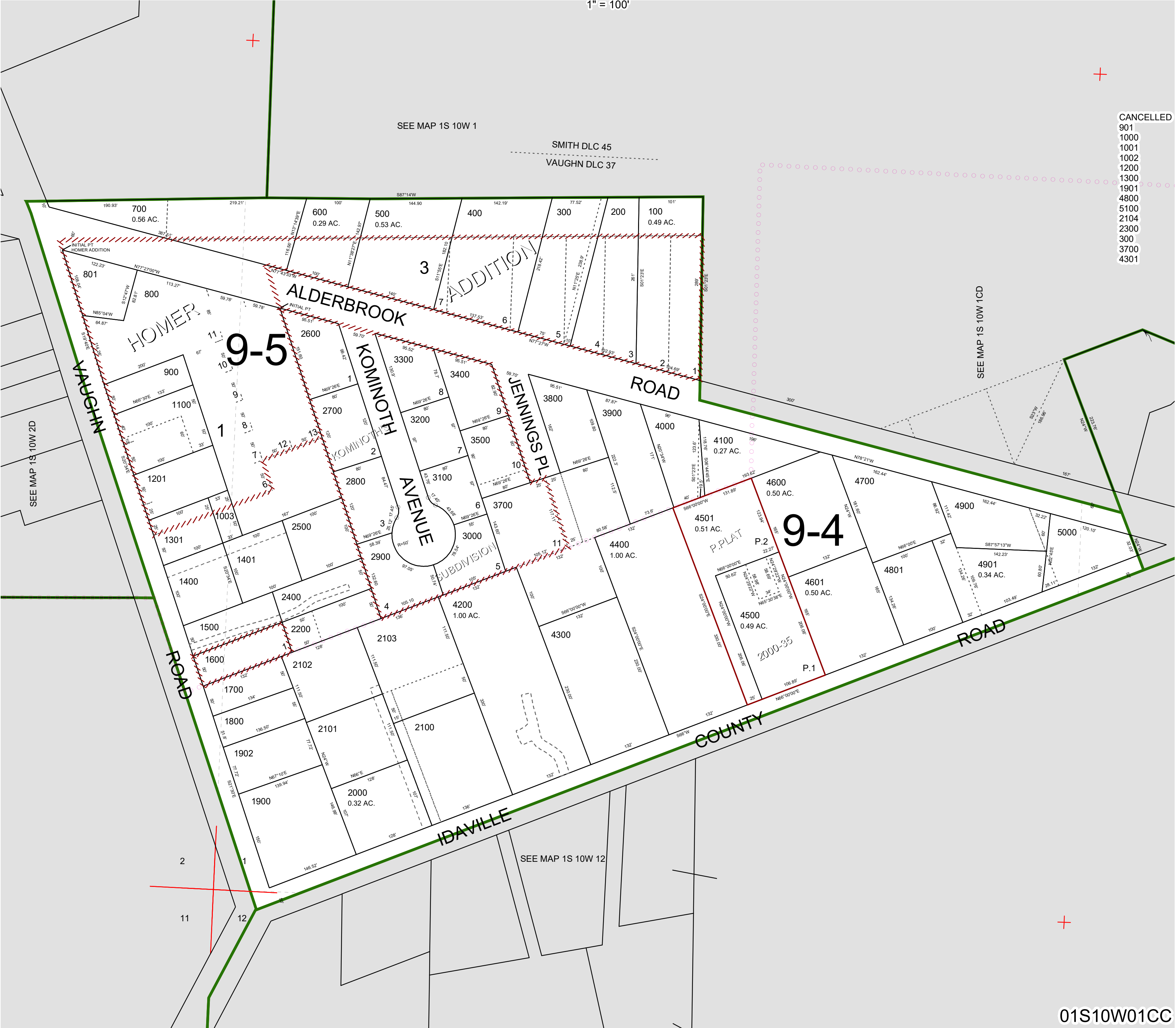
0 50 100 150 200 Feet

S.W.1/4 S.W.1/4 SEC.1 T.1S. R.10W. W.M.

TILLAMOOK COUNTY

1" = 100'

01S10W01CC



01S10W01CC

Revised 5/31/23, WS