

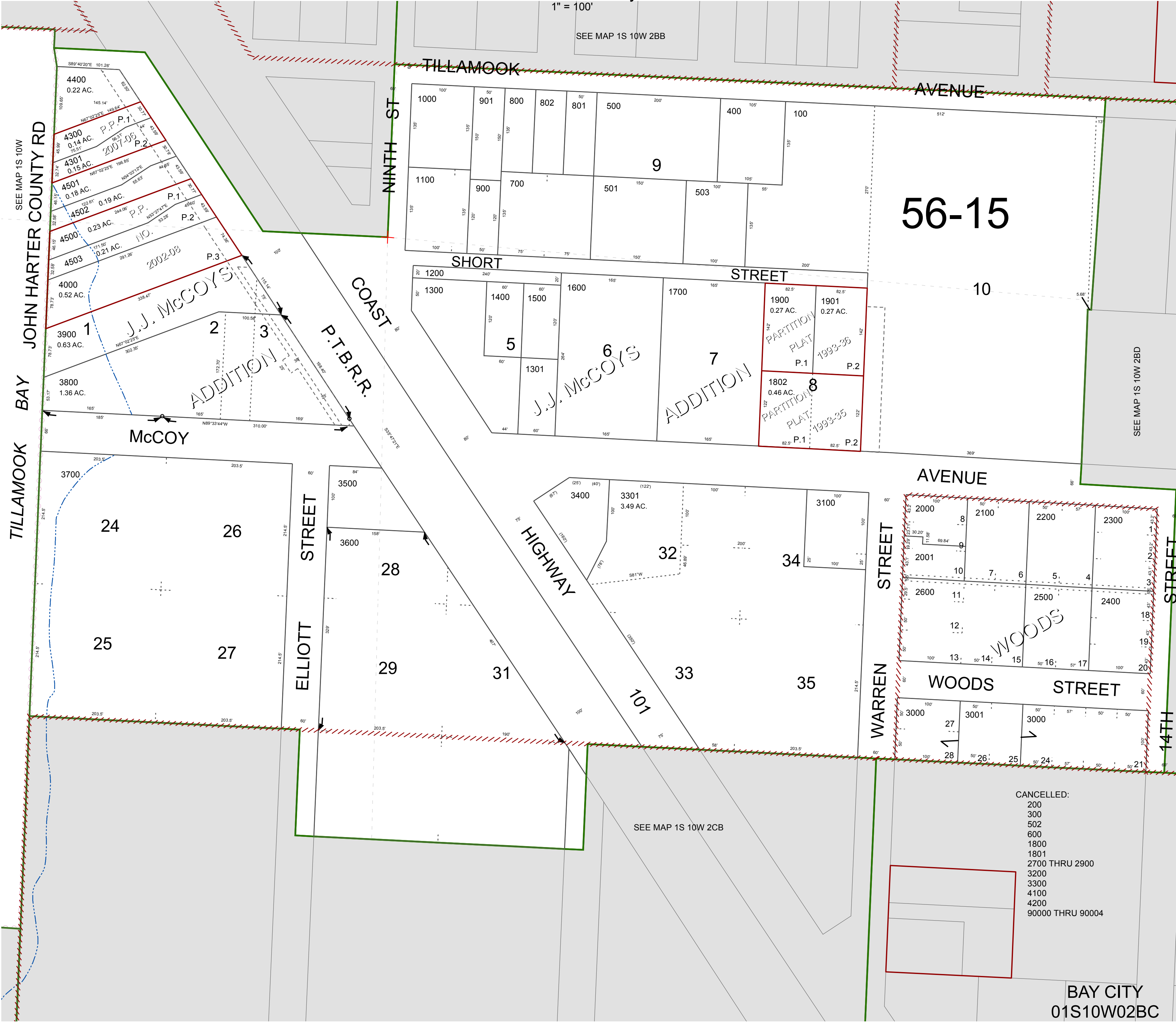
FOR ASSESSMENT AND TAXATION ONLY. NOT SUITABLE FOR  
LEGAL, ENGINEERING, OR SURVEY PURPOSES

S.W.1/4 N.W.1/4 SEC.2 T.1S. R.10W. W.M.  
Tillamook County

01S10W02BC  
BAY CITY

1" = 100'

SEE MAP 1S 10W 2BB



BAY CITY  
01S10W02BC

REVISED 12/5/13, WS