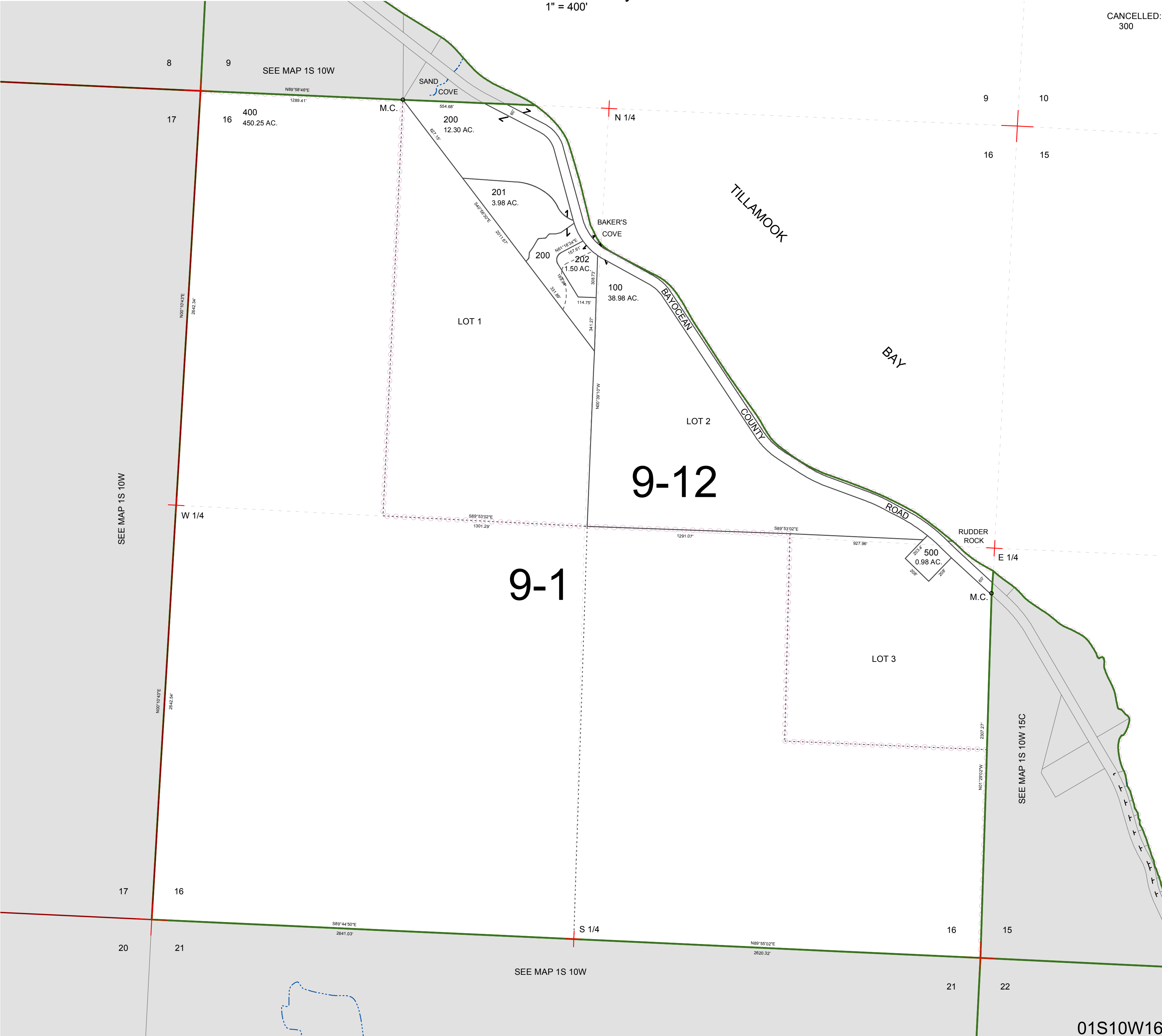


FOR ASSESSMENT AND TAXATION ONLY, NOT SUITABLE FOR
LEGAL, ENGINEERING, OR SURVEY PURPOSES

SECTION 16 T.1S. R.10W. W.M.
Tillamook County
1" = 400'

01S10W16

300



01S10W16

REVISED 2/18/16, WS