

FOR ASSESSMENT AND TAXATION ONLY, NOT SUITABLE FOR
LEGAL, ENGINEERING, OR SURVEY PURPOSES

N.E.1/4 S.W.1/4 SEC.25 T.1S. R.10W. W.M.

Tillamook County

$$1'' = 100'$$

SEE MAP 1S 10W 25

01S10W25CA

TILLAMOOK

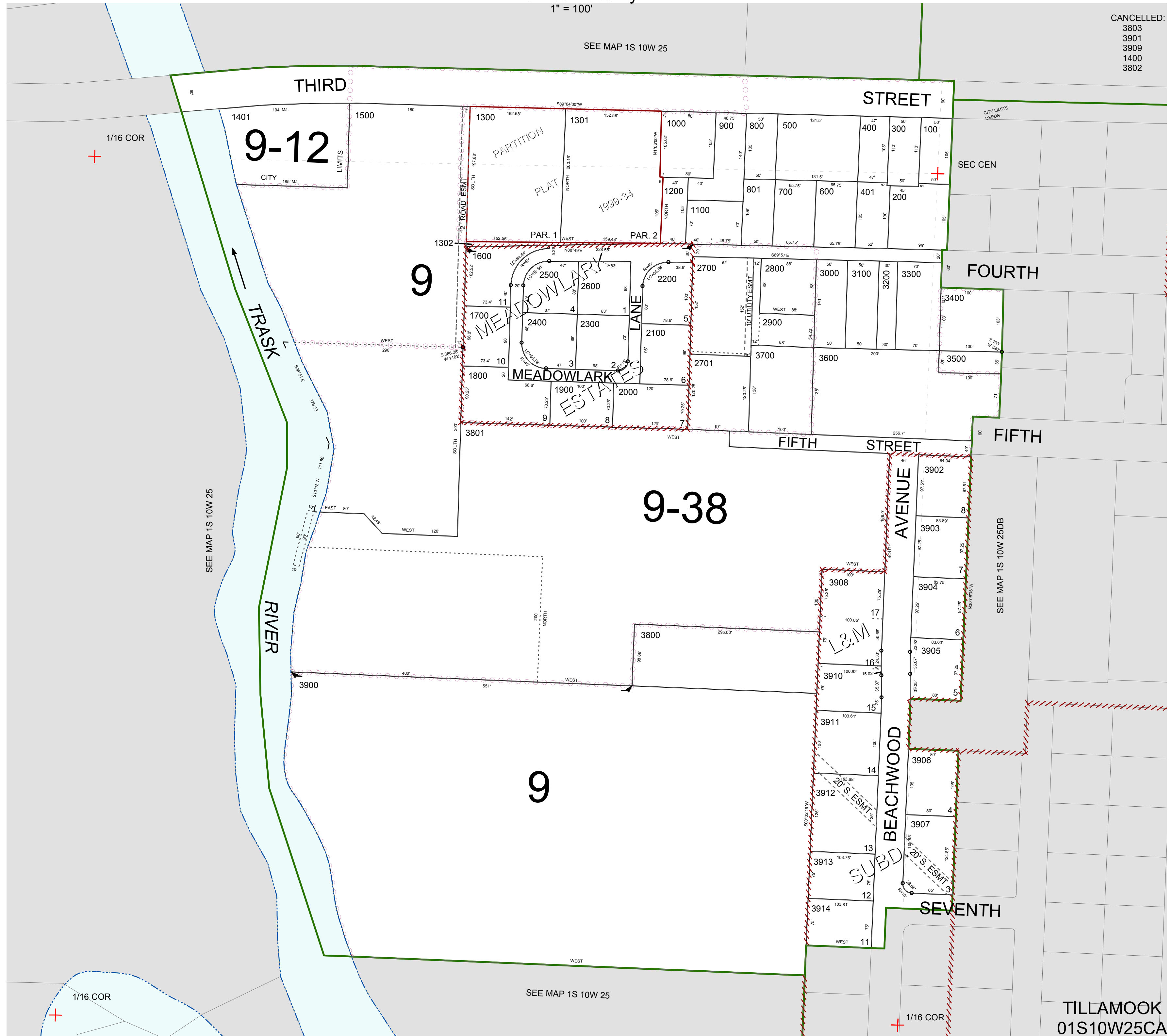
CANCELLED:
3803

3803
3001

3901
3909

1400

3802



TILLAMOOK

01S10W25CA

REVISÉ 8/29/17, WS