

189-0

SURVEYOR'S NARRATIVE:

I HARVEY L. BARBER CERTIFY THAT: I HAVE CORRECTLY SURVEYED THE LAND REPRESENTED ON THE ATTACHED PLAT. THE PURPOSE BEING TO CONVERT THE DUPLEX THEREON TO CONDOMINIUMS. I BEGIN AT THE SOUTHEAST CORNER OF PARCEL 3, PARTITION PLAT 2005-07, IN THE CENTER OF HAPPY CAMP ROAD, A PUBLIC EASEMENT, 36-FOOT WIDE. NOTE 1, MY INITIAL POINT, IN THE SOUTHEAST ONE-QUARTER OF SECTION 31, T1S, R10W, W.M., TILLAMOOK COUNTY, OREGON, A DULY RECORDED PLAT; ; THENCE ON THE BOUNDS OF PARCEL 3, N35°54'23"E 18.07 FEET TO AN IRON; THENCE N30°56'27"E 122.26 FEET TO AN IRON ON THE HIGHWAY LINE; THENCE N44°44'01"W ON SAID HIGHWAY LINE 65.20 FEET TO AN IRON; THENCE S26°52'41"W 139.50 FEET TO AN IRON; THENCE S26°47'08"W 10.01 FEET TO AN IRON ON THE ARC OF A 477.5 FOOT RADIUS CURVE; THENCE 65°52'41"E 50.42 FEET ON THE CHORD TO MY INITIAL POINT, CONTAINING 8,506 SQ. FT. SUBJECT TO A 18-FOOT WIDE PUBLIC EASEMENT OVER THE SOUTHWESTERLY 16 FEET OF SAID PLAT, ALSO SUBJECT TO A 10-FOOT WIDE DRAINAGE EASEMENT CONTIGUOUS TO AND ON THE NORTHEASTERLY SIDE OF SAID 18-FOOT PUBLIC EASEMENT AS SHOWN ON THE ATTACHED PLAT.

SURVEYOR'S CERTIFICATE:

I HARVEY L. BARBER HEREBY CERTIFY THAT I HAVE FOUND PROPER MONUMENTS FOR THE CORNERS OF THE LAND DESCRIBED AS FOLLOWS: PARCEL 3, PARTITION PLAT NO. 2005-007, A REPLAT OF PARCEL 2 AND A PORTION OF PARCEL 1 OF PARTITION PLAT NO. 2004-002 RECORDED MARCH 28, 2005 IN PLAT CABINET B-676-0, OF PARTITION PLAT RECORDS IN TILLAMOOK COUNTY, OREGON. TOGETHER WITH EASEMENTS AS GRANTED ON PARTITION PLAT NO. 2005-007 RECORDED MARCH 28, 2005 IN PLAT CABINET B876-0, OF PARTITION PLAT RECORDS IN TILLAMOOK COUNTY, OREGON, DEED 2007-000063. AND SUBJECT TO: EASEMENTS IN DEED BOOK 359 PAGE 627; EASEMENTS IN DEED BOOK 443 PAGE 696; EASEMENTS IN DEED BOOK 443 PAGE 698; EASEMENTS AS DELINEATED OR DEDICATED ON THE RECORDED PLAT.

NOTES:

1. MY INITIAL POINT, SE CORNER SAID PARCEL 3. FOUND A 5/8-INCH IRON ROD W/PC INSCRIBED DON MARK PLS 332, 9-INCHES DEEP, (SOUTHWEST CORNER OF HAPPY CAMP II CONDOMINIUMS).
2. FOUND A 5/8-INCH IRON ROD W/PC INSCRIBED DON MARK PLS 332, PP 2004-02.
3. FOUND A 5/8-INCH IRON ROD W/PC INSCRIBED DON MARK PLS 332, NORTHWEST CORNER OF PP 2006-01, PP 1990-07.
4. FOUND A 5/8-INCH IRON ROD W/PC INSCRIBED C WAYNE COOK PLS 1096.

RECORDING REFERENCE:

(ORS 209.250 (3) (e) 1);
PARTITION PLATS: 1990-7,
2005-06, 2005-07, 2006-01,
2006-03,
HAPPY CAMP I CONDOMINIUMS.

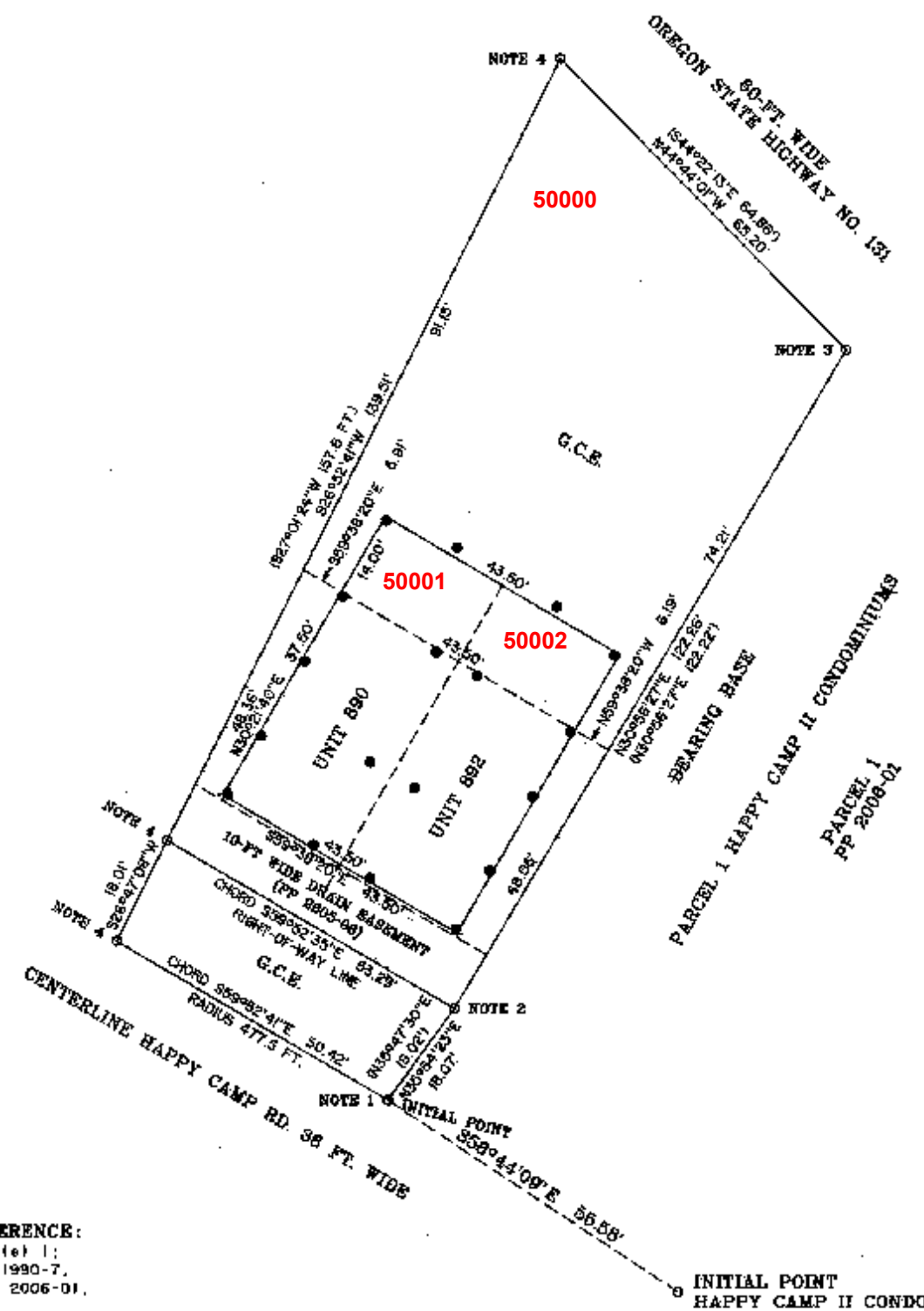
SURVEYOR'S CERTIFICATION:
I, HARVEY L. BARBER, A PROFESSIONAL LAND SURVEYOR, DO HEREBY CERTIFY THAT THE PLAT AND FLOOR PLANS OF HAPPY CAMP 890 AND HAPPY CAMP 892 CONDOMINIUMS FULLY AND ACCURATELY DEPICT THE BOUNDS OF THE UNITS, AND THAT THE CONSTRUCTION OF THE IMPROVEMENTS ON THIS PLAT WERE COMPLETED PRIOR TO 30 OCT. 2009.

HARVEY L. BARBER PLS 679

SOURCE OF ELEVATION:

FROM A BENCHMARK, A YELLOW PLASTIC COATED SPIKE, IN THE SOUTHWEST SIDE OF POWER POLE #317303, ON HAPPY CAMP ROAD, SET BY WAYNE COOK, SURVEYOR, CERTIFIED BY THE COUNTY SURVEYOR TO BE A KNOWN BENCH MARK AT 16 FT. ABOVE SEA LEVEL, ELEVATION: 16.00 FEET.

HAPPY CAMP 890 AND HAPPY CAMP 892 CONDOMINIUMS
A REPLAT OF PARCEL 3, PARTITION PLAT 2005-07
IN THE SE 1/4 SECTION 31, T1S, R10W, W.M.
TILLAMOOK COUNTY, OREGON
SCALE: 1" = 20 FEET DATE: OCTOBER 2009



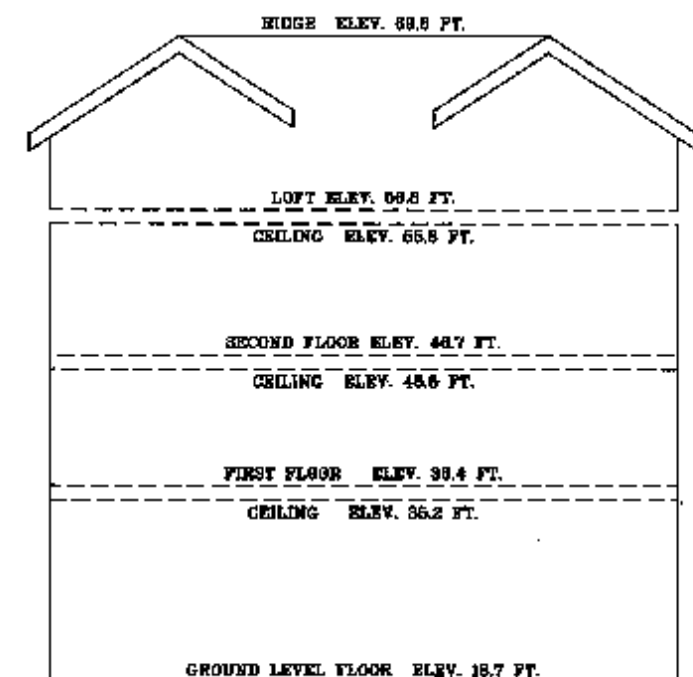
CONDITIONS AND RESTRICTIONS:

SEE TILLAMOOK COUNTY CLERK'S RECORDS DOCUMENT NO. 2010-004249 FOR CONDITIONS, DECLARATIONS, RESTRICTIONS, AND PROTECTIVE COVENANTS FOR CONDOMINIUMS.

DECLARATION:

KNOW ALL PEOPLE BY THESE PRESENTS THAT ATHON W. DEMOS AND KATHERINE C. DEMOS, TRUSTEES, AK DEMOS TRUST, AUGUST 2, 2000 AND GEORGE J. DEMOS AND GRETHER R. DEMOS, TRUSTEES, DEMOS LIVING TRUST, AUGUST 5, 1994, ARE THE OWNERS OF THE LAND AS REPRESENTED ON THE ATTACHED MAP; DO HEREBY, ANNEX, CREATE, ESTABLISH, AND DECLARE, THE ATTACHED MAP OF HAPPY CAMP 890 AND HAPPY CAMP 892 CONDOMINIUMS TO BE A TRUE AND CORRECT PLAT THEREOF, ALL UNITS BEING OF THE DIMENSIONS SHOWN, AND THE LIMITED COMMON ELEMENTS ARE AS DESIGNATED, AND DO HEREBY SUBMIT SAID LAND TO THE PROVISIONS OF THE OREGON CONDOMINIUM ACT, OREGON REVISED STATUTES 100.005 TO 100.625. THE GENERAL COMMON ELEMENTS ARE DEFINED IN THE STATUTE.

George J. Demos *Gretcher R. Demos* *Athon W. Demos* *Katherine C. Demos*
TRUSTEE TRUSTEE TRUSTEE TRUSTEE



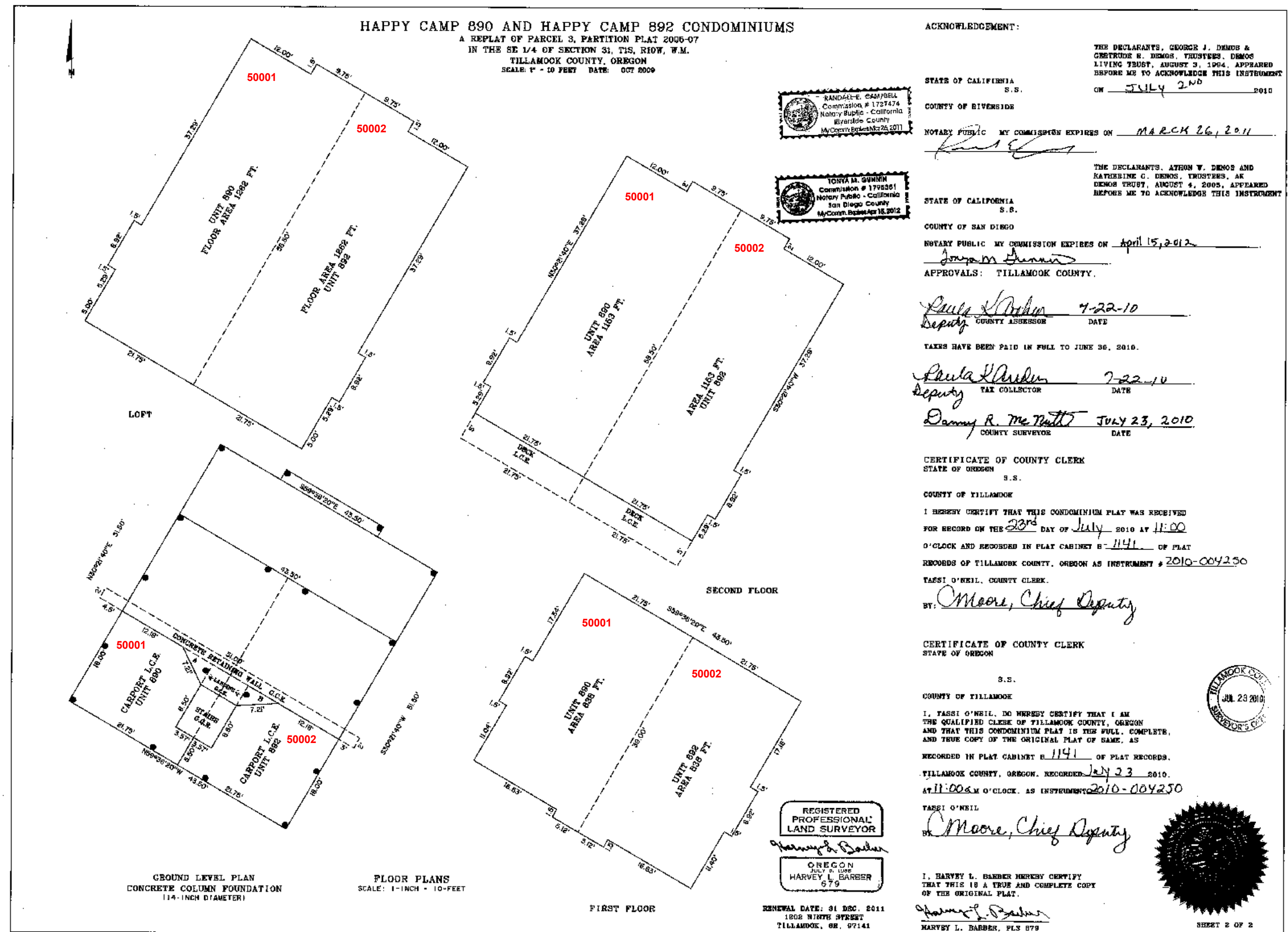
RENEWAL DATE: 31 DEC. 2011
1202 NINTH STREET
TILLAMOOK, OR. 97141



SHEET 1 OF 2

C-581

189-0



C-581