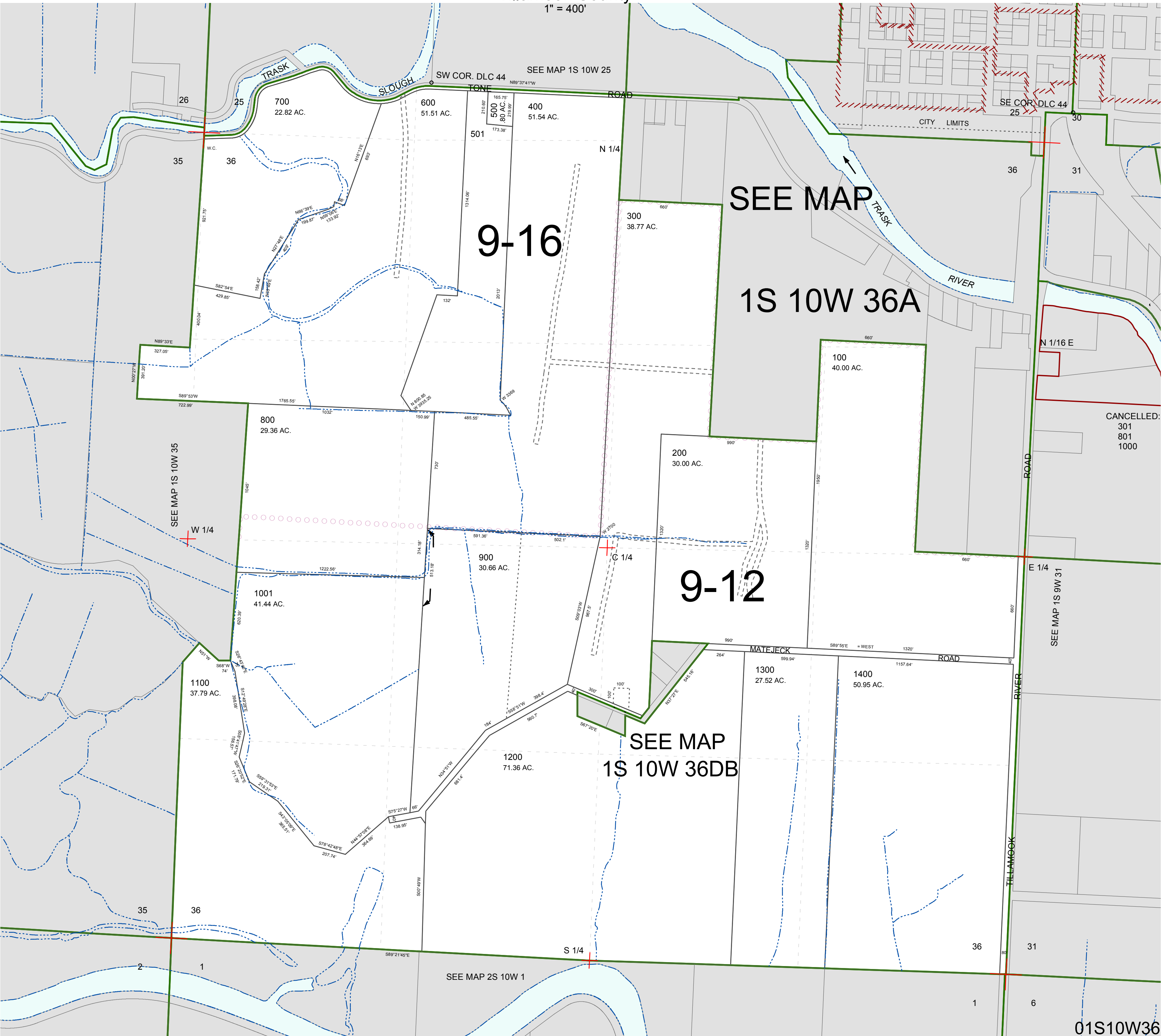


FOR ASSESSMENT AND TAXATION ONLY, NOT SUITABLE FOR
LEGAL, ENGINEERING, OR SURVEY PURPOSES

SECTION 36 T.1S. R.10W. W.M.
Tillamook County

 $1'' = 400$

01S10W36



01S10W36

REVISED 2/18/16, WS