

THIS MAP WAS PREPARED FOR
ASSESSMENT PURPOSE ONLY

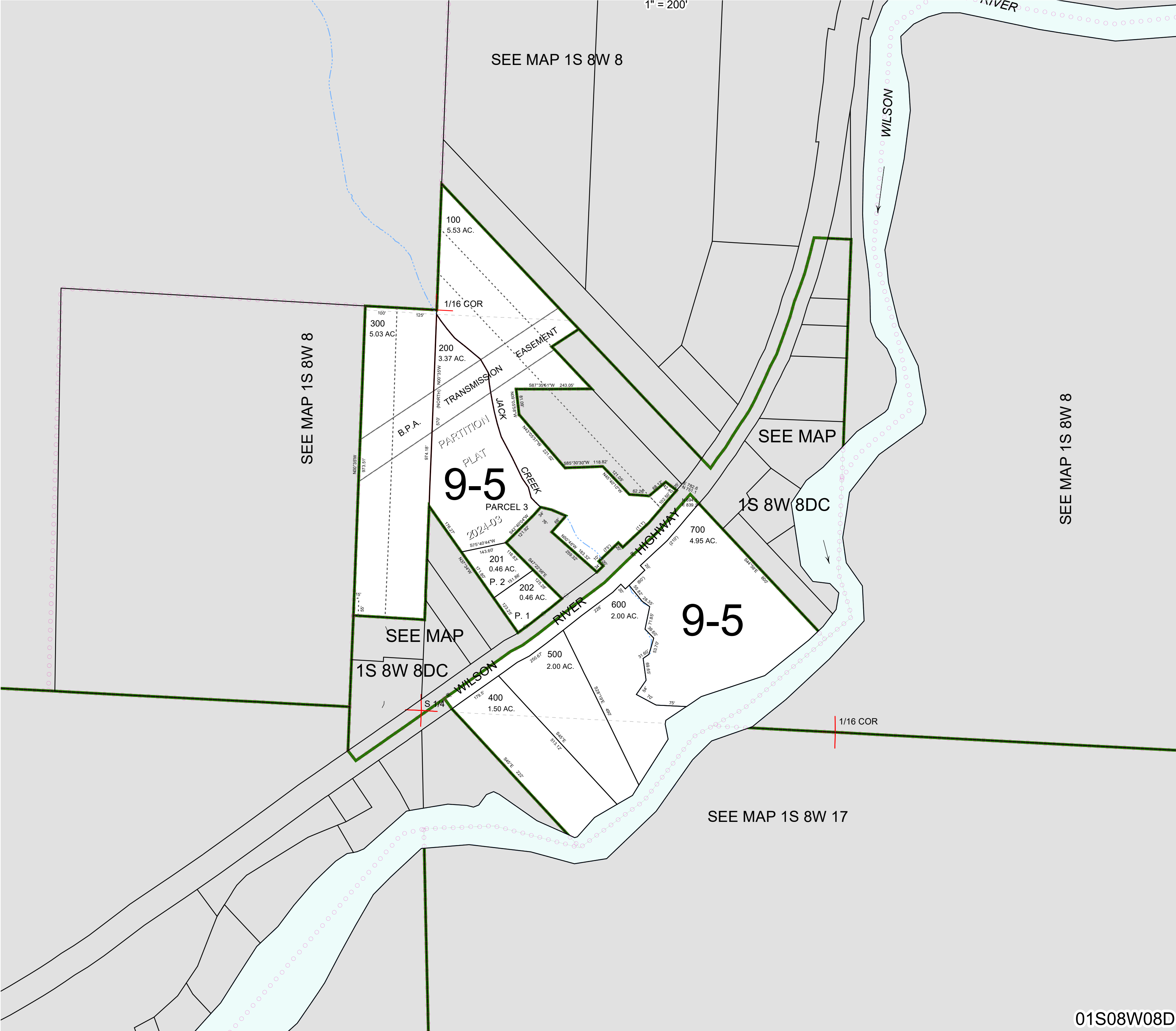
0 100 200 300 400 Feet

S.E. 1/4 SEC. 8 T.1S. R.8W. W.M.

TILLAMOOK COUNTY

01S08W08D

1" = 200'



01S08W08D

Revised 4/01/24, WS