

FOR ASSESSMENT AND TAXATION ONLY, NOT SUITABLE FOR
LEGAL, ENGINEERING, OR SURVEY PURPOSES

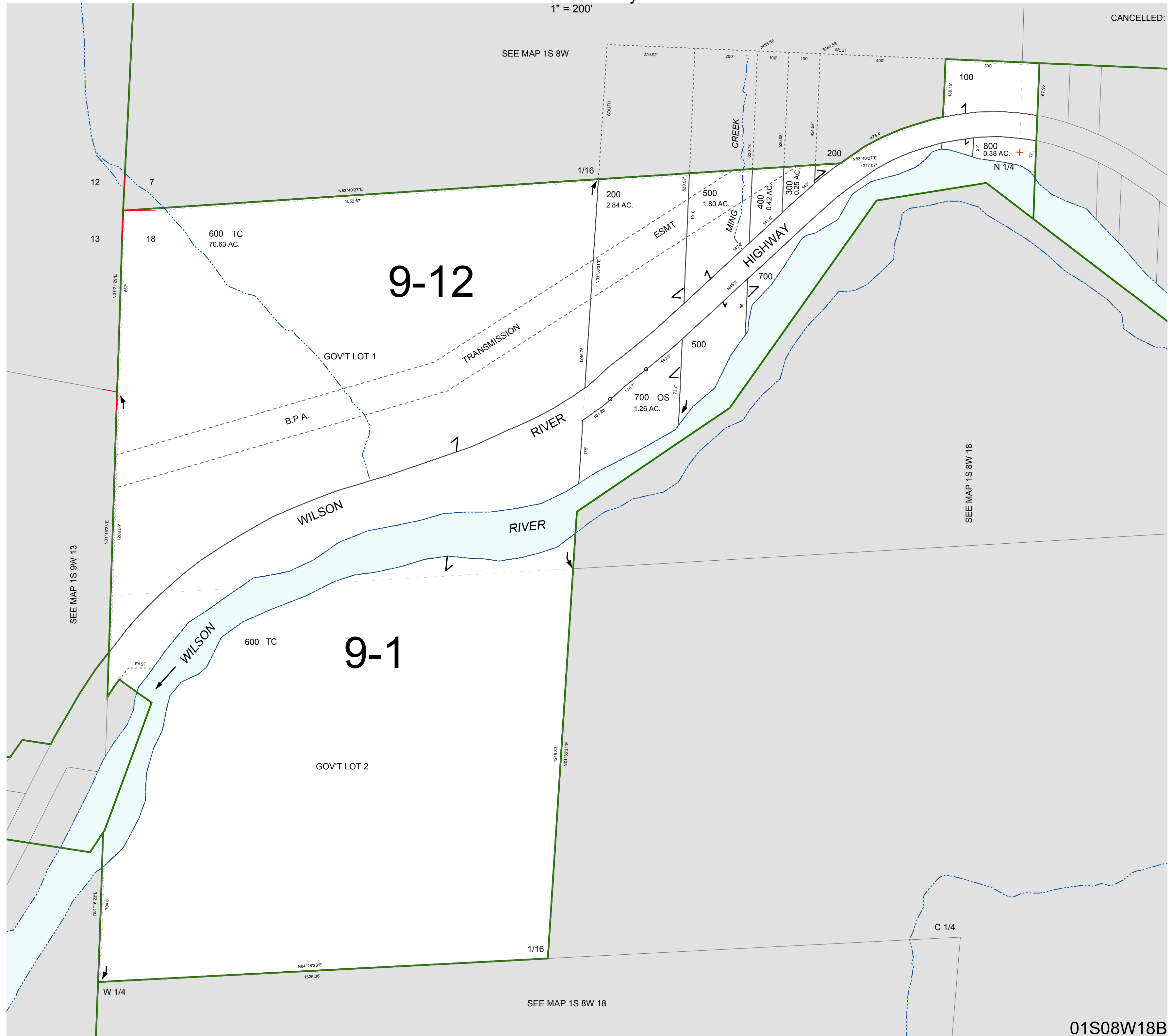
N.W.1/4 SEC.18 T.1S. R.8W. W.M.

Tillamook County

 $1'' = 200'$

01S08W18B

CANCELLED:



01S08W18B

REVISÉD 2/18/16, WS