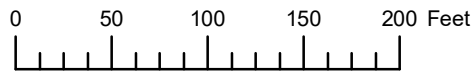


THIS MAP WAS PREPARED FOR
ASSESSMENT PURPOSE ONLY

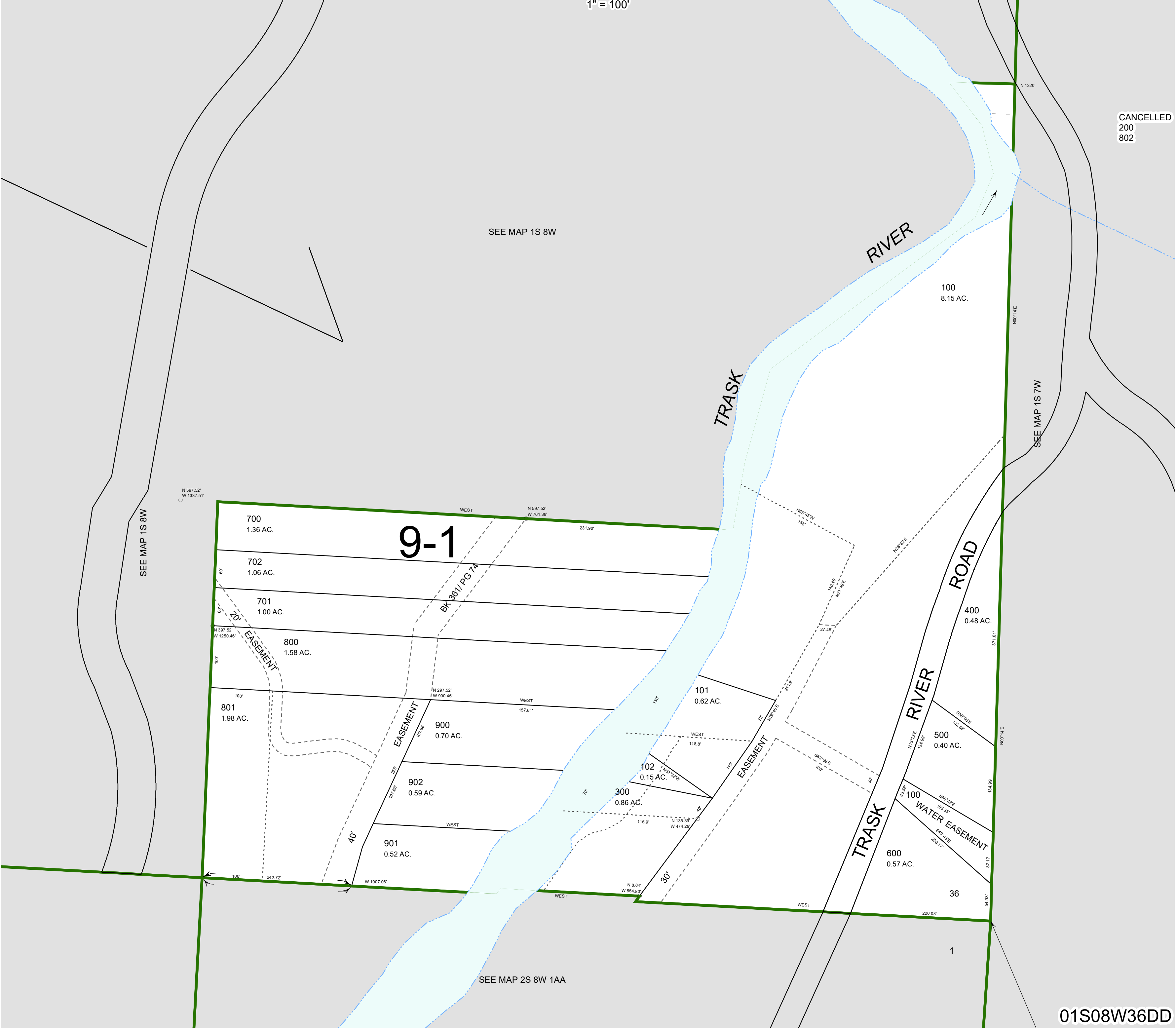


S.E.1/4 S.E.1/4 SEC.36 T.1S. R.8W. W.M.

TILLAMOOK COUNTY

1" = 100'

01S08W36DD



CANCELLED
200
802

01S08W36DD

Revised 08/07/20, WS