

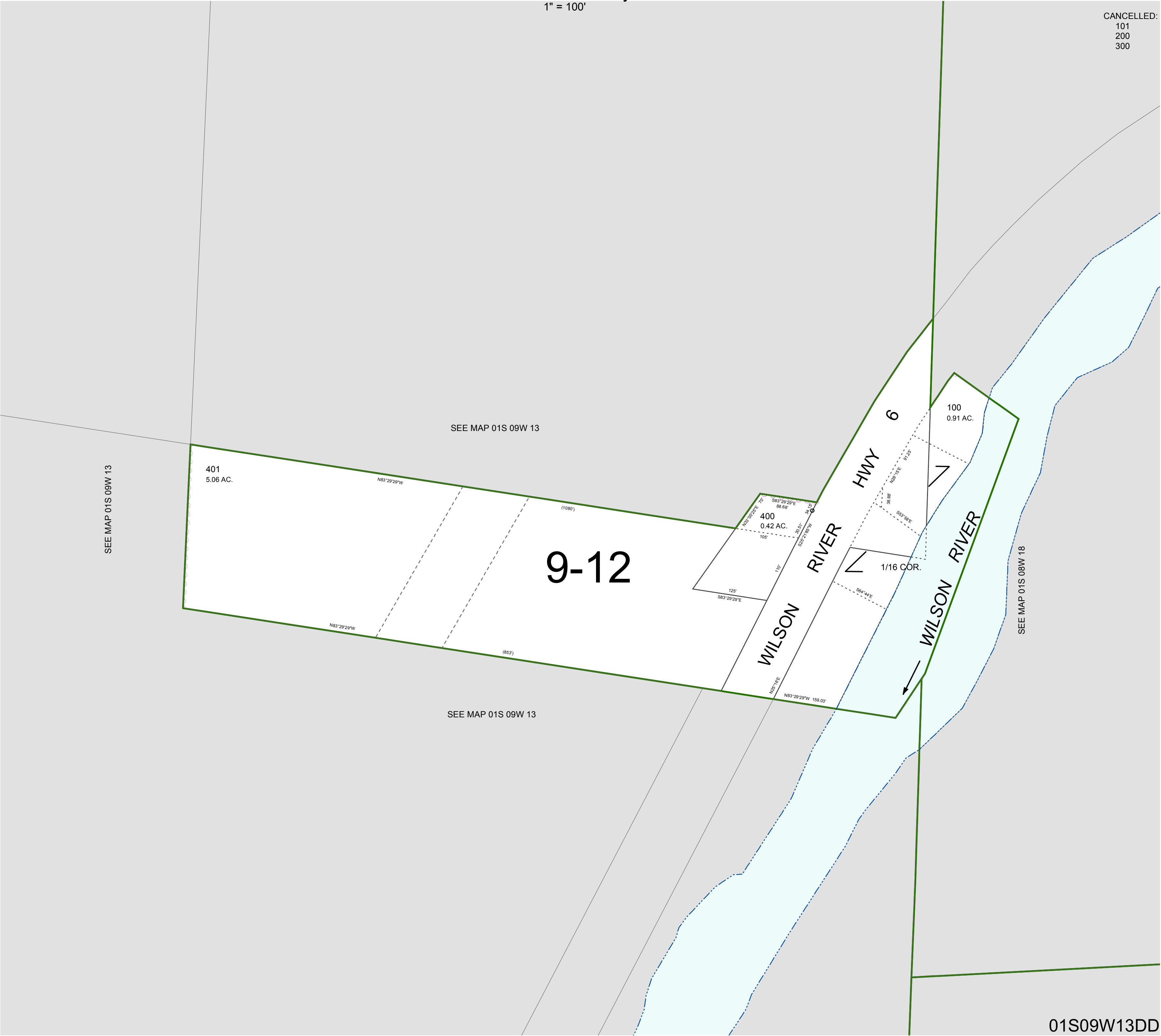
FOR ASSESSMENT AND TAXATION ONLY, NOT SUITABLE FOR
LEGAL, ENGINEERING, OR SURVEY PURPOSES

S.E.1/4 S.E.1/4 SEC.13 T.1S. R.9W. W.M.
Tillamook County

1" = 100'

01S09W13DD

CANCELLED:
101
200
300



01S09W13DD
REVISED 2/18/16, WS