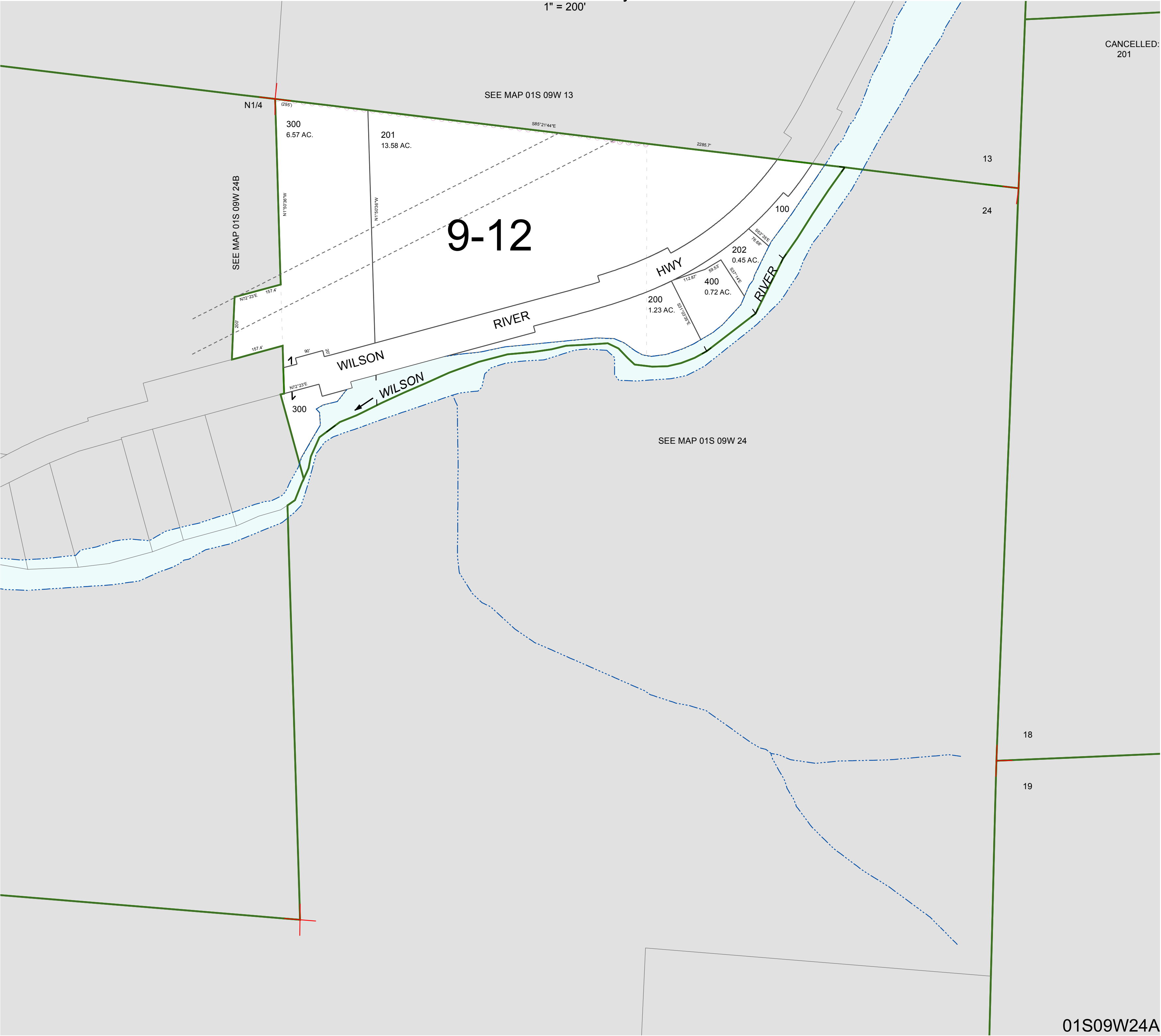


FOR ASSESSMENT AND TAXATION ONLY, NOT SUITABLE FOR
LEGAL, ENGINEERING, OR SURVEY PURPOSES

N.E.1/4 SEC.24 T.1S. R.9W. W.M.
Tillamook County
1" = 200'

01S09W24A

CANCELLED:
201



01S09W24A
REVISED 2/18/16, WS