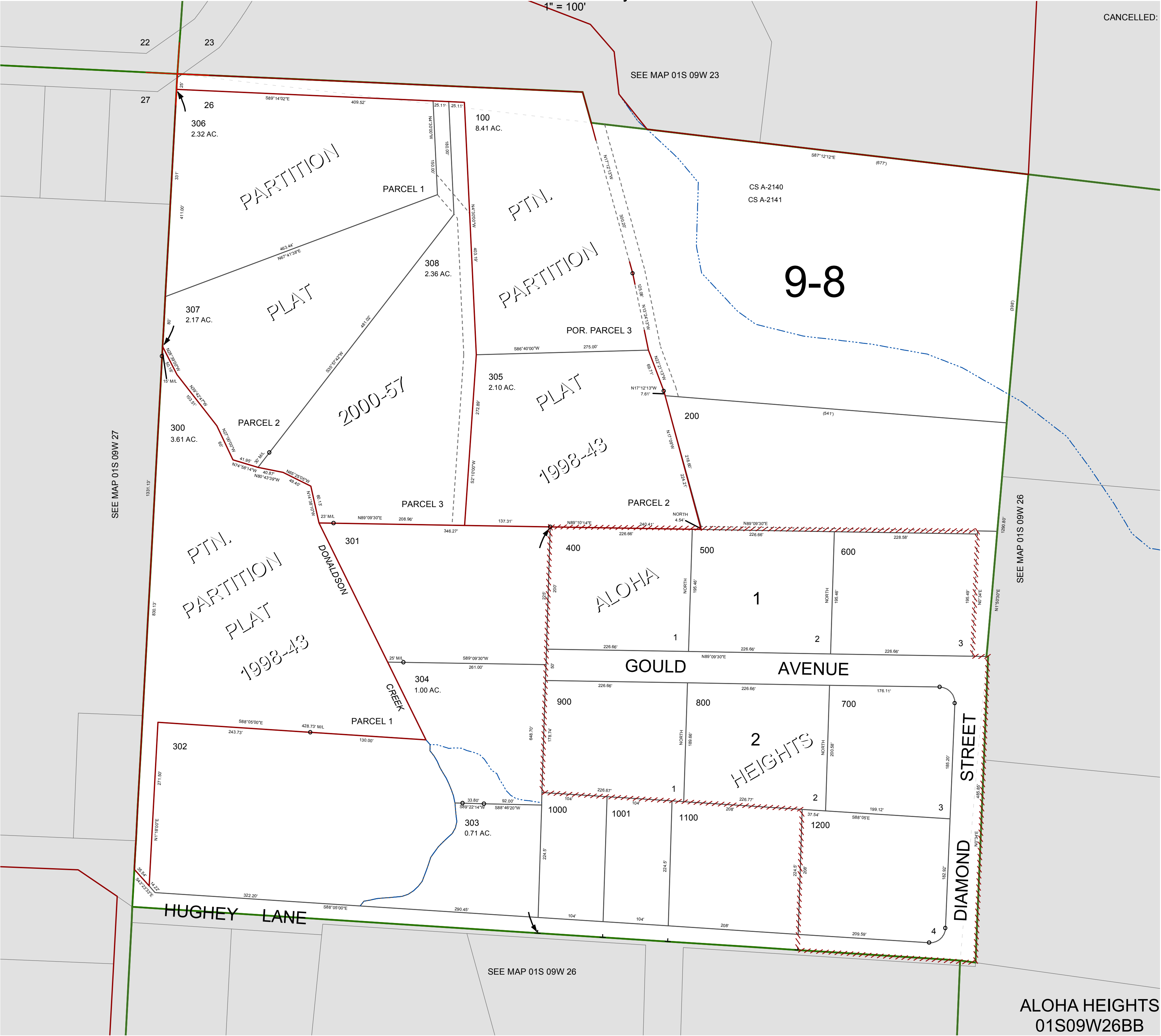


FOR ASSESSMENT AND TAXATION ONLY, NOT SUITABLE FOR
LEGAL, ENGINEERING, OR SURVEY PURPOSES

N.W.1/4 N.W.1/4 SEC.26 T.1S. R.9W. W.M.
Tillamook County

01S09W26BB
ALOHA HEIGHTS

CANCELLED:



ALOHA HEIGHTS
01S09W26BB

REVISED 2/18/16, WS