

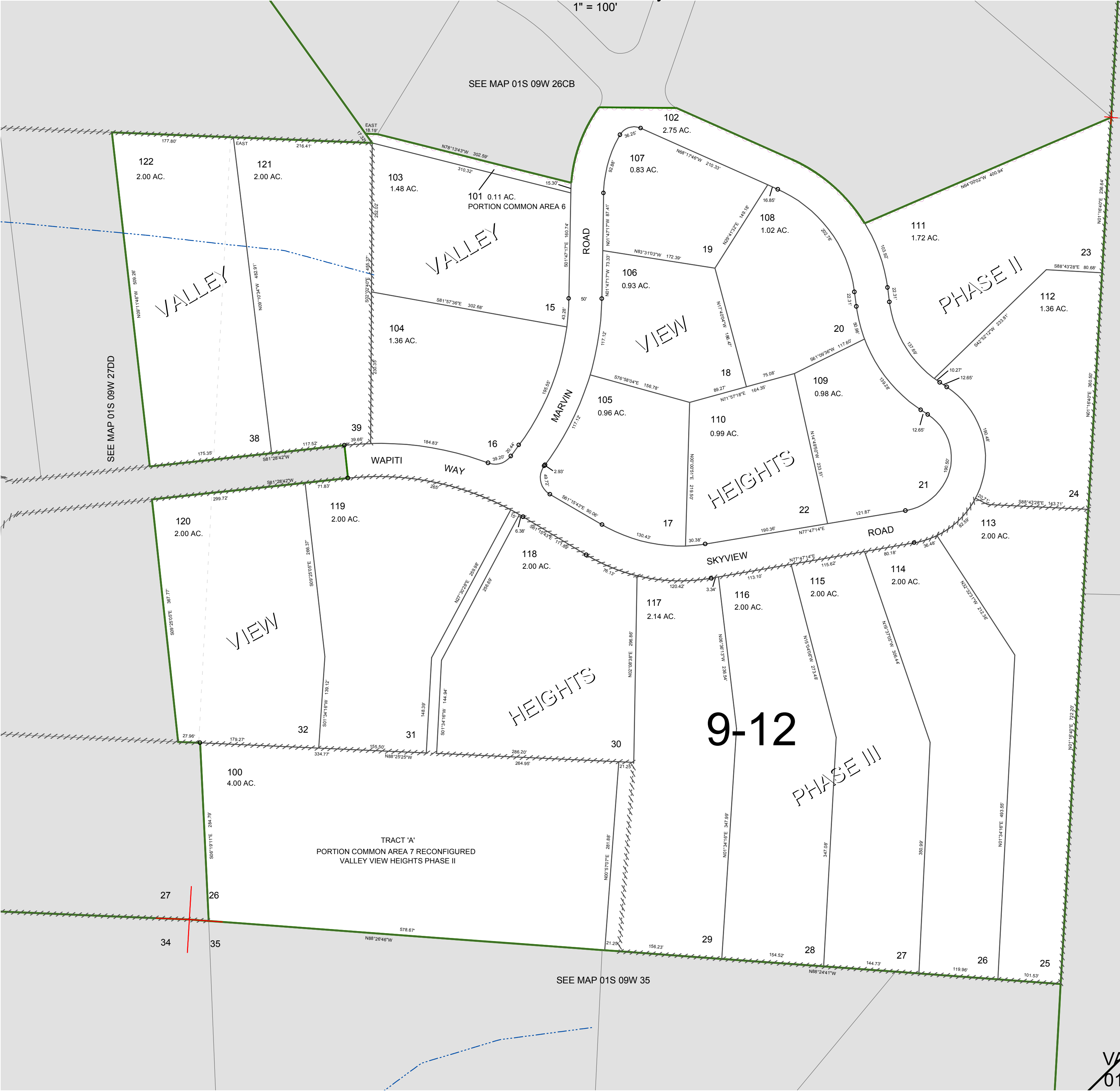
FOR ASSESSMENT AND TAXATION ONLY. NOT SUITABLE FOR
LEGAL, ENGINEERING, OR SURVEY PURPOSES

S.W.1/4 S.W.1/4 SEC.26 T.1S. R.9W. W.M.
Tillamook County

1" = 100'

01S09W26CC
VALLEY VIEW

CANCELLED:
200



VALLEY VIEW
01S09W26CC
REVISED 10/30/09, WS