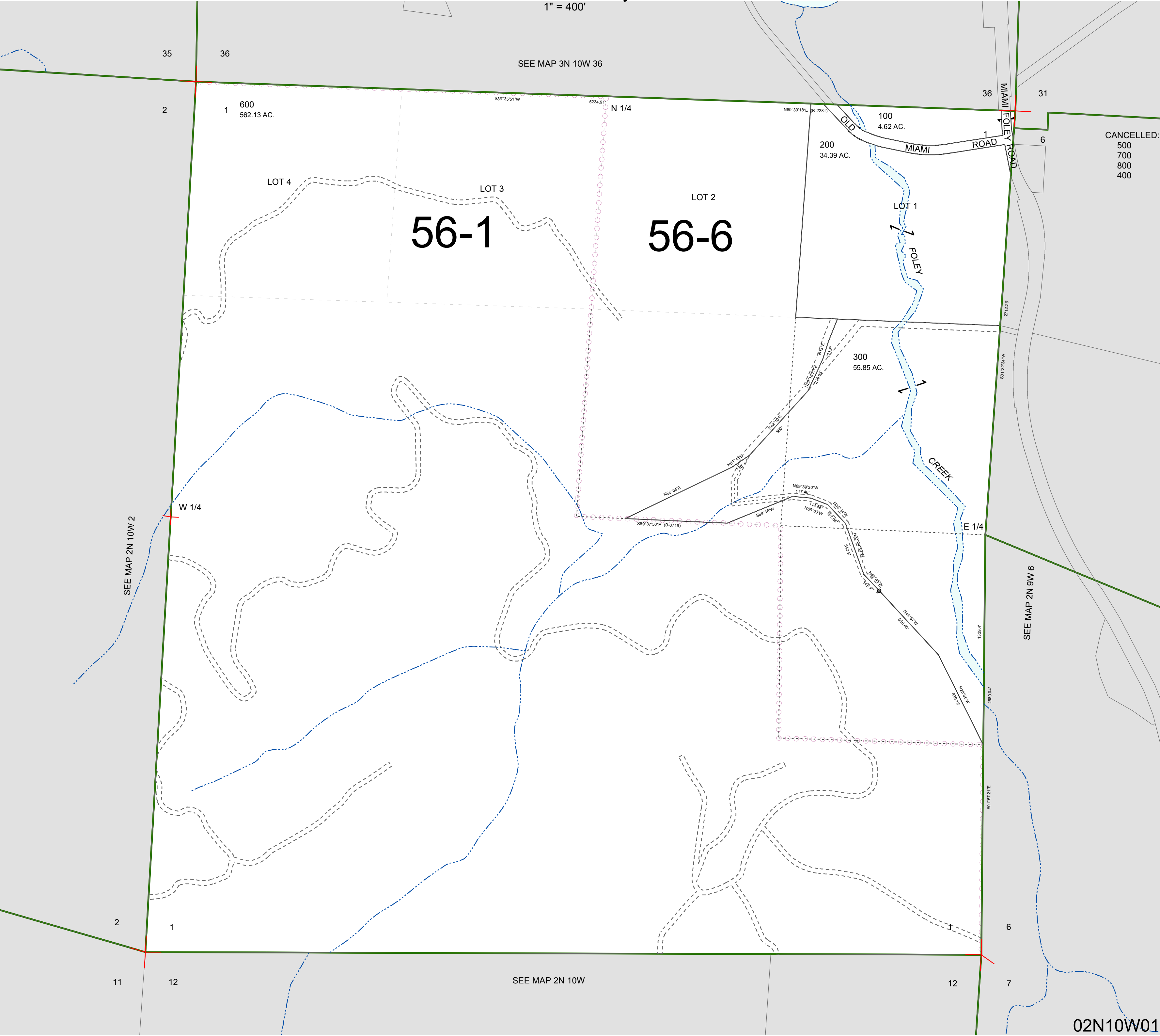


FOR ASSESSMENT AND TAXATION ONLY, NOT SUITABLE FOR
LEGAL, ENGINEERING, OR SURVEY PURPOSES

SECTION 1 T.2N. R.10W. W.M.
Tillamook County

1" = 400'

02N10W01



CANCELLED:
500
700
800
400

02N10W01
REVISED 9/17/15, WS