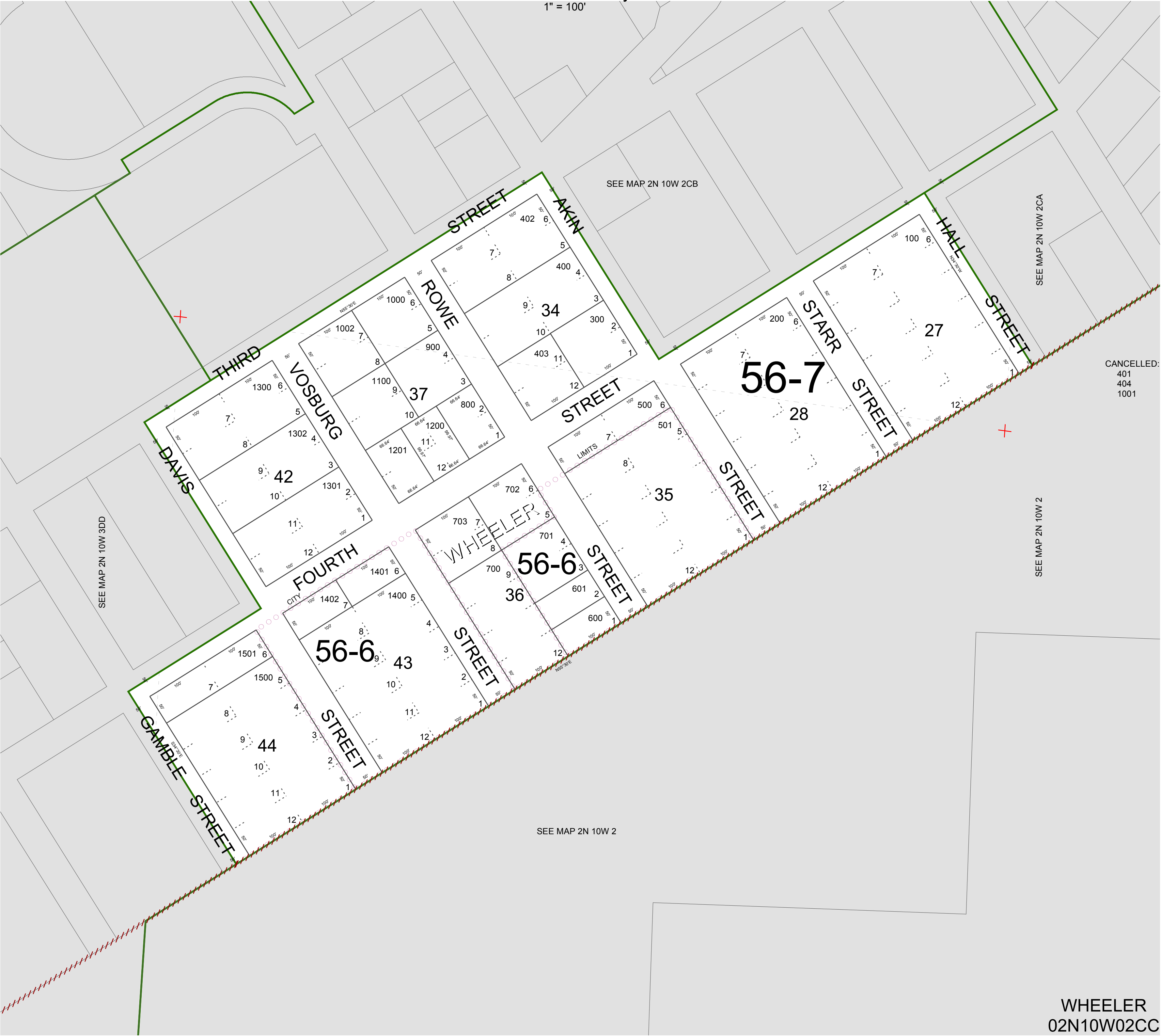


FOR ASSESSMENT AND TAXATION ONLY, NOT SUITABLE FOR  
LEGAL, ENGINEERING, OR SURVEY PURPOSES

S.W.1/4 S.W.1/4 SEC.2 T.2N. R.10W. W.M.  
Tillamook County  
1" = 100'

02N10W02CC  
WHEELER



WHEELER  
02N10W02CC  
REVISED 8/24/16, WS