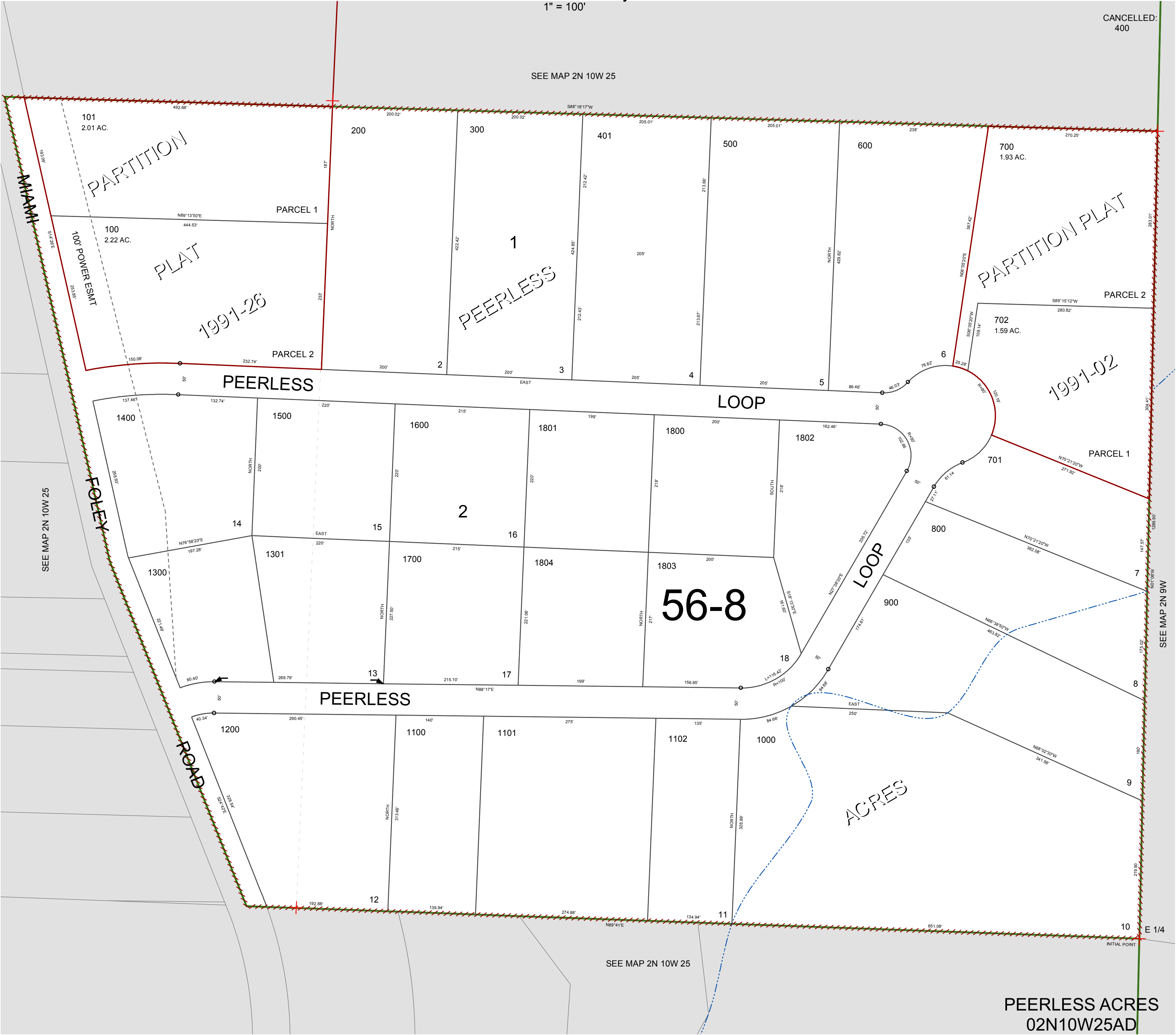


FOR ASSESSMENT AND TAXATION ONLY. NOT SUITABLE FOR  
LEGAL, ENGINEERING, OR SURVEY PURPOSES

S.E.1/4 N.E.1/4 SEC.25 T.2N. R.10W. W.M.  
Tillamook County  
1" = 100'

02N10W25AD  
PEERLESS ACRES

CANCELLED:  
400



PEERLESS ACRES  
02N10W25AD

REVISED 6/5/14, WS