

THIS MAP WAS PREPARED FOR
ASSESSMENT PURPOSE ONLY

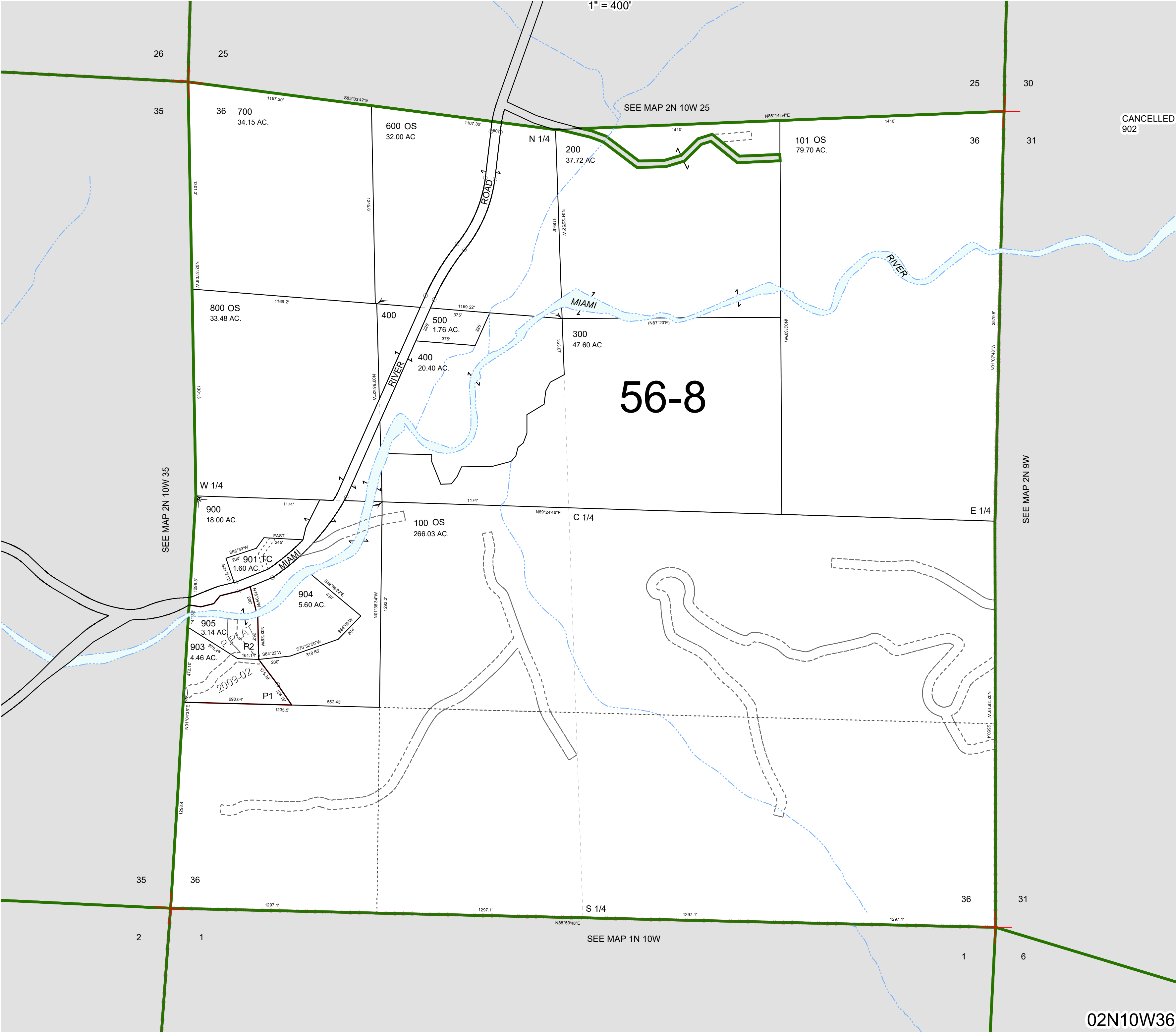
0 200 400 600 800 Feet

SECTION 36 T.2N. R.10W. W.M.

TILLAMOOK COUNTY

02N10W36

1" = 400'



CANCELLED
902

56-8

02N10W36

Revised 05/18/21, WS