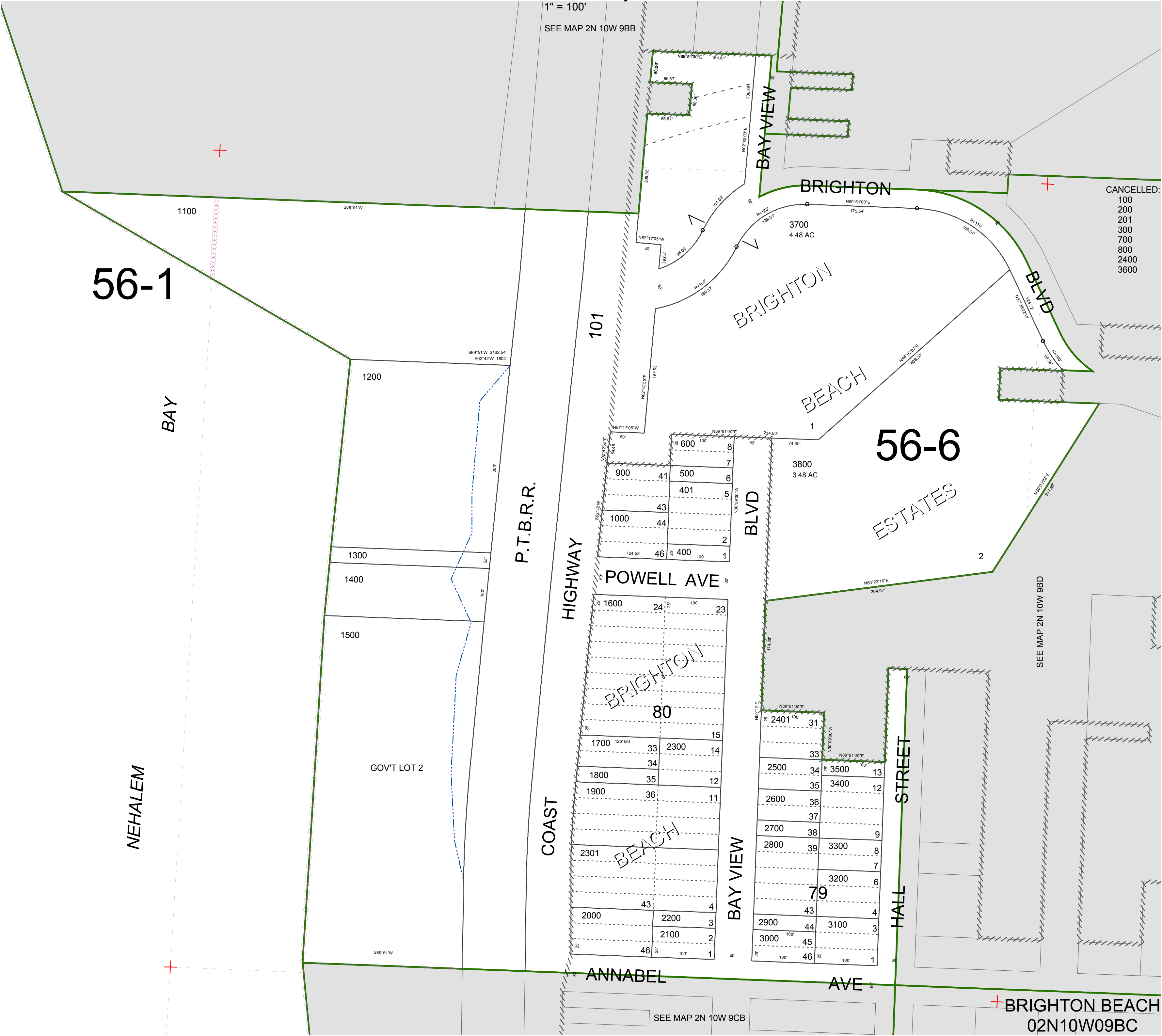


FOR ASSESSMENT AND TAXATION ONLY. NOT SUITABLE FOR
LEGAL, ENGINEERING, OR SURVEY PURPOSES

S.W.1/4 N.W.1/4 SEC.9 T.2N. R.10W. W.M.
Tillamook County

02N10W09BC
BRIGHTON BEACH

1" = 100'
SEE MAP 2N 10W 9BB



02N10W09BC
BRIGHTON BEACH

REVISED 07/21/09, WS