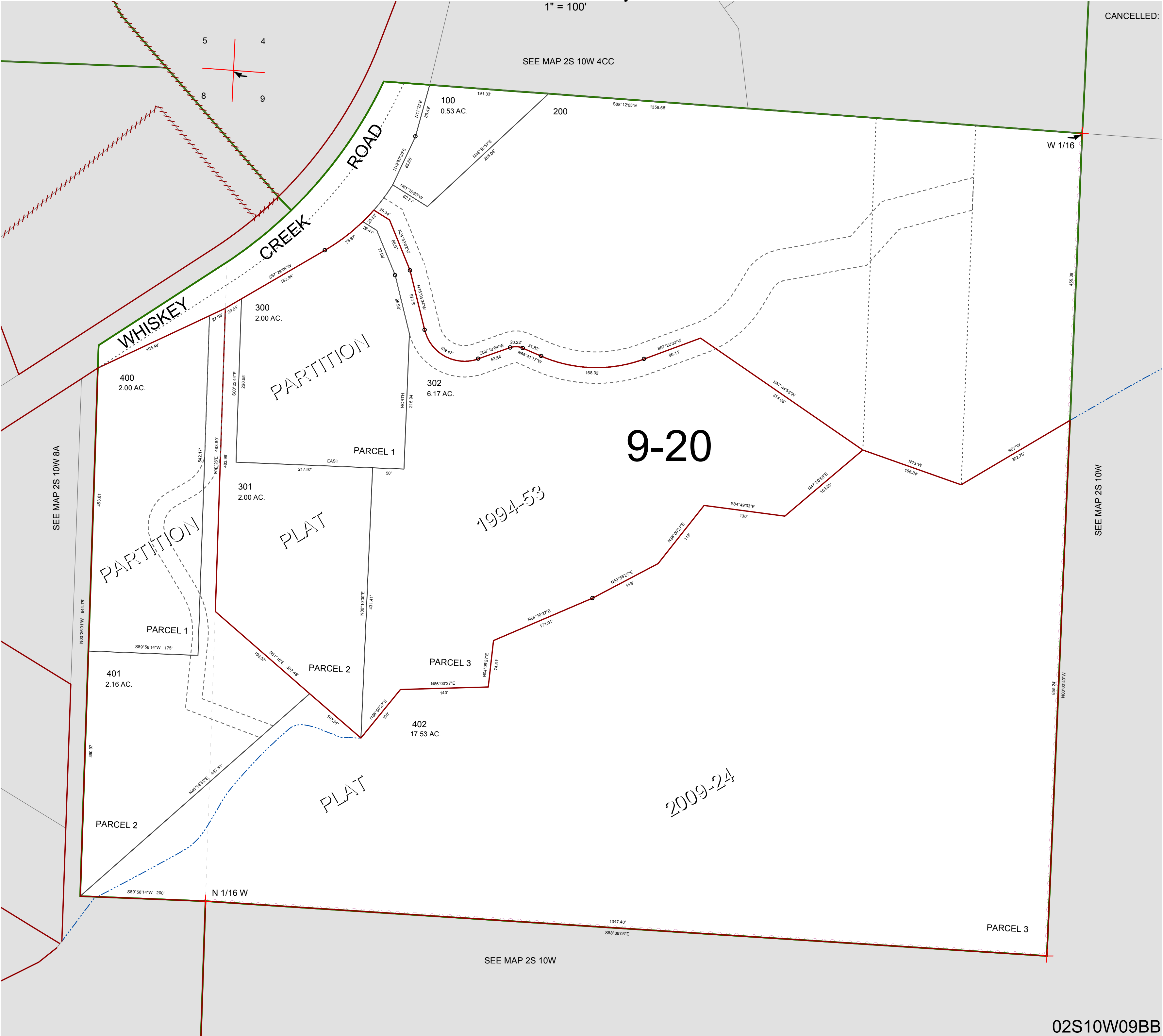


FOR ASSESSMENT AND TAXATION ONLY, NOT SUITABLE FOR
LEGAL, ENGINEERING, OR SURVEY PURPOSES

N.W.1/4 N.W.1/4 SEC.9 T.2S. R.10W. W.M.
Tillamook County
1" = 100'

02S10W09BB

CANCELLED:



02S10W09BB
REVISED 4/10/14, WS