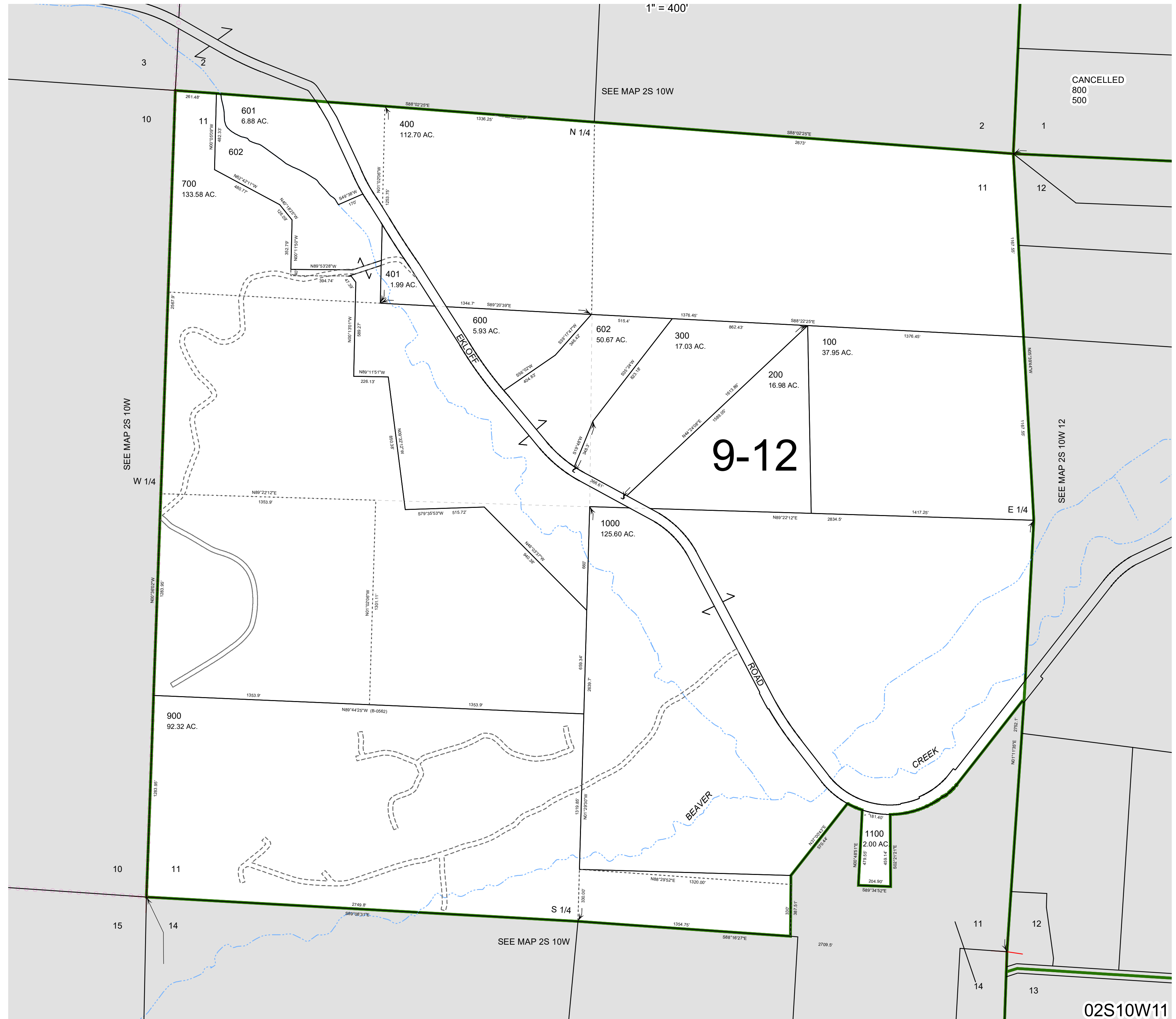


A horizontal number line representing distance in feet. The line starts at 0 and ends at 840. Major tick marks are labeled at 0, 210, 420, 630, and 840. Between each major tick mark, there are three smaller, unlabeled tick marks, dividing each 210-foot segment into four 52.5-foot segments.

TILLAMOOK COUNTY

02S10W11



02S10W11

Revised 7/5/24, WS