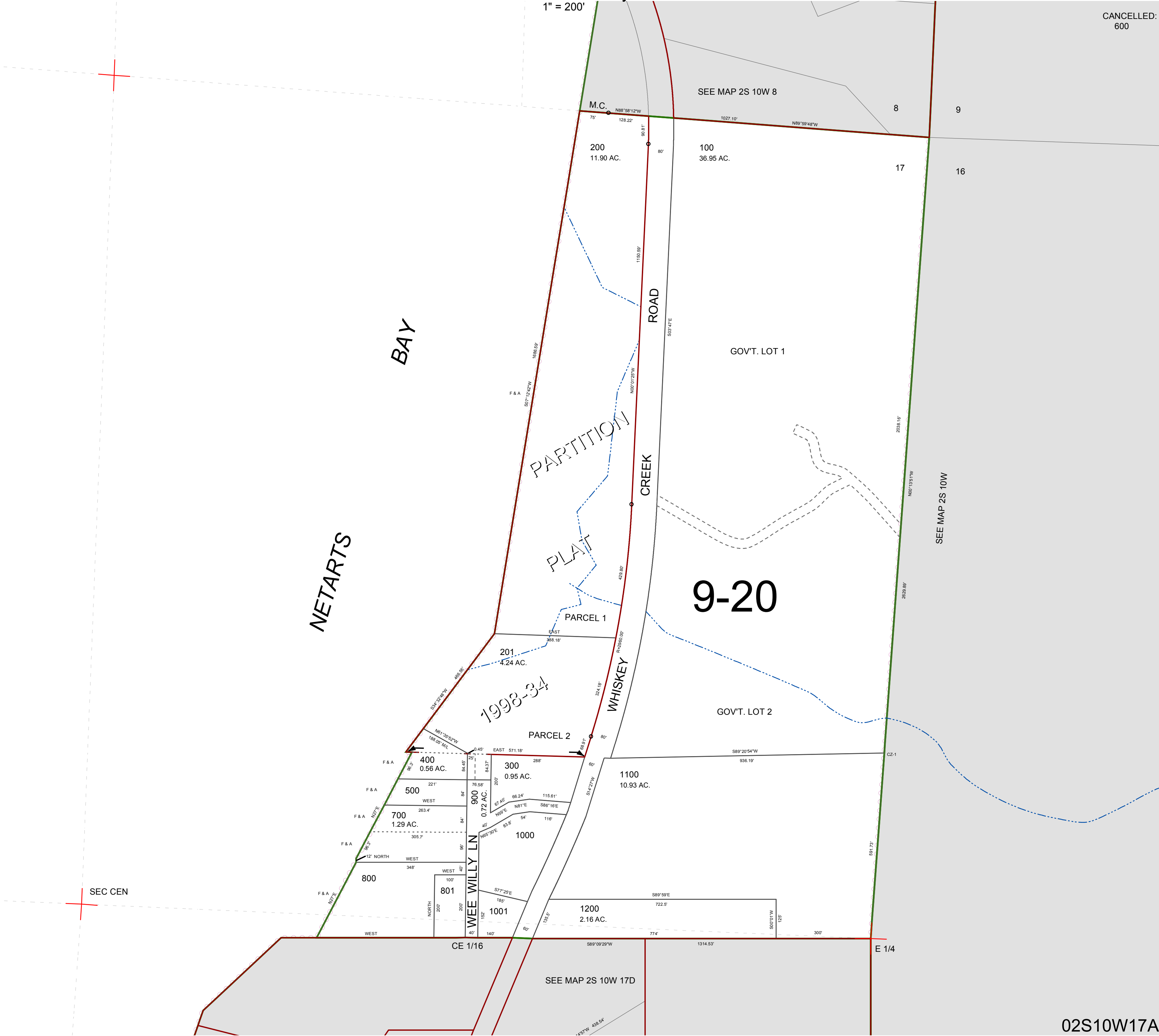


FOR ASSESSMENT AND TAXATION ONLY, NOT SUITABLE FOR
LEGAL, ENGINEERING, OR SURVEY PURPOSES

N.E.1/4 SEC.17 T.2S. R.10W. W.M.
Tillamook County
1" = 200'

02S10W17A

CANCELLED:
600



02S10W17A
REVISED 4/10/14, WS