

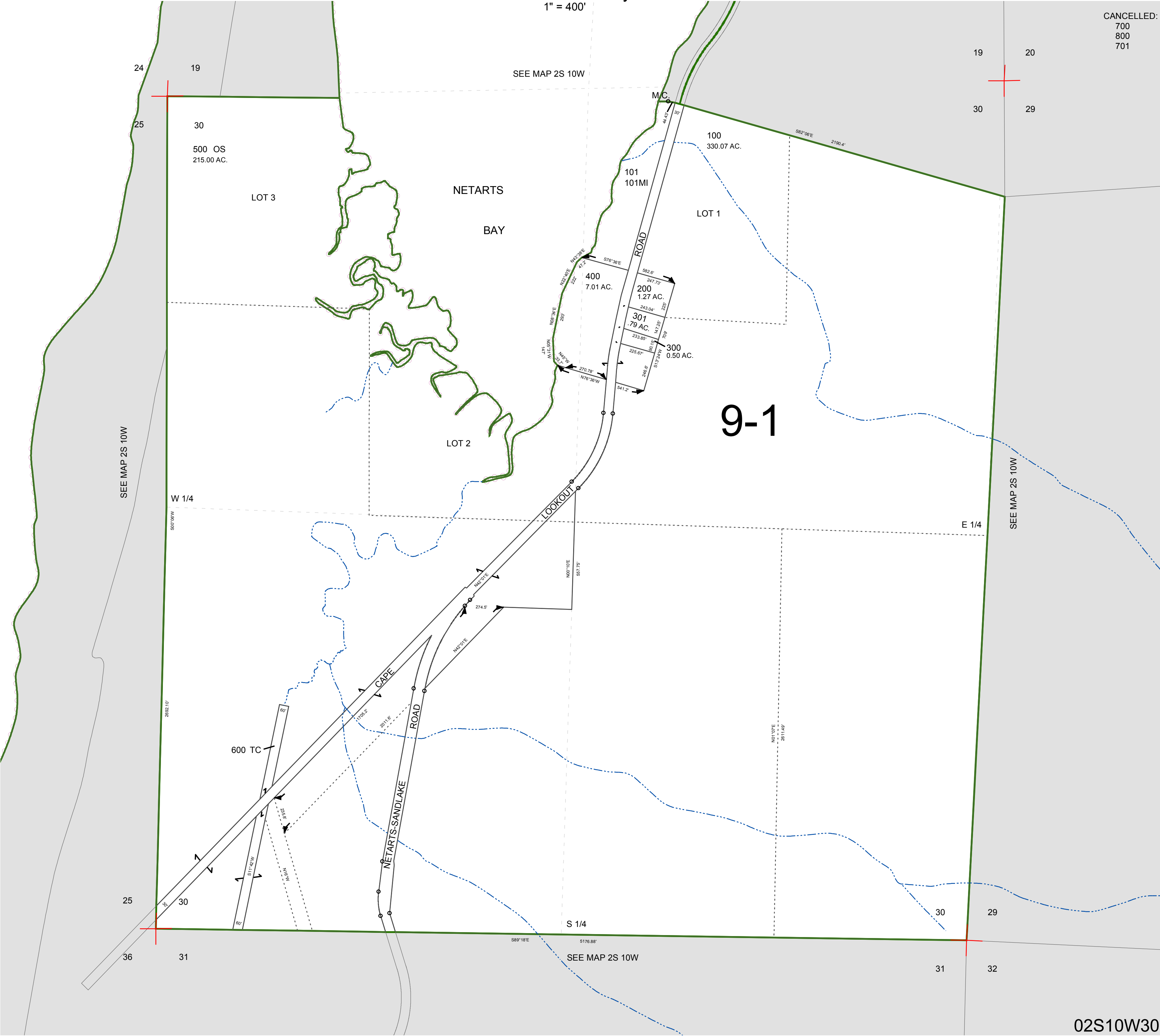
FOR ASSESSMENT AND TAXATION ONLY, NOT SUITABLE FOR
LEGAL, ENGINEERING, OR SURVEY PURPOSES

SECTION 30 T.2S. R.10W. W.M.
Tillamook County

1" = 400'

02S10W30

CANCELLED:
700
800
701



02S10W30

REVISED 2/18/16, WS