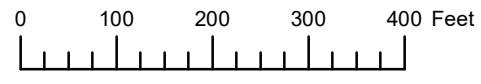


THIS MAP WAS PREPARED FOR ASSESSMENT PURPOSE ONLY

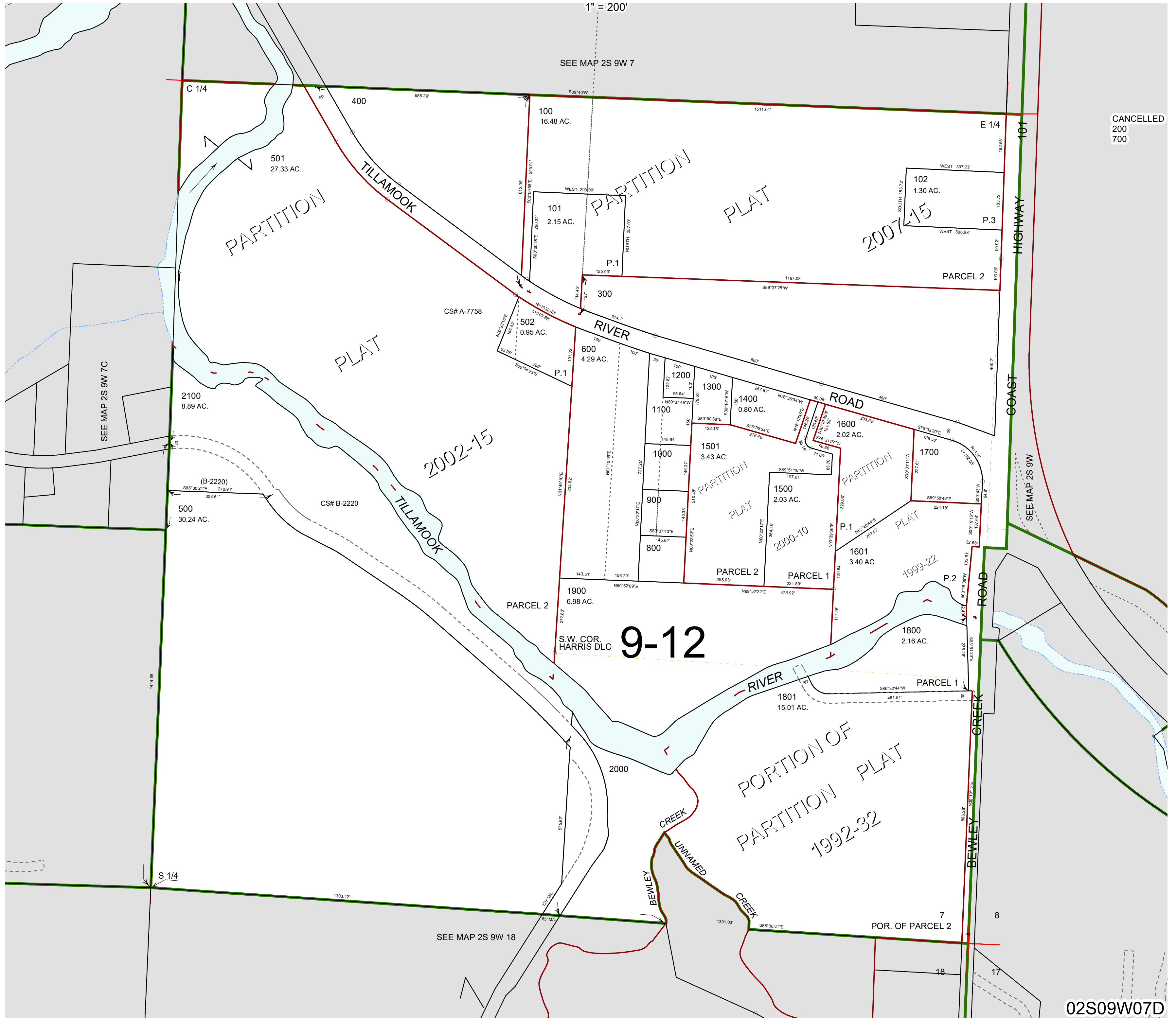


S.E. 1/4 SEC. 7 T.2S. R.9W. W.M.

TILLAMOOK COUNTY

02S09W07D

1" = 200'



CANCELLED
200
700

9-12

02S09W07D

Revised 8/22/19, WS