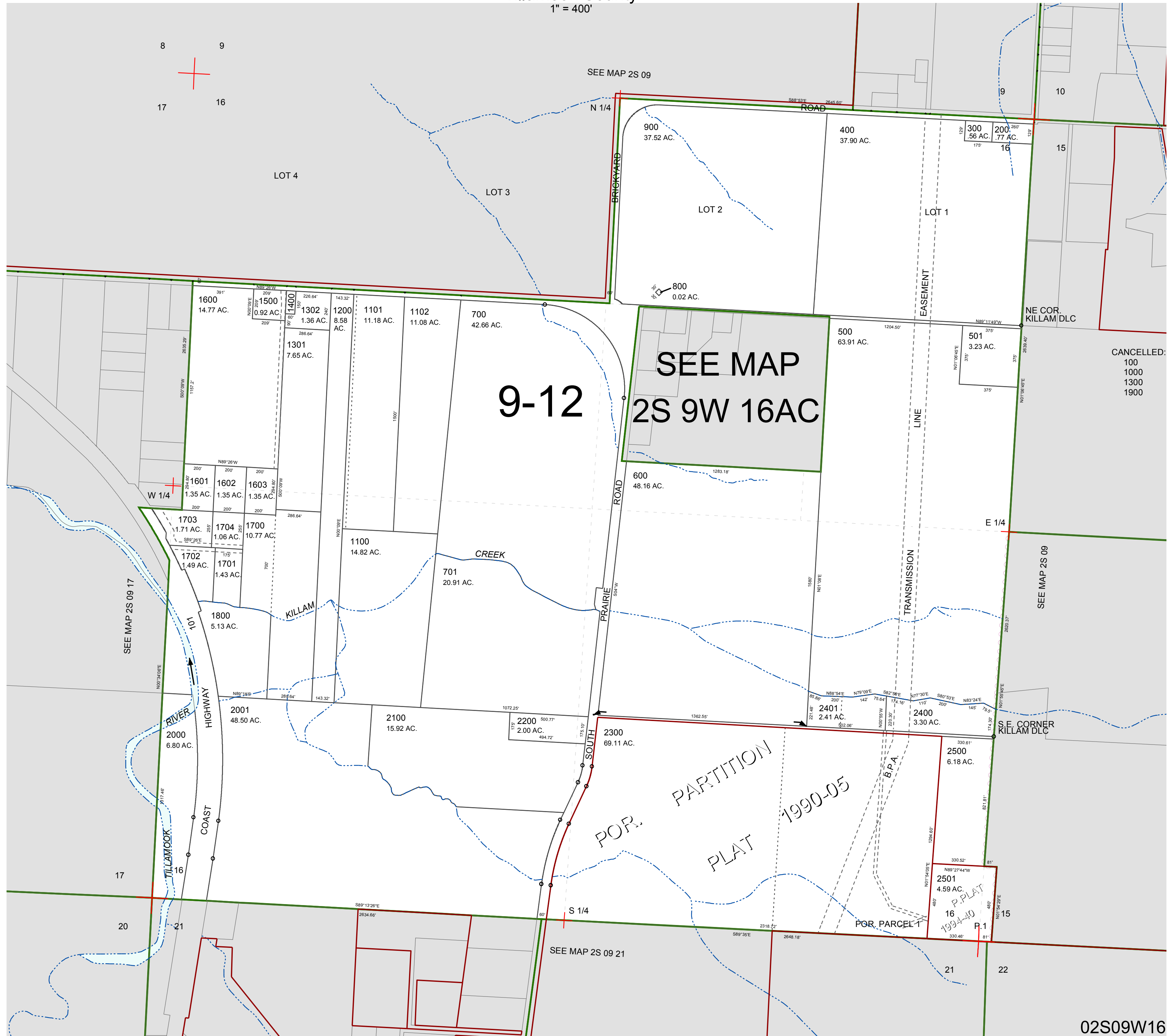


FOR ASSESSMENT AND TAXATION ONLY, NOT SUITABLE FOR LEGAL, ENGINEERING, OR SURVEY PURPOSES

SECTION 16 T.2S. R.9W. W.M.
Tillamook County
1" = 400'

02S09W16



CANCELLED:
100
1000
1300
1900

02S09W16
REVISED 2/18/16, WS