

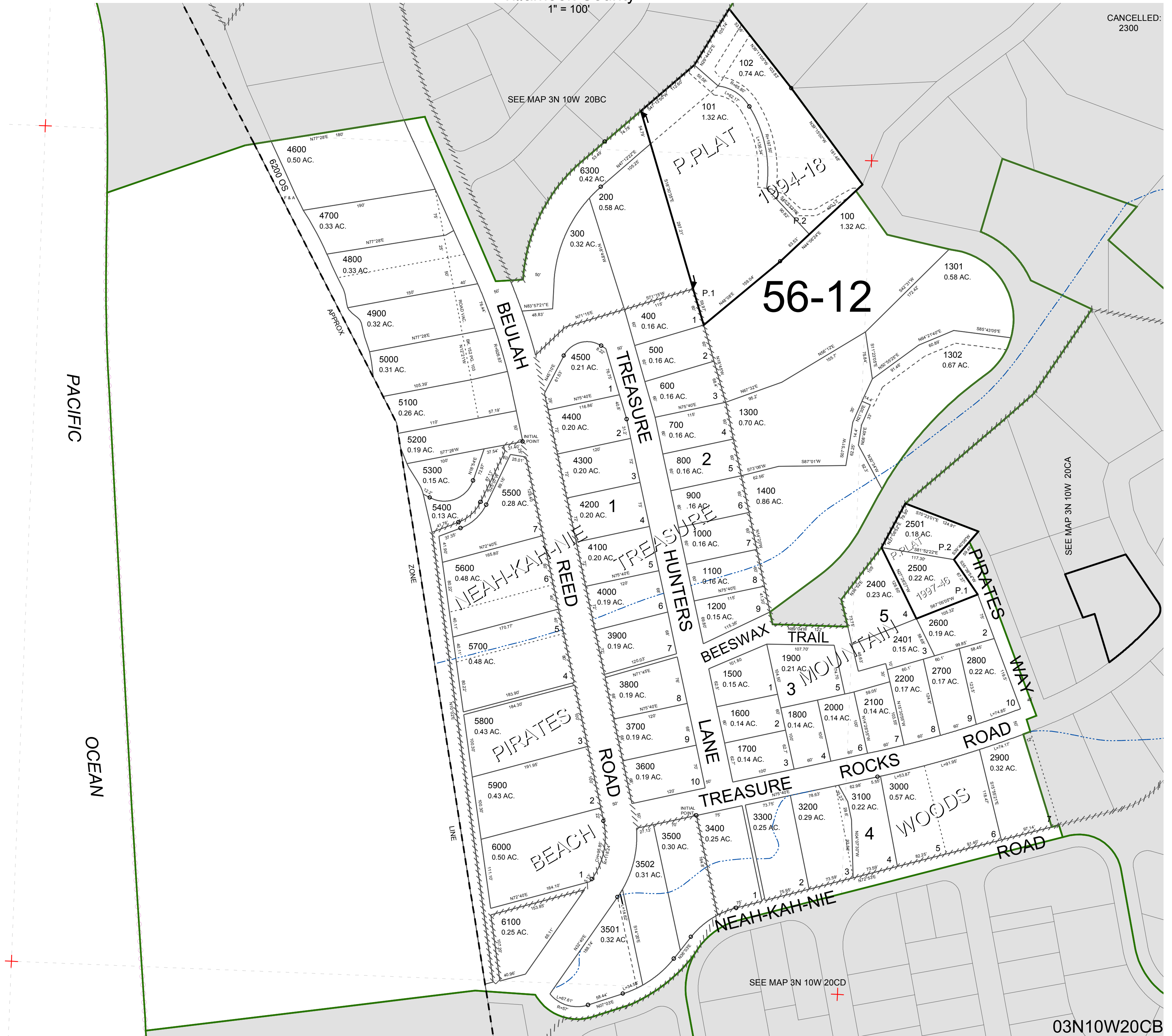
FOR ASSESSMENT AND TAXATION ONLY. NOT SUITABLE FOR LEGAL, ENGINEERING, OR SURVEY PURPOSES

N.W.1/4 S.W.1/4 SEC.20 T.3N. R.10W. W.M.  
Tillamook County

1" = 100'

03N10W20CB

CANCELLED:  
2300



SEE MAP 3N 10W 20CD

03N10W20CB  
REVISED 07/31/12, WS