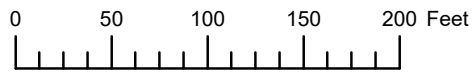


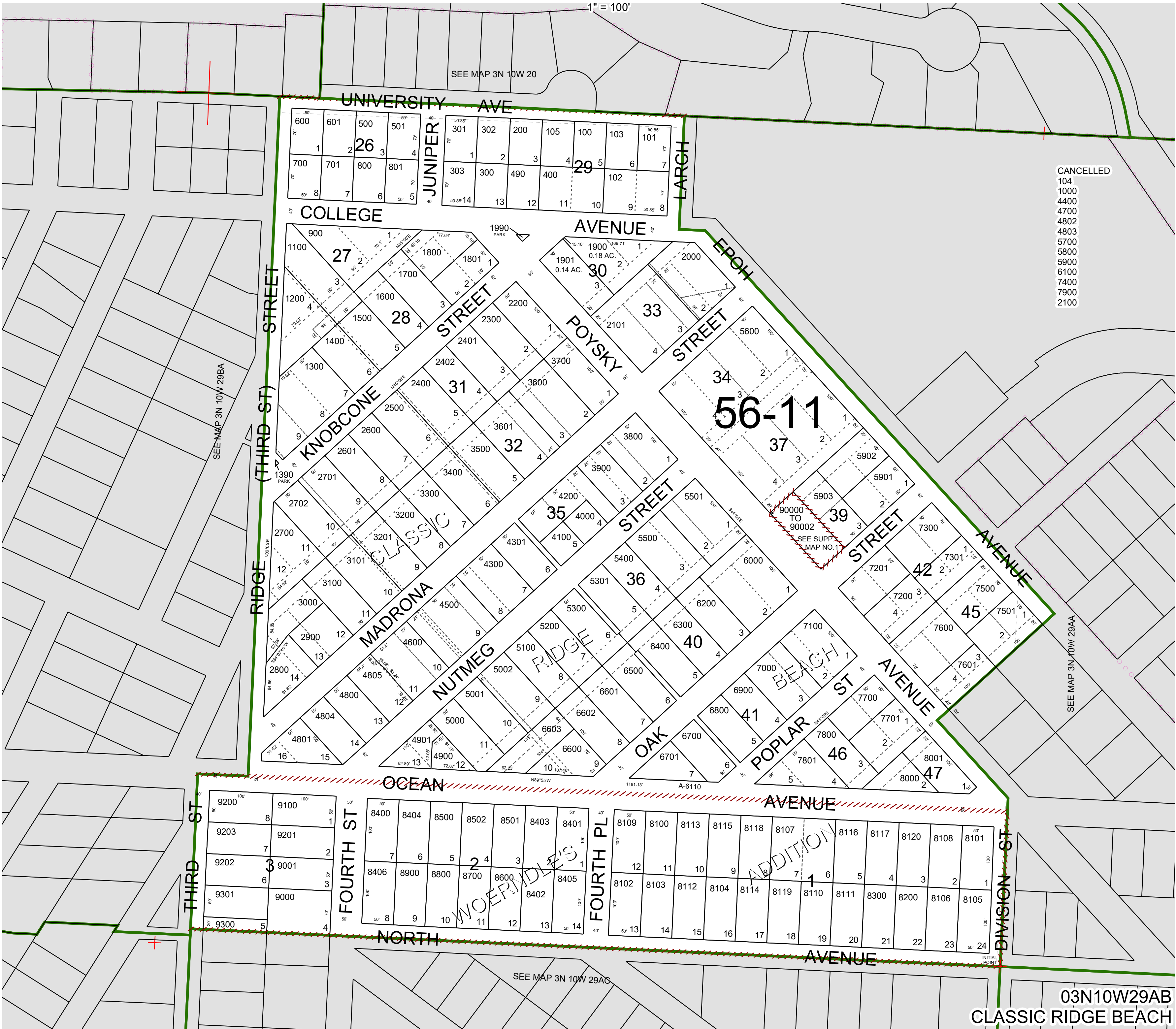
THIS MAP WAS PREPARED FOR  
ASSESSMENT PURPOSE ONLY



N.W.1/4 N.E.1/4 SEC.29 T.3N. R.10W. W.M.

TILLAMOOK COUNTY

03N10W29AB  
CLASSIC RIDGE BEACH



03N10W29AB  
CLASSIC RIDGE BEACH