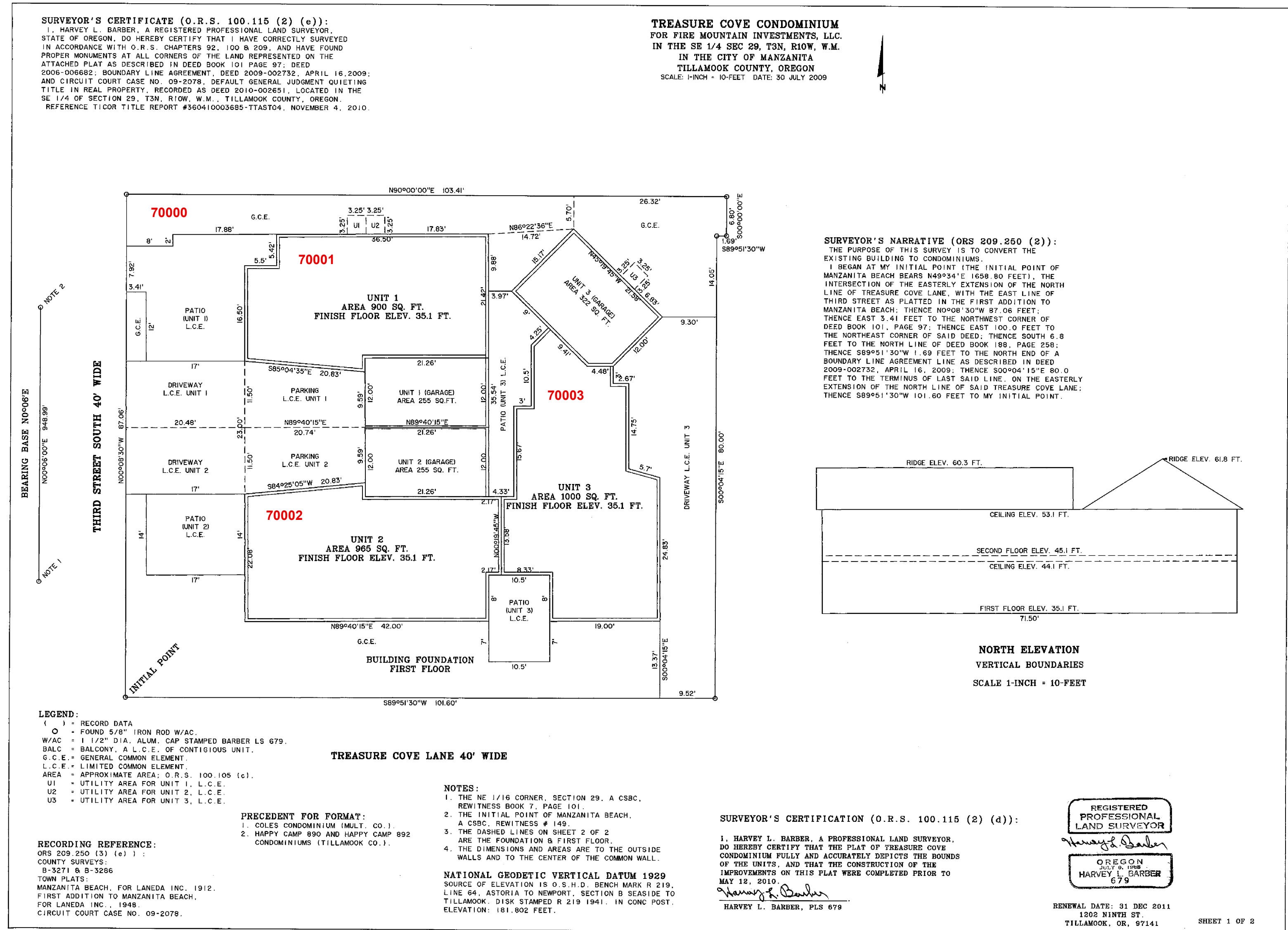


789-0



C-584

C-584

TREASURE COVE CONDOMINIUM
FOR FIRE MOUNTAIN INVESTMENTS, LLC.
IN THE SE 1/4 OF SECTION 29, T3N, R10W, W.M.
TILLAMOOK COUNTY, OREGON
SCALE: 1-INCH = 10-FEET DATE: 30 JULY 2009

APPROVALS: TILLAMOOK COUNTY.

Tim Lutz January 26, 2011
COUNTY ASSESSOR DATE

TAXES HAVE BEEN PAID IN FULL TO JUNE 30, 2011.

Debra L. Donohue Deputy 1/26/11
TAX COLLECTOR DATE

N/A
PLANNING DEPARTMENT DATE

N/A
COUNTY COMMISSIONER DATE

Danny R. McRath JANUARY 26, 2011
COUNTY SURVEYOR DATE

CERTIFICATE OF COUNTY CLERK
STATE OF OREGON S.S.
COUNTY OF TILLAMOOK
I HEREBY CERTIFY THAT THIS CONDOMINIUM PLAT WAS RECEIVED
FOR RECORD ON THE 26 DAY OF Jan. 2011 AT 2:37pm
O'CLOCK AND RECORDED IN PLAT CABINET B 1164-0 OF PLAT
RECORDS OF TILLAMOOK COUNTY, OREGON AS INSTRUMENT # 2011-000491
TASSI O'NEIL, COUNTY CLERK.

BY: G. Marshall, Deputy

CERTIFICATE OF COUNTY CLERK
STATE OF OREGON S.S.
COUNTY OF TILLAMOOK
I, TASSI O'NEIL, DO HEREBY CERTIFY THAT I AM
THE QUALIFIED CLERK OF TILLAMOOK COUNTY, OREGON
AND THAT THIS CONDOMINIUM PLAT IS THE FULL, COMPLETE,
AND TRUE COPY OF THE ORIGINAL PLAT OF SAME, AS
RECORDED IN PLAT CABINET B 1164-0 OF PLAT RECORDS.
TILLAMOOK COUNTY, OREGON. RECORDED Jan 26, 2011.
AT 2:37p M O'CLOCK. AS INSTRUMENT 2011-000491
TASSI O'NEIL
BY: G. Marshall, Deputy

I, HARVEY L. BARBER HEREBY CERTIFY
THAT THIS IS A TRUE AND COMPLETE COPY
OF THE ORIGINAL PLAT.
Harvey L. Barber
HARVEY L. BARBER, PLS 679

REGISTERED
PROFESSIONAL
LAND SURVEYOR
Harvey L. Barber
OREGON
JULY 28, 1989
HARVEY L. BARBER
679
RENEWAL DATE: 31 DEC. 2011
1202 NINTH STREET
TILLAMOOK, OR. 97141

STATE OF OREGON S.S. ON January 11 2011.
COUNTY OF TILLAMOOK Sara J. Pincetich
NOTARY PUBLIC MY COMMISSION EXPIRES
Jan. 31, 2013

OFFICIAL SEAL
TARA L PINCETICH
NOTARY PUBLIC-OREGON
COMMISSION NO. 434943
MY COMMISSION EXPIRES JANUARY 31, 2013

SECOND FLOOR
SCALE: 1-INCH = 10-FEET

70001
UNIT 1
AREA 902 SQ. FT.

70002
UNIT 2
AREA 914 SQ. FT.

70003
UNIT 3
AREA 962 SQ. FT.

18.41' 5.5' 3.5' 36.50' 22.91' 17.24' 24.76' 6.8' 17.24' 24.76' 42.00' 23.00' 4' 20.00' 3' 19.81' 2.67' 5.36' 27.50' 25.17' 8.00' 33.00'

C-584