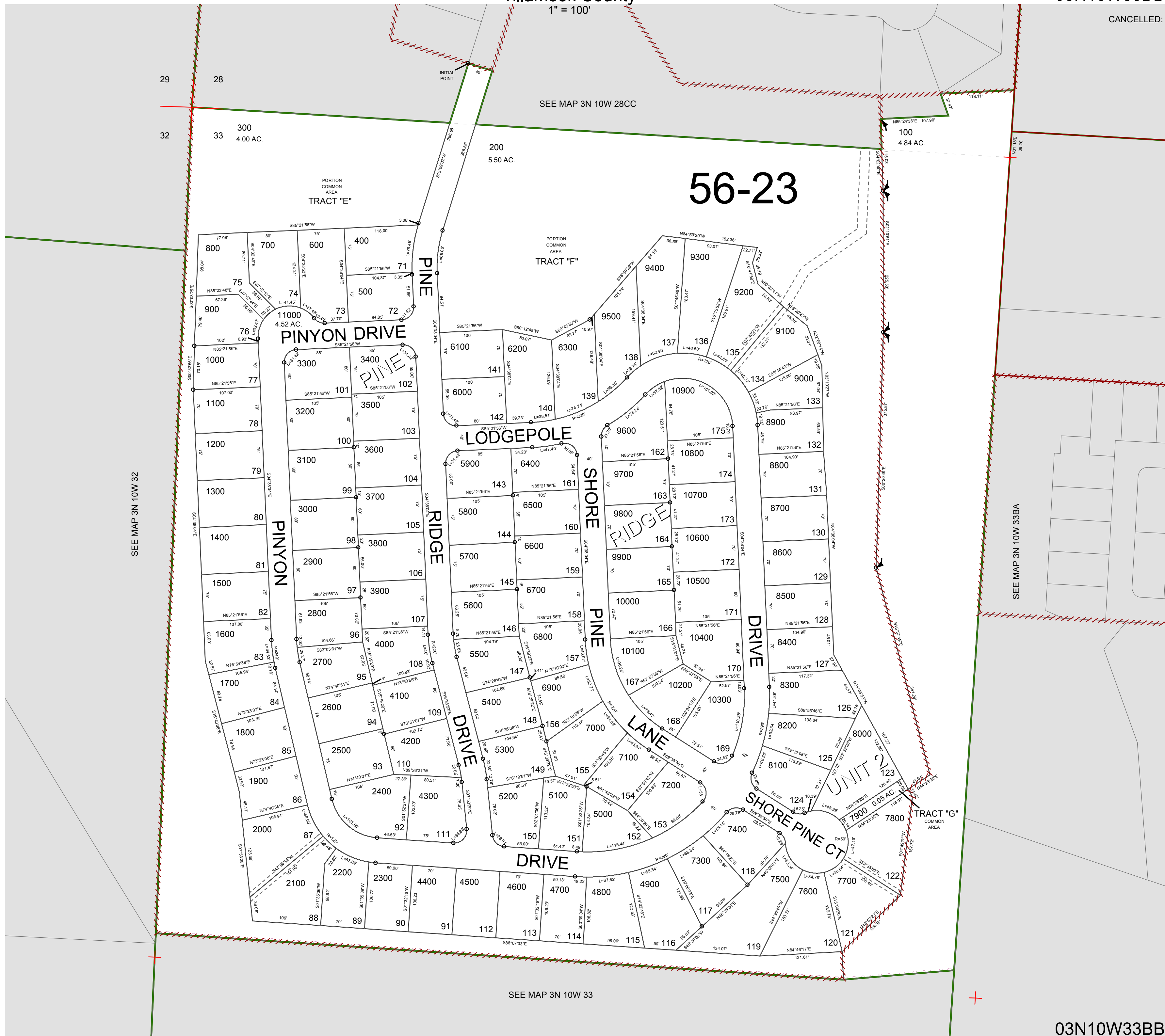


FOR ASSESSMENT AND TAXATION ONLY. NOT SUITABLE FOR LEGAL, ENGINEERING, OR SURVEY PURPOSES

N.W. 1/4 N.W. 1/4 SEC. 33 T.3N. R.10W. W.M.
Tillamook County
1" = 100'

03N10W33BB

CANCELLED:



SEE MAP 3N 10W 32

SEE MAP 3N 10W 33BA

SEE MAP 3N 10W 33

03N10W33BB
REVISED 7/17/15, WS