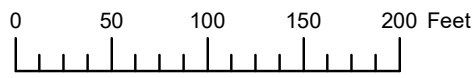


THIS MAP WAS PREPARED FOR
ASSESSMENT PURPOSE ONLY



S.W.1/4 S.W.1/4 SEC.33 T.3N. R.9W. W.M.

TILLAMOOK COUNTY

1" = 8'

03N09W33CC

CANCELLED
300
400

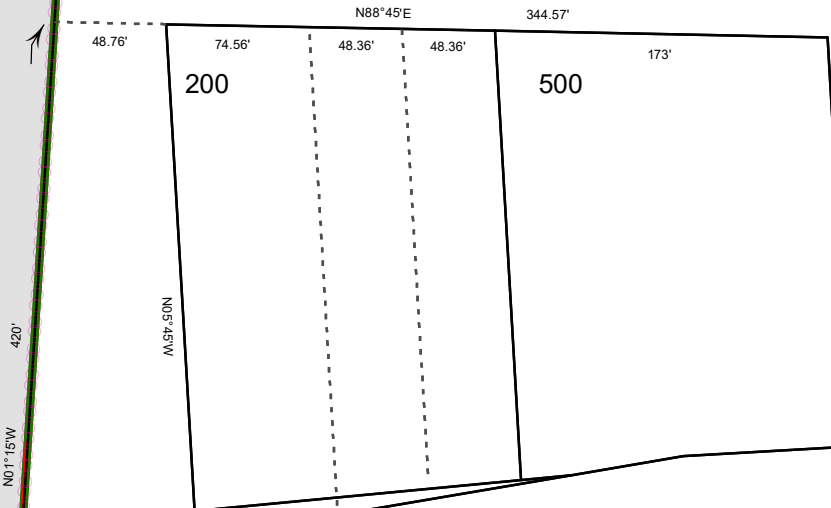
SEE MAP 3N 9W 33

100

56-6

SEE MAP 3N 9W

SEE MAP 3N 9W 33



FOSS

BATTERSON

ROAD

P.T.B.R.R.

32

33

600

1065'

N87°15'E

NORTH

5

4

SEE MAP 2N 9W

03N09W33CC

Revised 5/31/23, WS