

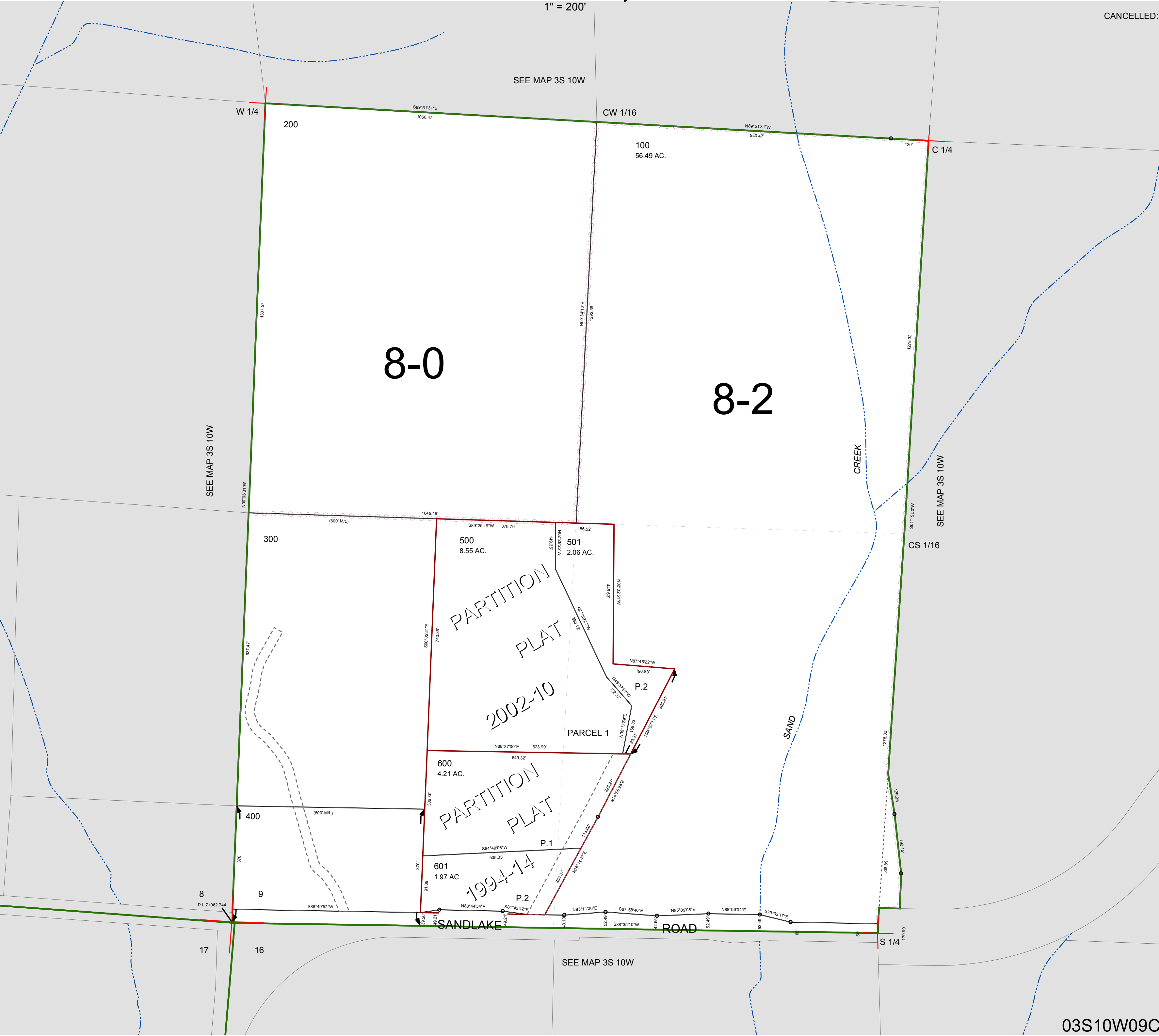
FOR ASSESSMENT AND TAXATION ONLY, NOT SUITABLE FOR  
LEGAL, ENGINEERING, OR SURVEY PURPOSES

S.W.1/4 SEC.9 T.3S. R.10W. W.M.  
Tillamook County

$$1'' = 200'$$

03S10W09C

CANCELLED:



03S10W09C

REVISÉD 6/2/17, WS