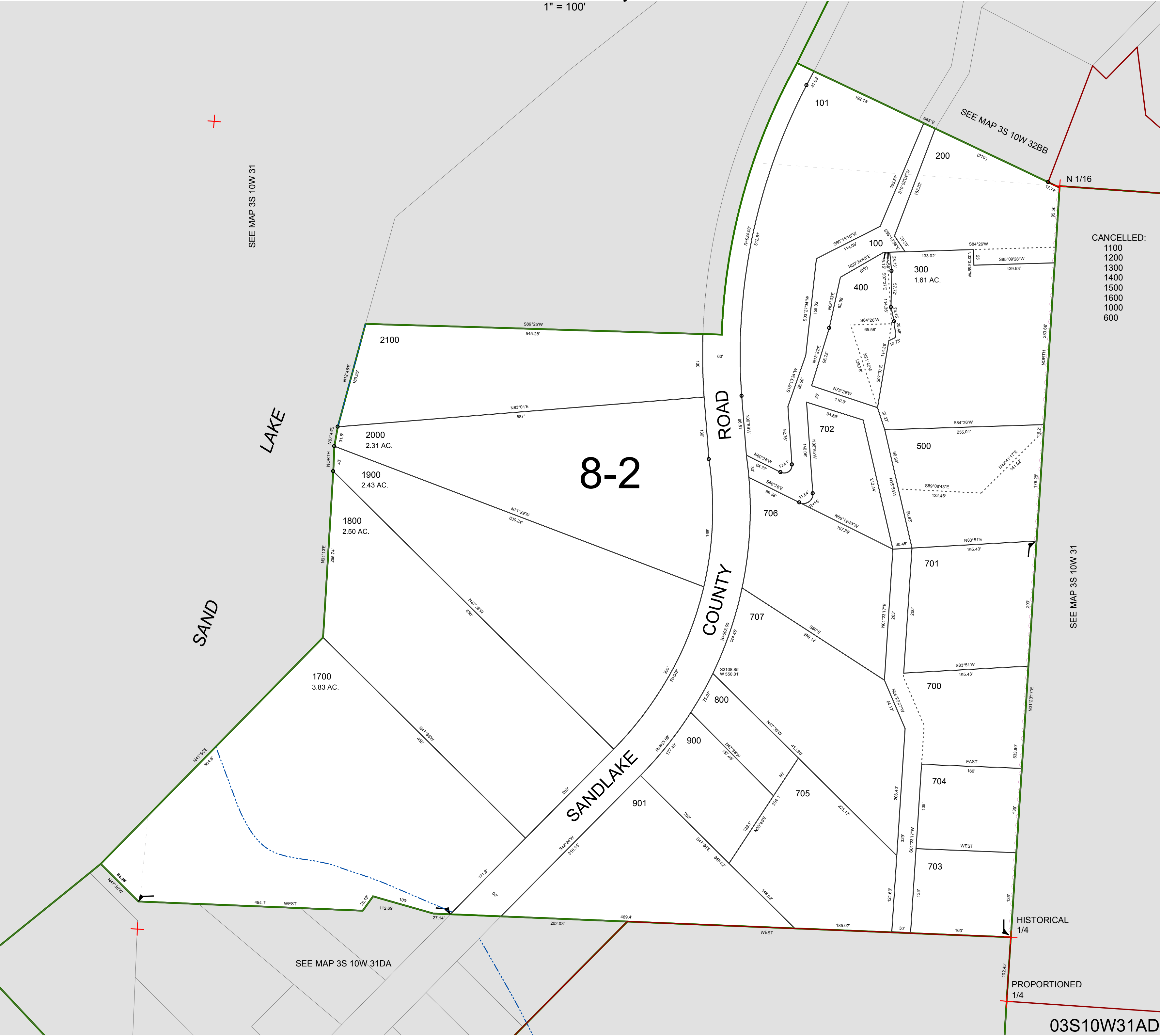


FOR ASSESSMENT AND TAXATION ONLY, NOT SUITABLE FOR
LEGAL, ENGINEERING, OR SURVEY PURPOSES

S.E.1/4 N.E.1/4 SEC.31 T.3S. R.10W. W.M.
Tillamook County

1" = 100'

03S10W31AD



03S10W31AD

REVISED 6/16/17, WS