

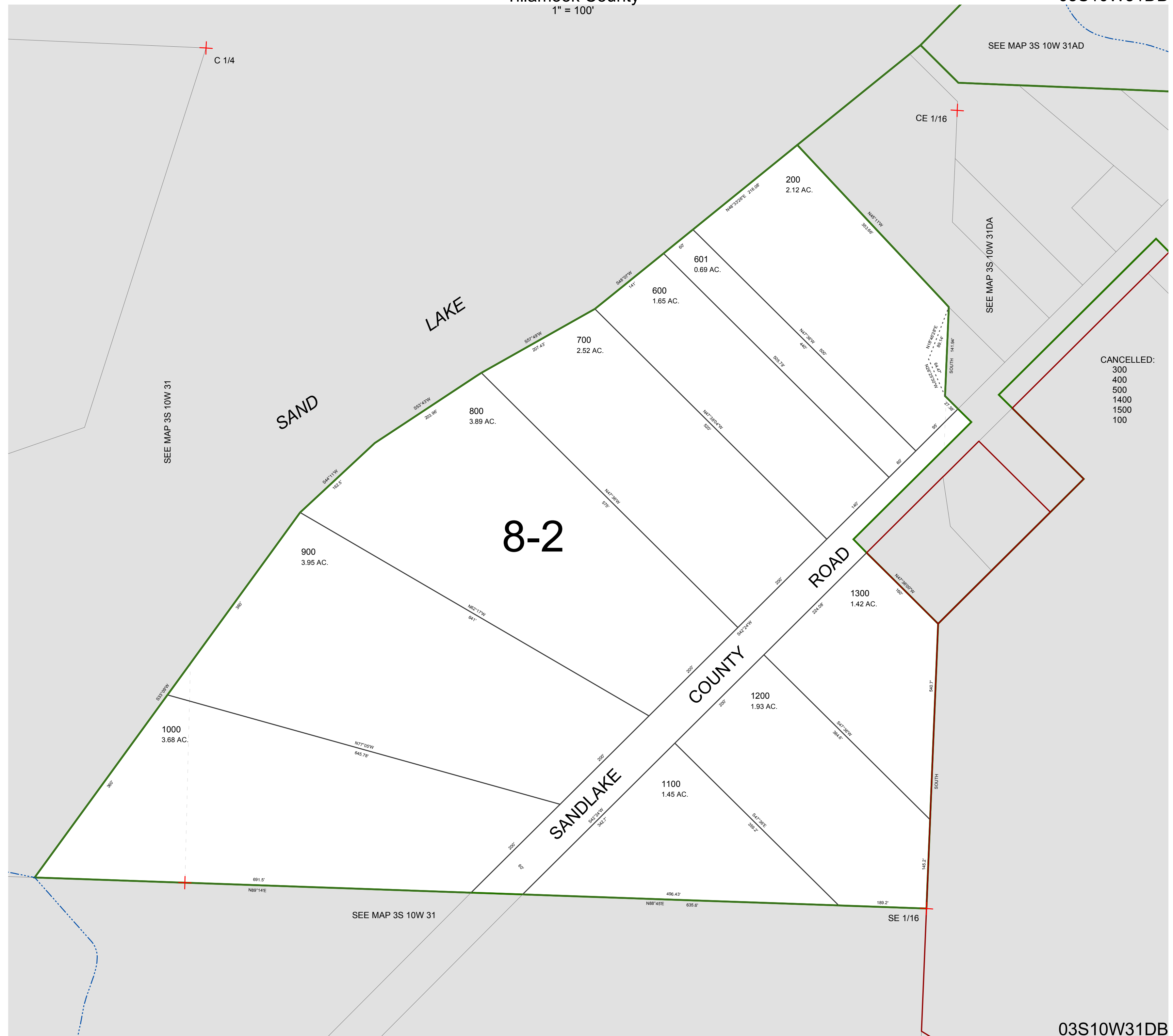
FOR ASSESSMENT AND TAXATION ONLY, NOT SUITABLE FOR  
LEGAL, ENGINEERING, OR SURVEY PURPOSES

N.W.1/4 S.E.1/4 SEC.31 T.3S. R.10W. W.M.

Tillamook County

$$1'' = 100'$$

03S10W31DB



03S10W31DB

REVISÉ 6/16/17, WS