

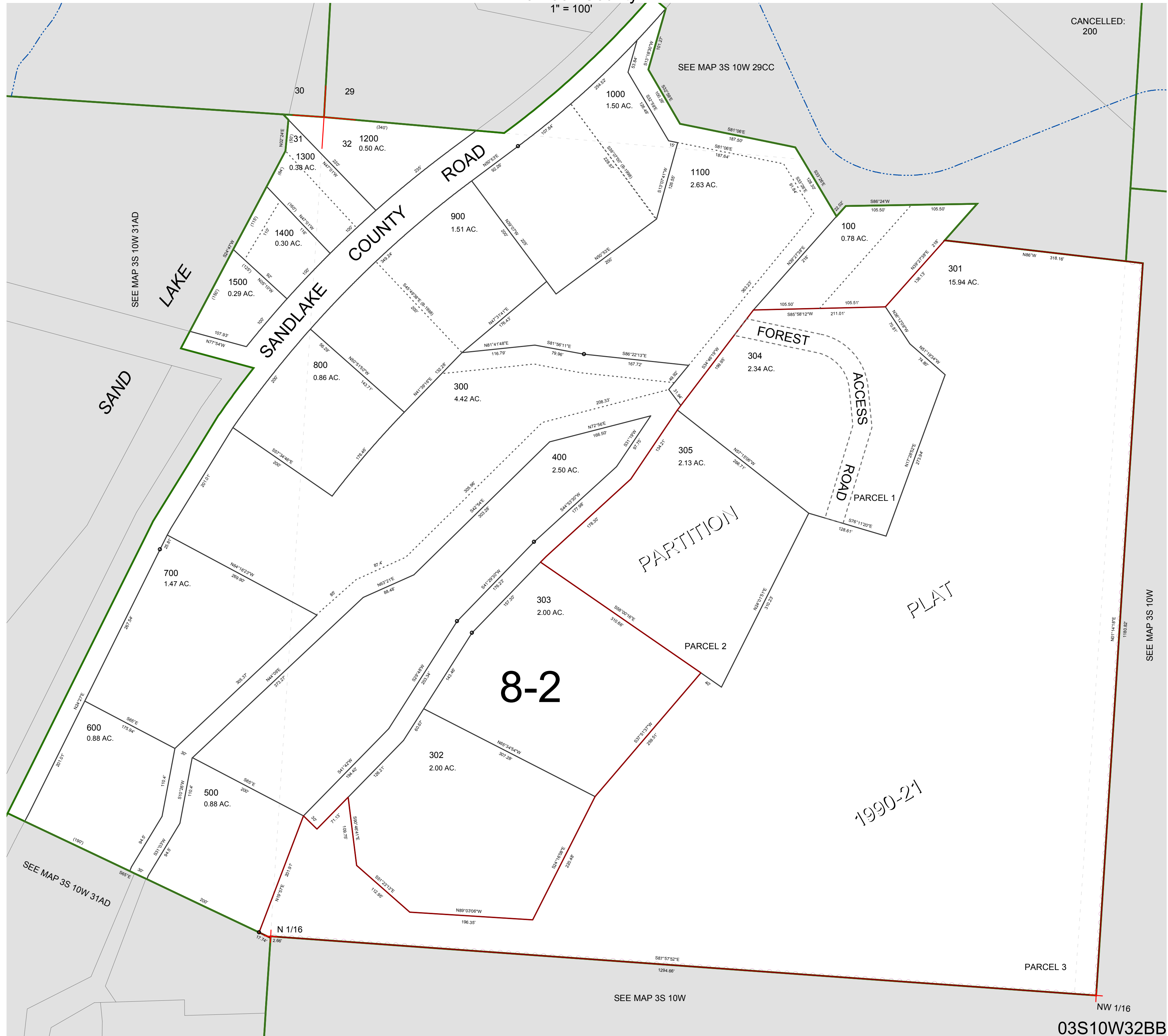
FOR ASSESSMENT AND TAXATION ONLY, NOT SUITABLE FOR
LEGAL, ENGINEERING, OR SURVEY PURPOSES

N.W.1/4 N.W.1/4 SEC.32 T.3S. R.10W. W.M.
Tillamook County

$$1'' = 100$$

03S10W32BB

CANCELLED:
200



03S10W32BB
REVISED 6/16/17, WS

REVISED 6/16/17, WS