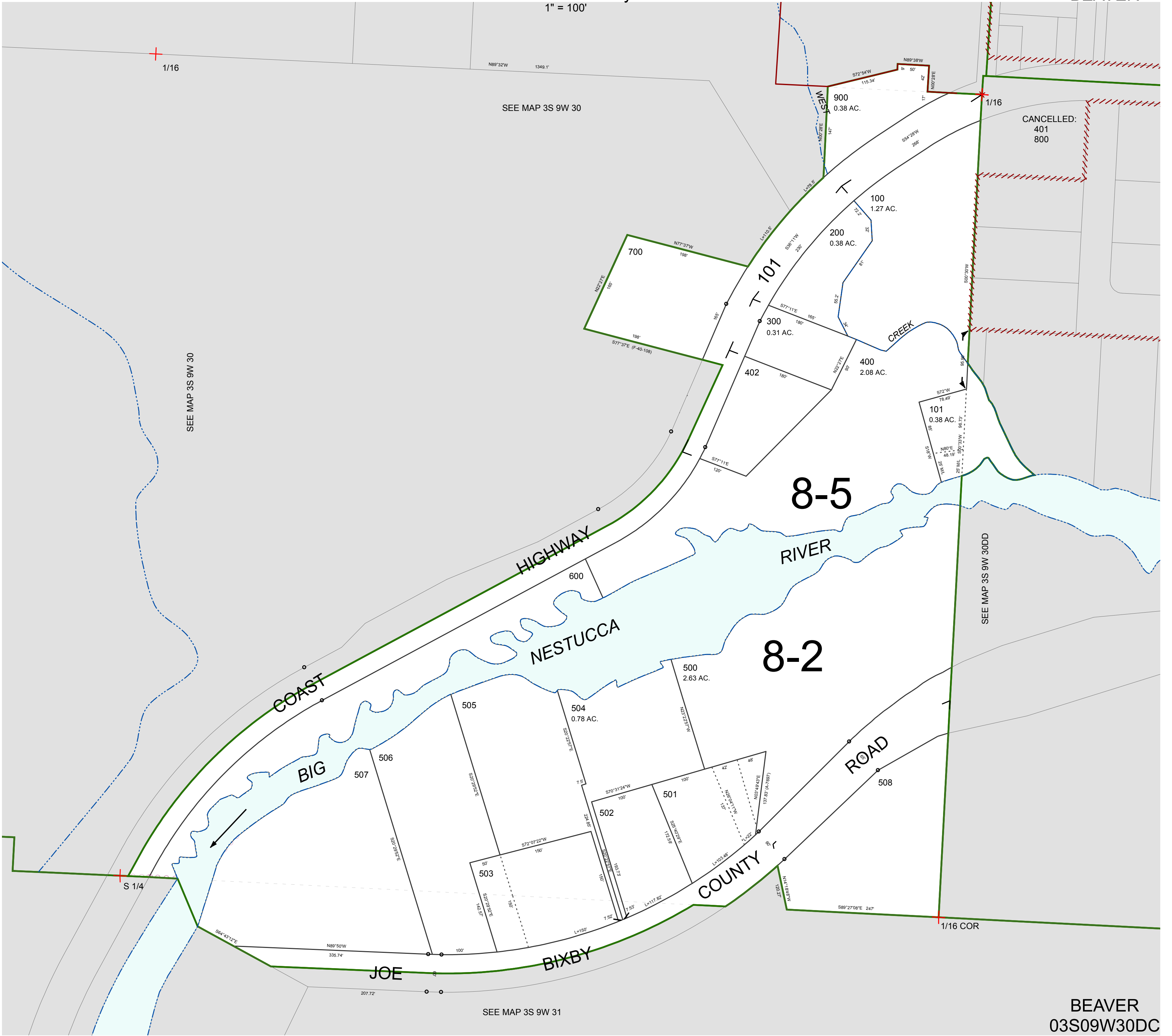


FOR ASSESSMENT AND TAXATION ONLY, NOT SUITABLE FOR
LEGAL, ENGINEERING, OR SURVEY PURPOSES

S.W.1/4 S.E.1/4 SEC.30 T.3S. R.9W. W.M.
Tillamook County

$$1'' = 100'$$

03S09W30DC
BEAVER



BEAVER
03S09W30DC
REVISED 6/16/17, WS