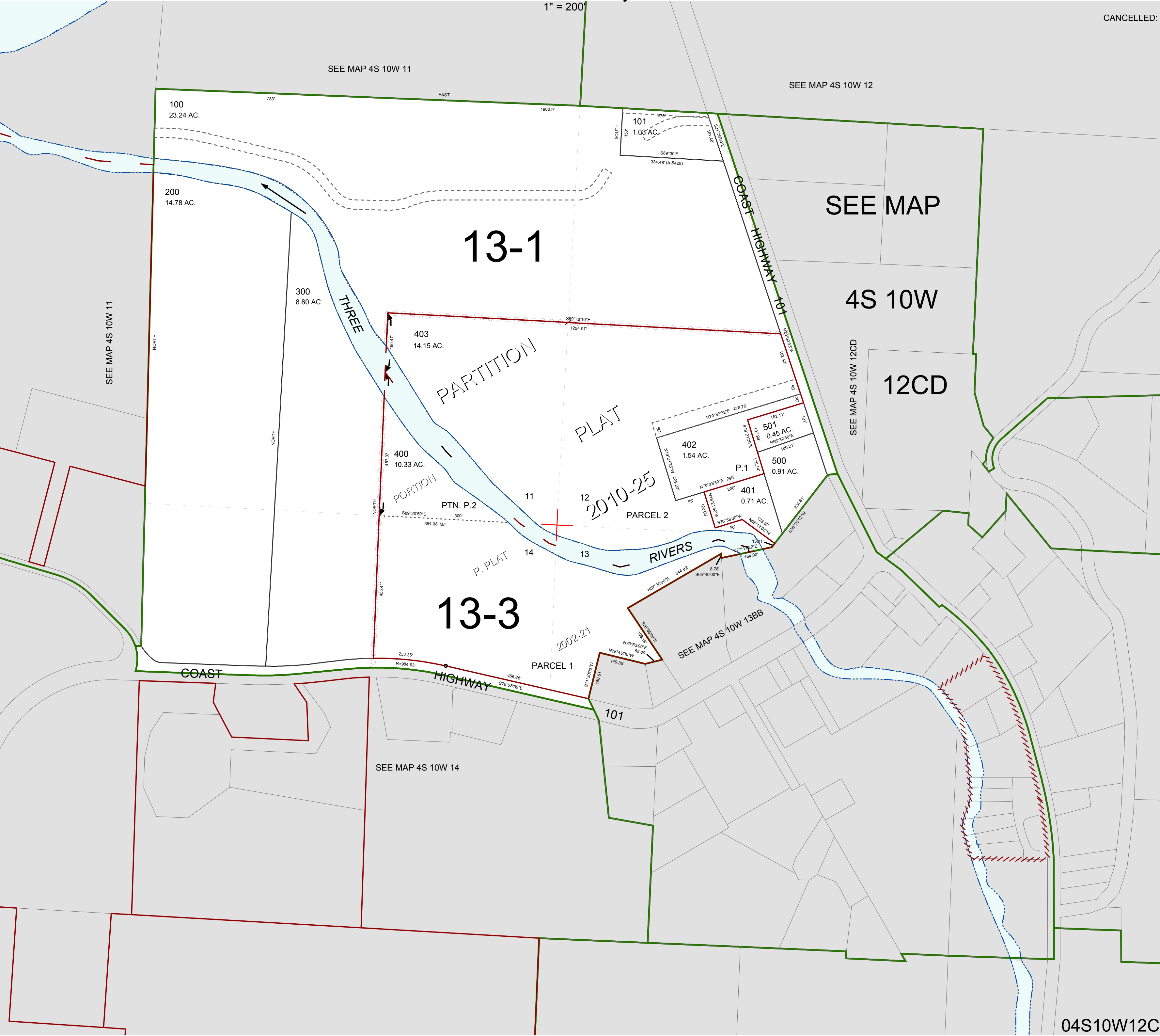


FOR ASSESSMENT AND TAXATION ONLY, NOT SUITABLE FOR
LEGAL, ENGINEERING, OR SURVEY PURPOSES

S.W.1/4 SEC.12 T.4S. R.10W. W.M.
Tillamook County

04S10W12C

CANCELLED:



04S10W12C
REVISED 6/16/17, WS