

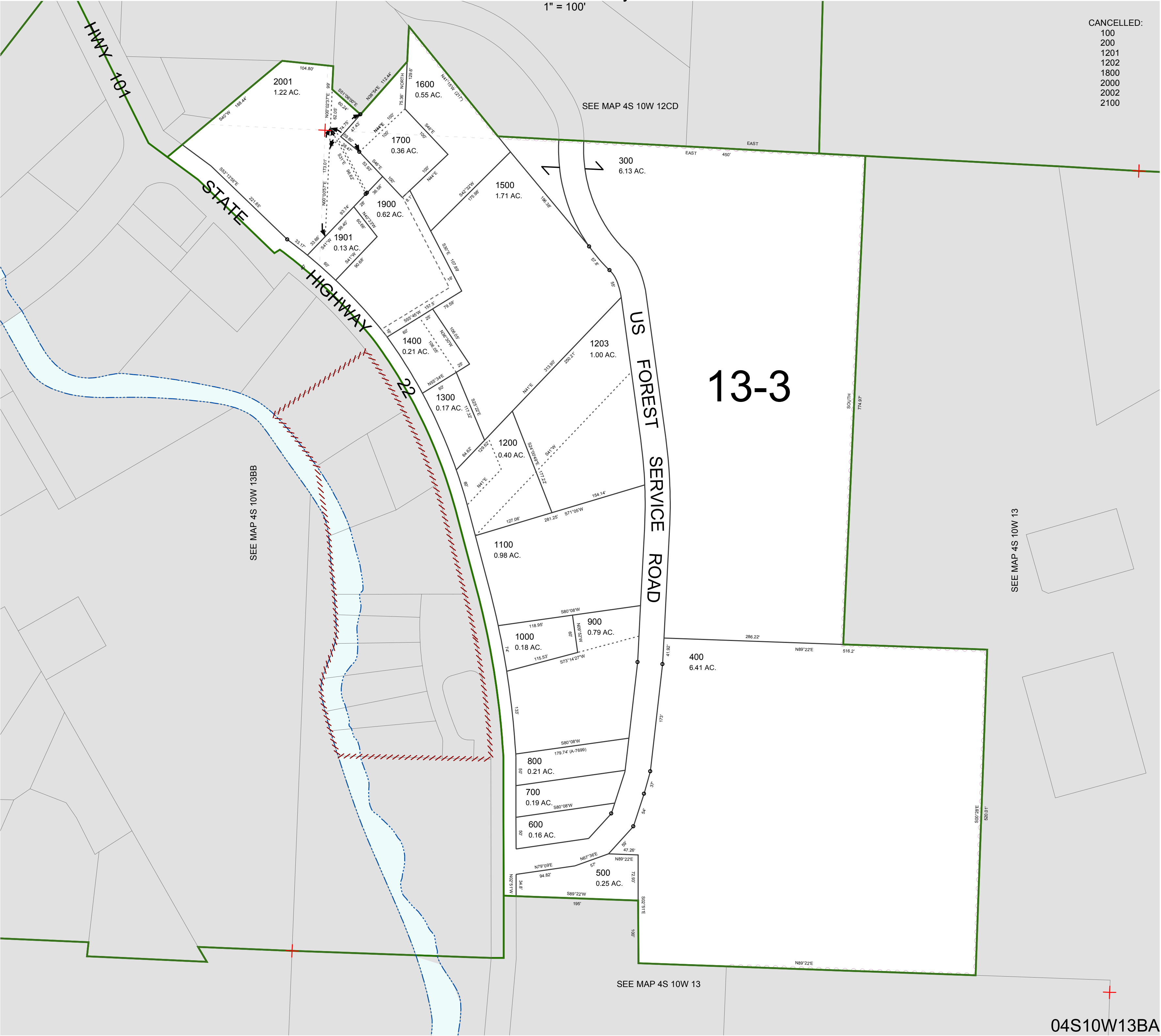
FOR ASSESSMENT AND TAXATION ONLY, NOT SUITABLE FOR  
LEGAL, ENGINEERING, OR SURVEY PURPOSES

N.E.1/4 N.W.1/4 SEC.13 T.4S. R.10W. W.M.  
Tillamook County

04S10W13BA

1" = 100'

CANCELLED:  
100  
200  
1201  
1202  
1800  
2000  
2002  
2100



04S10W13BA  
REVISED 6/16/17, WS