

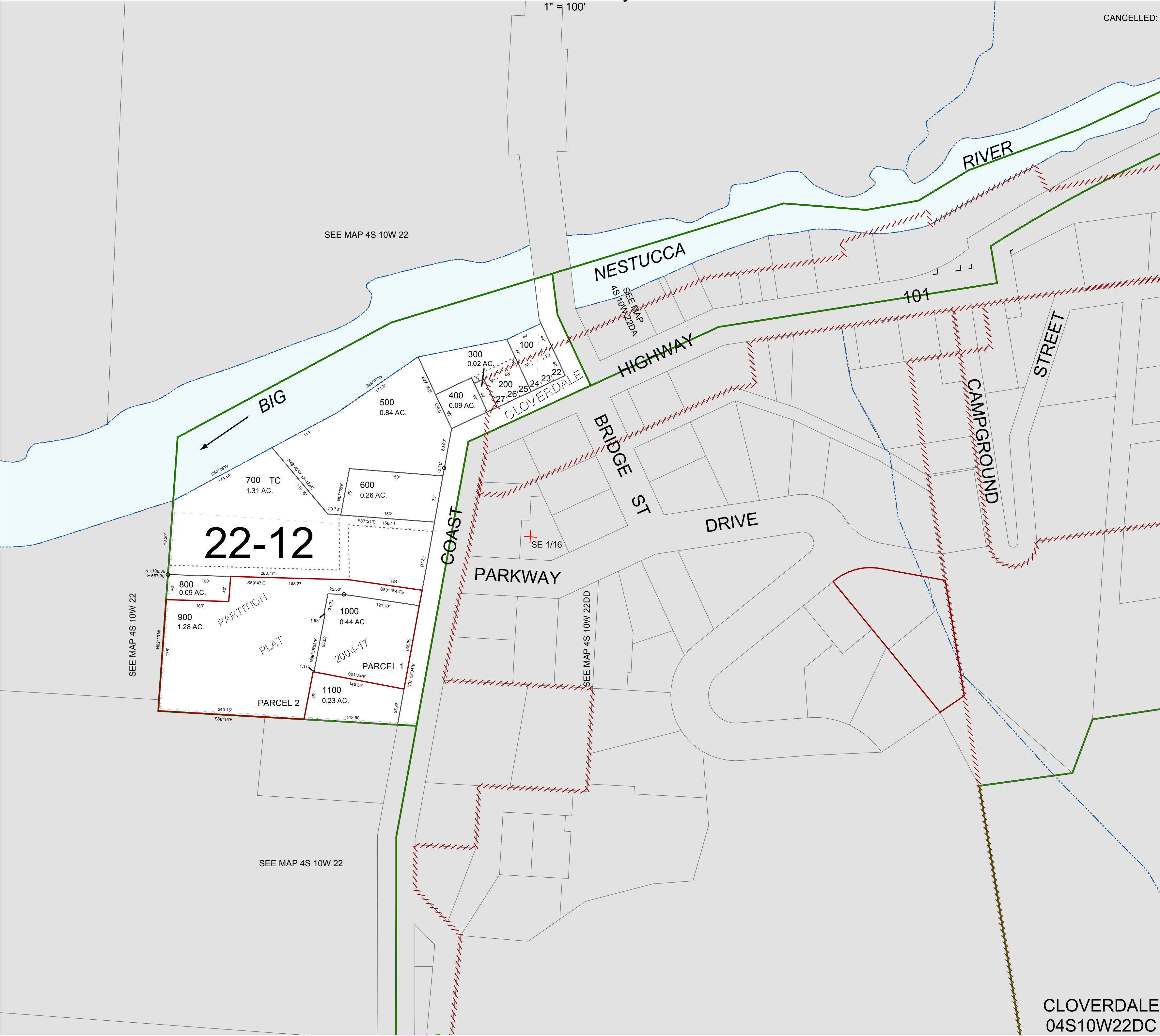
FOR ASSESSMENT AND TAXATION ONLY, NOT SUITABLE FOR  
LEGAL, ENGINEERING, OR SURVEY PURPOSES

S.W.1/4 S.E.1/4 SEC.22 T.4S. R.10W. W.M.  
Tillamook County

1" = 100'

04S10W22DC  
CLOVERDALE

CANCELLED:



CLOVERDALE  
04S10W22DC

REVISED 2/18/16, WS