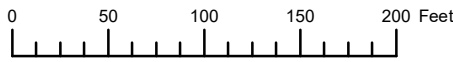


THIS MAP WAS PREPARED FOR  
ASSESSMENT PURPOSE ONLY



N.W.1/4 S.W.1/4 SEC.23 T.4S. R.10W. W.M.

TILLAMOOK COUNTY

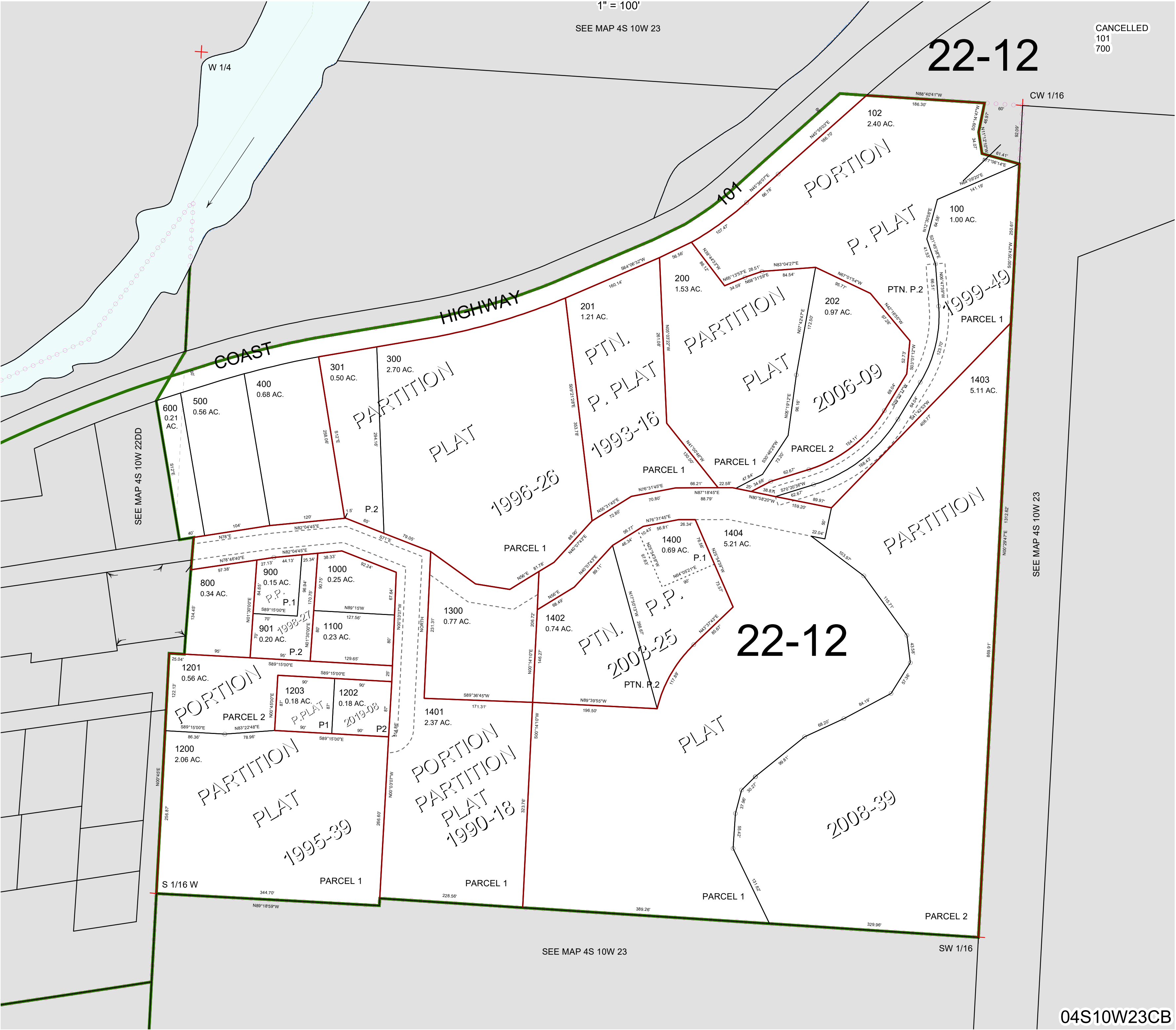
04S10W23CB

1" = 100'

SEE MAP 4S 10W 23

CANCELLED  
101  
700

22-12



04S10W23CB

Revised 5/29/24, WS