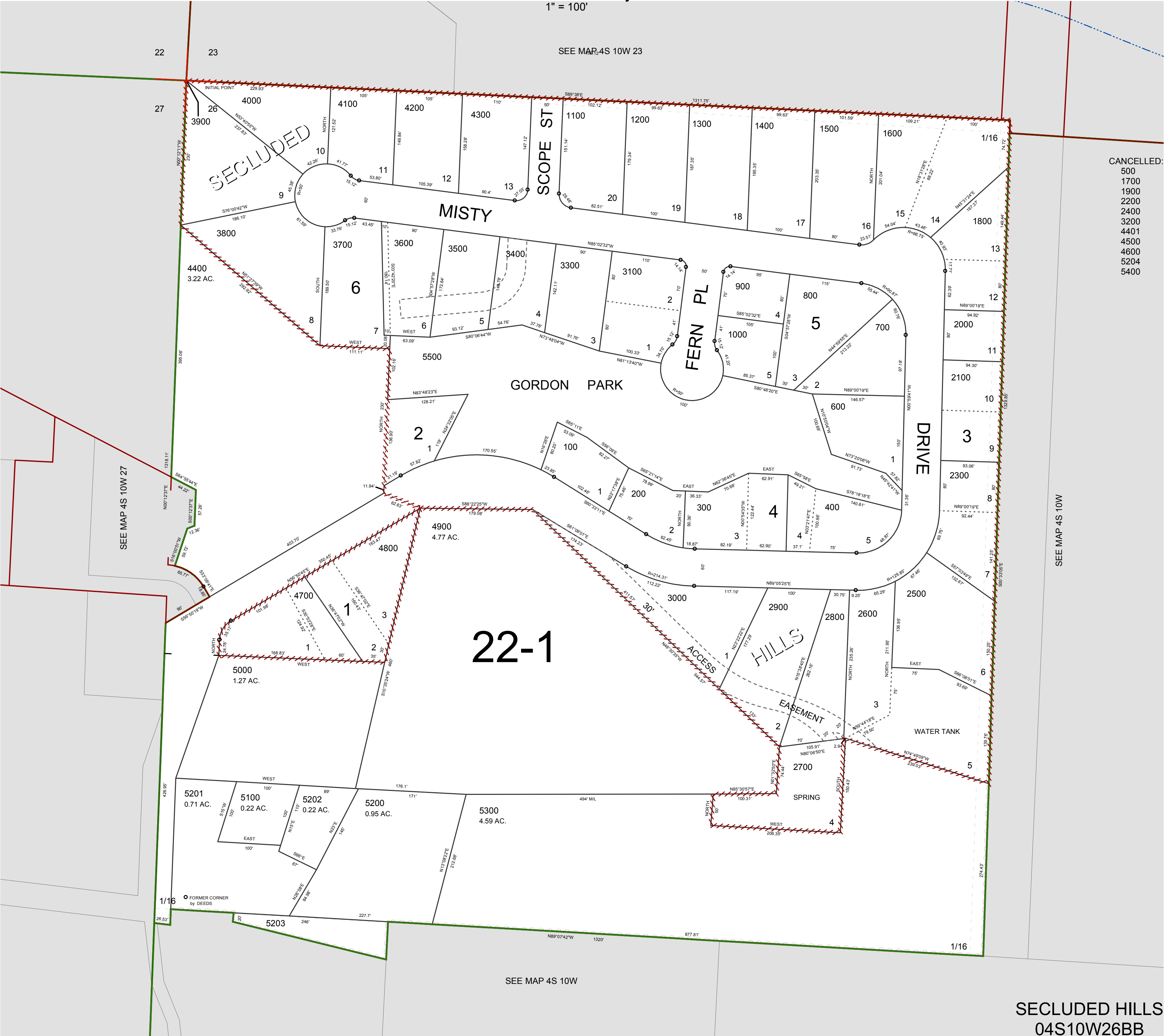


FOR ASSESSMENT AND TAXATION ONLY, NOT SUITABLE FOR  
LEGAL, ENGINEERING, OR SURVEY PURPOSES

N.W.1/4 N.W.1/4 SEC.26 T.4S. R.10W. W.M.  
Tillamook County

$$1'' = 100'$$

04S10W26BB  
SECLUDED HILLS



CANCELLED:

|      |
|------|
| 500  |
| 1700 |
| 1900 |
| 2200 |
| 2400 |
| 3200 |
| 4401 |
| 4500 |
| 4600 |
| 5204 |
| 5400 |

SECLUDED HILLS  
04S10W26BB

REVISÉD 6/16/17, WS