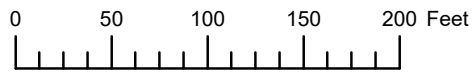


THIS MAP WAS PREPARED FOR
ASSESSMENT PURPOSE ONLY

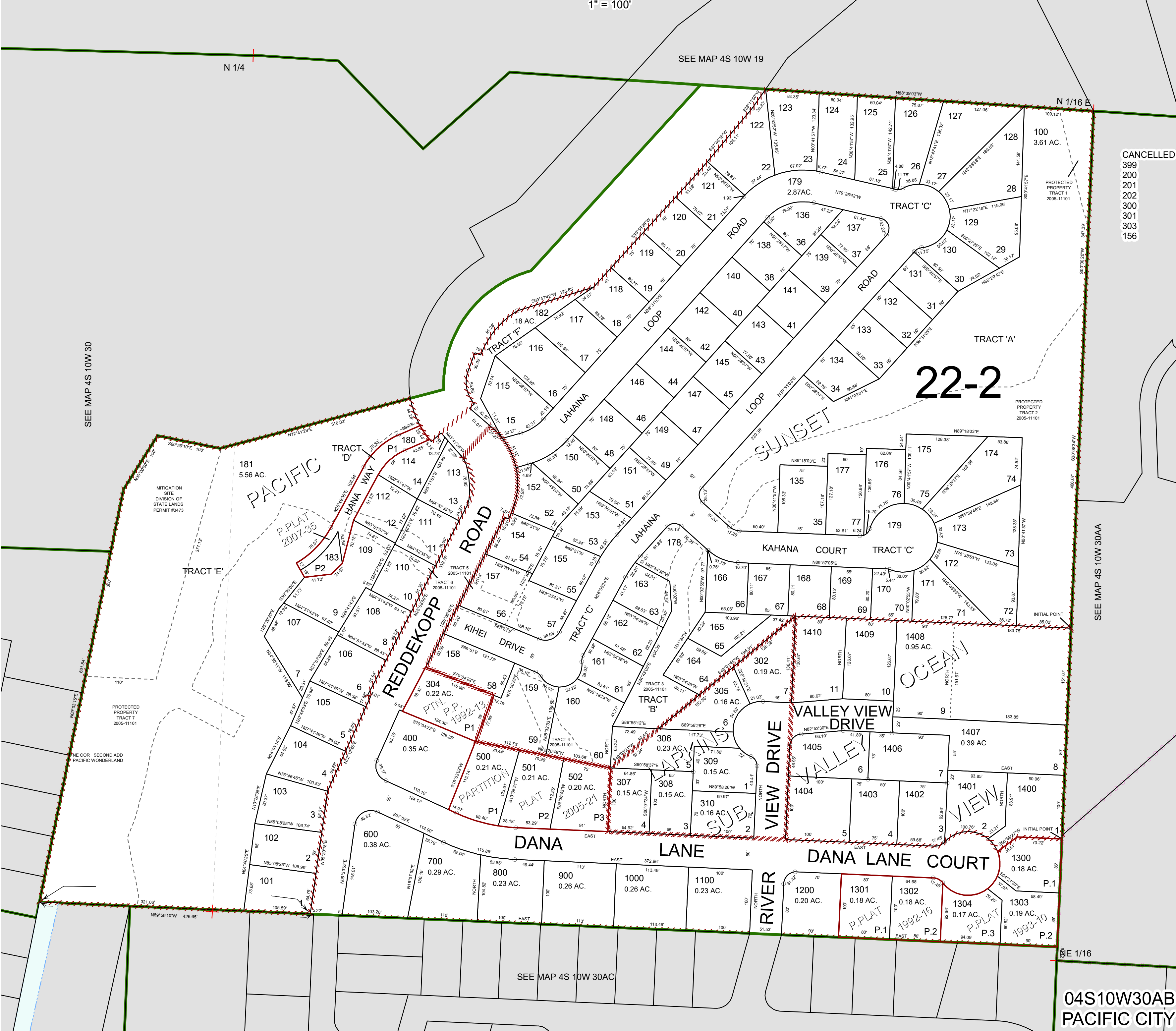


N.W.1/4 N.E.1/4 SEC.30 T.4S. R.10W. W.M.

TILLAMOOK COUNTY

1" = 100'

04S10W30AB
PACIFIC CITY



CANCELLED
399
200
201
202
300
301
303
156

04S10W30AB
PACIFIC CITY